

Fluid control valve(2/2 way)

2LA Series (Direct-acting and normally closed)



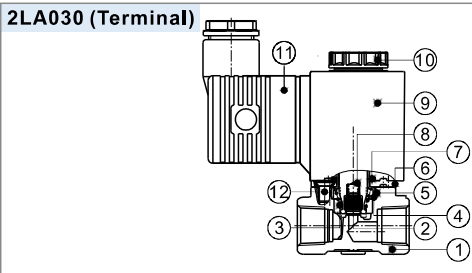
Symbol



Product feature

1. Direct acting and normally closed type 2/2 way solenoid valve. Its high sensibility allows it to change direction quickly;
2. It has wide pressure range, including standard high pressure (H) to choose from;
3. It is compact, small size and light weight. It is easy to install and dismantle.
4. The valve body is made of SUS304 . Its coil has a Heat resistance classification of Class H. The standard seal material is PTFE(Teflon) which is suitable for a variety of working medium such as water with high temperature and vapour.
5. The protection class of the coil is IP65 and there is a choice for grommet or terminal electrical entry .

Inner structure



No.	Item	No.	Item	No.	Item
1	Body	5	O-ring	9	Coil assembly
2	Airtight ring	6	Fixed plate	10	Coil nut
3	Spring	7	O-ring	11	Connector
4	Steel bushing	8	Movable core	12	Screw

Specification

Model\Item	Port size [Note1]	Orifice size (Ømm)	Cv	Valid area or section (mm ²)	Weight [Note2](g)	Max.operating pressure differential		Proof pressure	
						MPa	psi	MPa	psi
2LAH030	-06 1/8"	2.0	0.18	3.0	244.5	2.0	300	3.0	450
	-08 1/4"				234.5				
2LA030	-06 1/8"	3.0	0.33	6.0	244.5	1.0	150		
	-08 1/4"				234.5				
2LAH050	-10 3/8"	4.0	0.55	10.0	529	2.0	300		
	-15 1/2"				509				
2LA050	-10 3/8"	5.0	0.83	15.0	529	1.0	150		
	-15 1/2"				509				

[Note1] PT thread, G thread and NPT thread are available.

[Note2] The weight in the table is the terminal valve's weight, 2LA030 series grommet valve's weight is 10g less than terminal's. 2LA050series grommet valve's weight is 20g less than terminal's.

Specification of coil

Valve type	Coil type	Power type	Frequency (Hz)	Voltage range	Electrical entry	Power Consumption (VA/W)	Insulation	Temp. rise(°C)
2LA□030	CDA110H CLA110H	AC	50	±15%	Terminal (CDA)	10.0VA	Class H	50
			60			8.0VA		45
		DC	-	±10%		6.5W		50
2LA□050	CDA160H CLA160H	AC	50	±15%	Grommet (CLA)	25.0VA	Class H	65
			60			22.0VA		60
		DC	-	±10%		12.0W		50

Valve's specification

Acting		Direct acting			
Initial state		Normally closed			
Adaptable fluid		Steam, High temperature Water, Oil			
Viscosity limit		Under 20CST			
Ambient and fluid temperature (°C)		Oil	Water	Steam	Ambient
	Max.	150	150	183	100
	Min.	-10 [Note1]	1	-	-20

[Note1] 50CST or less.

Ordering code

Ordering code of valves

2LA H 030 08 A □ □



① Model	② Pressure condition	③ Size series	④ Port size	⑤ Voltage	⑥ Electrical entry	⑦ Thread type
2LA: 2/2 way direct-acting and normally closed	H: High pressure Blank: Standard	030: 030 Series	06: 1/8" 08: 1/4"	A: AC220V B: DC24V C: AC110V E: AC24V F: DC12V	Blank: Terminal I: Grommet[Note]	Blank: PT G: G T: NPT
		050: 050 Series	10: 3/8" 15: 1/2"			

[Note] The wire length is 0.5m.

Ordering code of accessories

Ordering code of accessories is the same as 2WA series valve's, Please refer to P169 for details of ordering code.

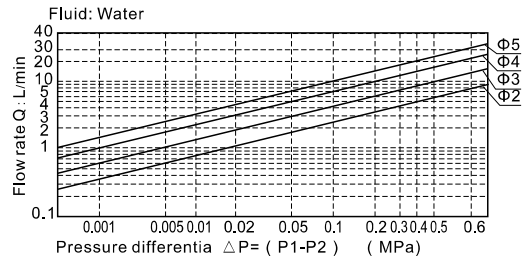
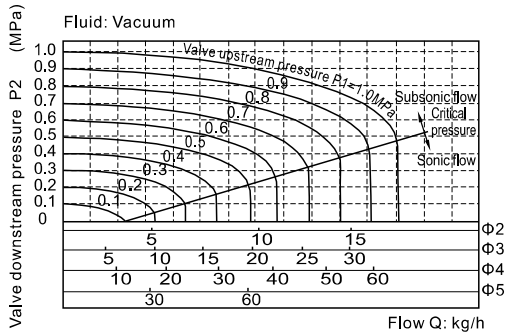


Fluid control valve(2/2 way)

2LA Series (Direct-acting and normally closed)

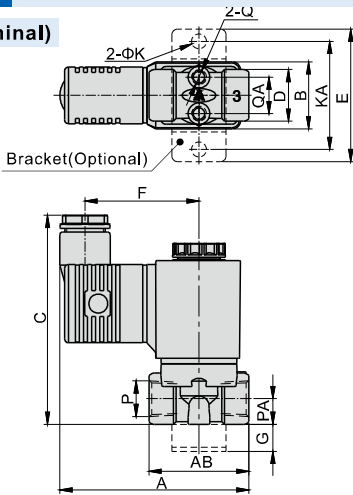


Flow chart

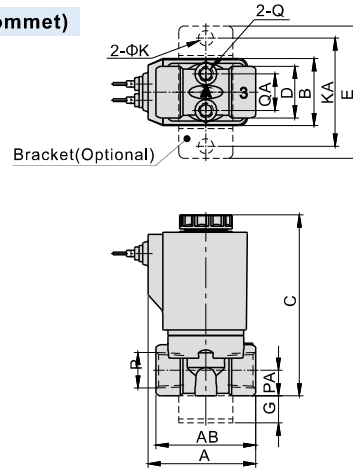


Dimensions

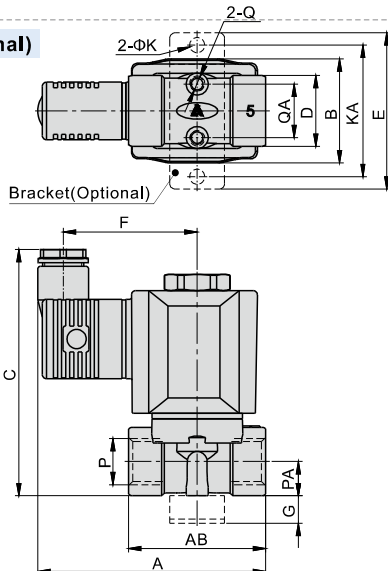
2LA□030(Terminal)



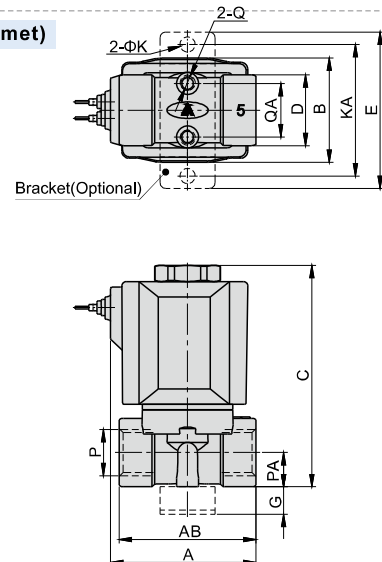
2LA□030(Grommet)



2LA□050(Terminal)



2LA□050(Grommet)



Model/Item	A	AB	B	C	D	E	F	G	K	KA	P	PA	Q	QA
2LA□030-06	70	37	25	77.5	19	49	42	10	5.5	40	1/8"	9.5	M5	13.5
2LA□030-08	70	37	25	77.5	19	49	42	10	5.5	40	1/4"	9.5	M5	13.5
2LA□050-10	83	50	38	90	26	57	49	10	5.5	48	3/8"	12.5	M5	19.5
2LA□050-15	83	50	38	90	26	57	49	10	5.5	48	1/2"	12.5	M5	19.5

Model/Item	A	AB	B	C	D	E	G	K	KA	P	PA	Q	QA
2LA□030-06	40	37	25	67	19	49	10	5.5	40	1/8"	9.5	M5	13.5
2LA□030-08	40	37	25	67	19	49	10	5.5	40	1/4"	9.5	M5	13.5
2LA□050-10	53	50	38	81	26	57	10	5.5	48	3/8"	12.5	M5	19.5
2LA□050-15	53	50	38	81	26	57	10	5.5	48	1/2"	12.5	M5	19.5



Fluid control valve(2/2 way)

2LA Series (Internally piloted and normally closed)



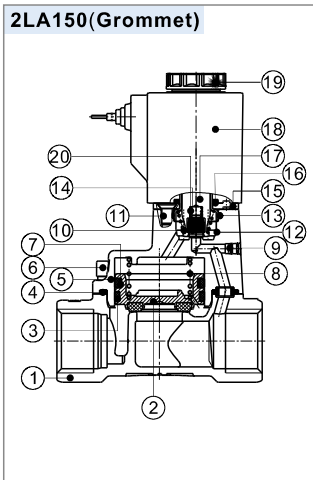
Symbol



Product feature

1. Indirect acting (Internal pilot) and normally closed type 2/2 way solenoid valve. Its high sensibility allows it to change direction quickly.
2. It is compact, small size and light weight. It is easy to install and dismantle.
3. The valve body is made of SUS304. Its coil has a Heat resistance classification of Class H. The standard seal material is PTFE (Teflon) which is suitable for a variety of working medium such as water with high temperature and vapour.
4. The protection class of the coil is IP65 and there is a choice for grommet or terminal electrical entry.

Inner structure



No.	Item
1	Body
2	Piston
3	Wear ring
4	Gasket
5	Cover
6	Screw
7	Spring
8	Spring
9	Plug
10	Spring
11	Screw
12	Steel bushing
13	O-ring
14	Airtight ring
15	Fixed plate
16	O-ring
17	Movable core
18	Coil assembly
19	Coil nut
20	Spring

Specification

Model/Item	Port size [Note1]	Orifice size (Φmm)	Cv	Valid area or section (mm ²)	Weight [Note2](g)	Operating pressure differential		Proof pressure	
						MPa	psi	MPa	psi
2LA150-15	1/2"	15.0	5.50	100.0	570	Max:0.7 Min:0.05	Max:100 Min:10	1.5	220
2LA200-20	3/4"	20.0	9.50	170.0	723				
2LA250-25	1"	25.0	12.50	220.0	1027				
2LA320-32	1 1/4"	35.0	23.00	420.0	2262				
2LA400-40	1 1/2"	40.0	31.00	560.0	2642				
2LA500-50	2"	50.0	49.00	880.0	3509				

[Note1] PT thread, G thread and NPT thread are available.

[Note2] The weight in the table is the terminal valve's weight, 2LA150~250series grommet valve's weight is 10g less than terminal's. 2LA320~500series grommet valve's weight is 20g less than terminal's.

Specification of coil

Valve type	Coil type	Power type	Frequency (Hz)	Voltage range	Electrical entry	Power Consumption (VA/W)	Insulation	Temp. rise(°C)
2LA150 2LA200 2LA250	CDA110H CLA110H	AC	50	± 15%	Terminal (CDA)	10.0VA	Class H	50
			60			8.0VA		45
	DC	—	± 10%	6.5W		50		
2LA320 2LA400 2LA500	CDA160H CLA160H	AC	50	± 15%	Grommet (CLA)	25.0VA		65
			60			22.0VA		60
	DC	—	± 10%	12.0W		50		

Valve's specification

Acting		Internally piloted			
Initial state		Normally closed			
Adaptable fluid		Steam, High temperature Water, Oil			
Viscosity limit		Under 20CST			
Ambient and fluid temperature (°C)		Oil	Water	Steam	Ambient
	Max.	150	150	183	100
	Min.	-10 [Note1]	1	-	-20

[Note1] 50CST or less.

Ordering code

Ordering code of valves

2LA 150 15 A □ □

① ② ③ ④ ⑤ ⑥

① Model	② Orifice size	③ Port size	④ Voltage	⑤ Electrical entry	⑥ Thread type
2LA: 2/2 way internally piloted and normally closed	150: Φ15mm	15: 1/2"	A: AC220V B: DC24V C: AC110V E: AC24V F: DC12V	Blank: Terminal I: Grommet[Note]	Blank: PT G: G T: NPT
	200: Φ20mm	20: 3/4"			
	250: Φ25mm	25: 1"			
	320: Φ35mm	32: 1 1/4"			
	400: Φ40mm	40: 1 1/2"			
	500: Φ50mm	50: 2"			

[Note] The wire length is 0.5m.

Ordering code of accessories

Ordering code of accessories is the same as 2WA series valve's, please refer to P171 for details of ordering code.

[Note] 320\400\500 series valves do not have mounting accessories.

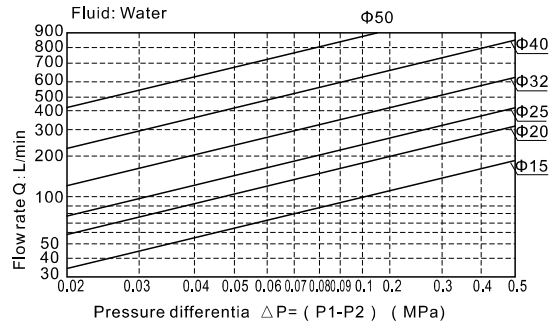
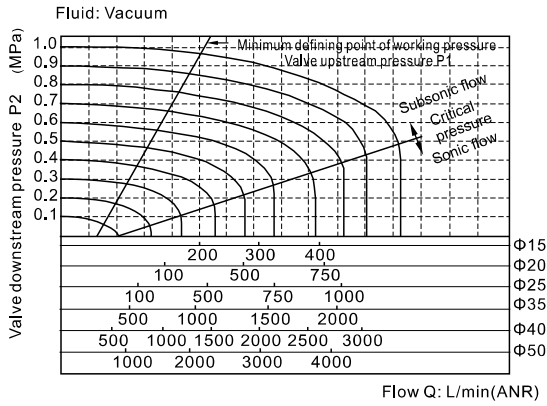


Fluid control valve(2/2 way)

2LA Series (Internally piloted and normally closed)

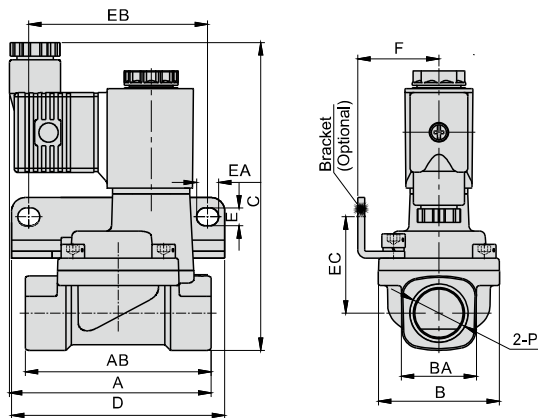


Flow chart

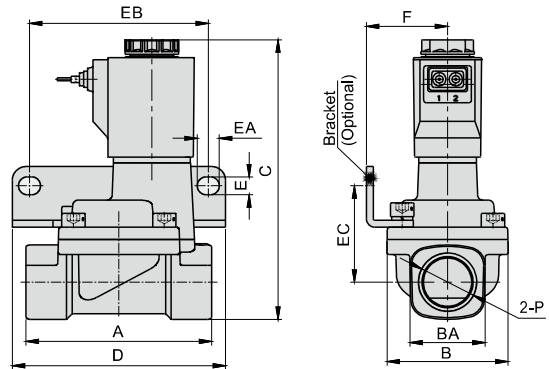


Dimensions

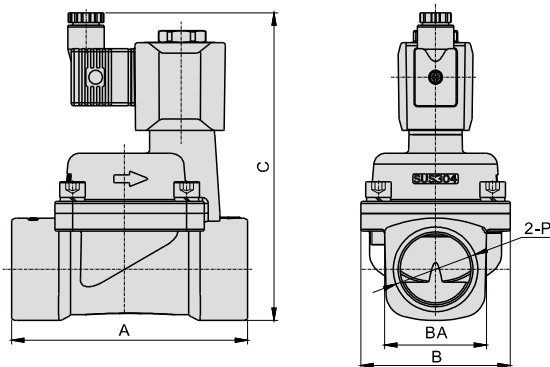
2LA150~250(Terminal)



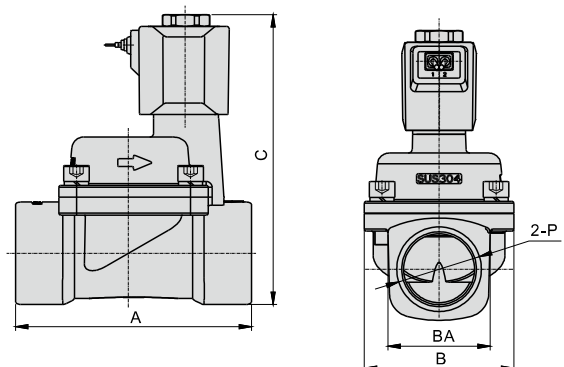
2LA150~250(Grommet)



2LA320~500(Terminal)



2LA320~500(Grommet)



Model\Item	A	AB	B	BA	C	D	E	EA	EB	EC	F	P
2LA150-15	73.5	67.5	44	27.5	112	77.5	6.5	8	65	35	29.5	1/2"
2LA200-20	75.5	79.5	51	33.5	119	87.5	6.5	8	75	38	33	3/4"
2LA250-25	77.5	90	57	40.5	126	93	6.5	8	80	42	35	1"
2LA320-32	120	-	76	52	156	-	-	-	-	-	-	1 1/4"
2LA400-40	126	-	86	58	166	-	-	-	-	-	-	1 1/2"
2LA500-50	144	-	96	70	177	-	-	-	-	-	-	2"

Model\Item	A	B	BA	C	D	E	EA	EB	EC	F	P
2LA150-15	67.5	44	27.5	102	77.5	6.5	8	65	35	29.5	1/2"
2LA200-20	79.5	51	33.5	109	87.5	6.5	8	75	38	33	3/4"
2LA250-25	90	57	40.5	116	93	6.5	8	80	42	35	1"
2LA320-32	120	76	52	147	-	-	-	-	-	-	1 1/4"
2LA400-40	126	86	58	155	-	-	-	-	-	-	1 1/2"
2LA500-50	144	96	70	170	-	-	-	-	-	-	2"



Fluid control valve(2/2 way)

2KLA Series (Direct-acting and normally opened)



Symbol



Product feature

1. Direct acting and normally opened type 2/2 way solenoid valve. Its high sensibility allows it to change direction quickly;
2. It has wide pressure range, including standard high pressure (H) to choose from;
3. It is compact, small size and light weight. It is easy to install and dismantle.
4. The valve body is made of SUS304 . Its coil has a Heat resistance classification of Class H. The standard seal material is PTFE(Teflon) which is suitable for a variety of working medium such as water with high temperature and vapour.
5. The protection class of the coil is IP65 and there is a choice for grommet or terminal electrical entry .

Specification

Model\Item	Port size [Note1]	Orifice size (Φmm)	Cv	Valid area or section (mm ²)	Weight [Note2](g)	Max.operating pressure differentia		Proof pressure	
						MPa	psi	MPa	psi
2KLAH030	-06	1/8"	2.0	0.18	3.0	1.5	220	3.0	450
	-08	1/4"							
2KLA030	-06	1/8"	3.0	0.33	6.0	0.7	100	3.0	450
	-08	1/4"							
2KLAH050	-10	3/8"	4.0	0.55	10.0	1.5	220	3.0	450
	-15	1/2"							
2KLA050	-10	3/8"	5.0	0.83	15.0	0.7	100	3.0	450
	-15	1/2"							

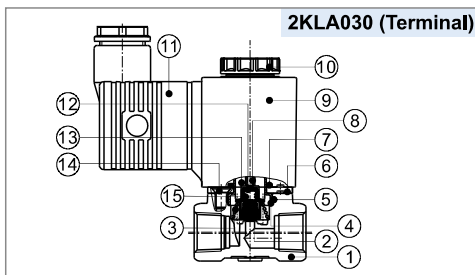
[Note1] PT thread, G thread and NPT thread are available.

[Note2] The weight in the table is the terminal valve's weight, 2KLA030 series grommet valve's weight is 10g less than terminal's. 2KLA050series grommet valve's weight is 20g less than terminal's.

Specification of coil

Valve type	Coil type	Power type	Frequency (Hz)	Voltage range	Electrical entry	Power Consumption (VA/W)	Insulation	Temp. rise(°C)
2KLA□030	CDA110H CLA110H	AC	50	±15%	Terminal (CDA)	10.0VA	Class H	50
			60			8.0VA		45
		DC	-	±10%		7.0W		50
2KLA□050	CDA160H CLA160H	AC	50	±15%	Grommet (CLA)	25.0VA	Class H	65
			60			22.0VA		60
		DC	-	±10%		10.5W		50

Inner structure



No.	Item	No.	Item	No.	Item
1	Body	6	Fixed plate	11	Connector
2	Airtight ring	7	O-ring	12	Airtight bush
3	Spring	8	Mandril	13	Electromagnet
4	Steel bushing	9	Coil assembly	14	Screw
5	O-ring	10	Coil nut	15	Spring

Valve's specification

Acting	Direct acting				
Initial state	Normally opened				
Adaptable fluid	Steam, High temperature Water, Oil				
Viscosity limit	Under 20CST				
Ambient and fluid temperature (°C)		Oil	Water	Steam	Ambient
	Max.	150	150	183	100
	Min.	-10 [Note1]	1	-	-20

[Note1] 50CST or less.

Ordering code

Ordering code of valves

2KLA H 030 08 A □ □



① Model	② Pressure condition	③ Size series	④ Port size	⑤ Voltage	⑥ Electrical entry	⑦ Thread type
2KLA: 2/2 way direct-acting and normally opened	H: High pressure Blank: Standard	030: 030 Series	06: 1/8" 08: 1/4"	A: AC220V B: DC24V C: AC110V E: AC24V F: DC12V	Blank: Terminal I: Grommet[Note]	Blank: PT G: G T: NPT
		050: 050 Series	10: 3/8" 15: 1/2"			

[Note] The wire length is 0.5m.

Ordering code of accessories

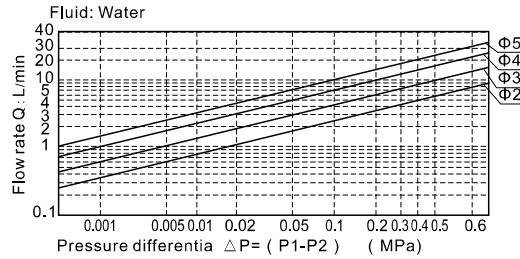
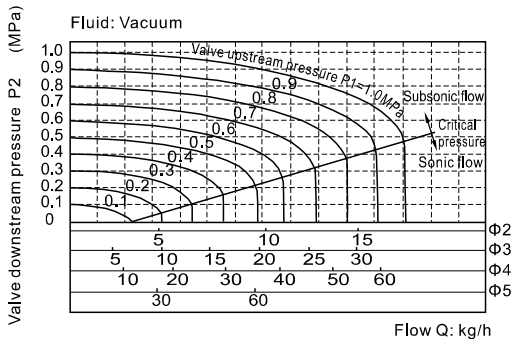
Ordering code of accessories is the same as 2WA series valve's, Please refer to P169 for details of ordering code.

Fluid control valve(2/2 way)

2KLA Series (Direct-acting and normally opened)

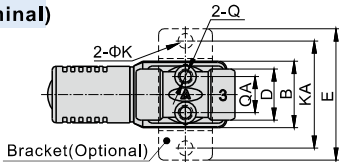


Flow chart

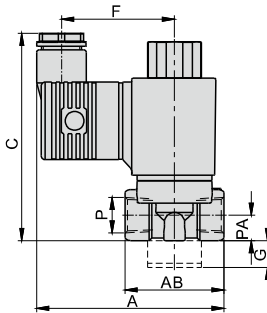


Dimensions

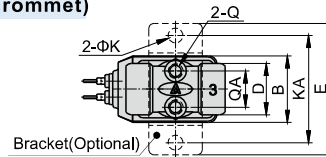
2KLA□030(Terminal)



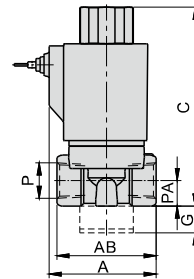
Bracket(Optional)



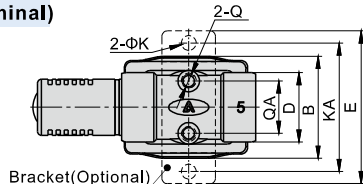
2KLA□030(Grommet)



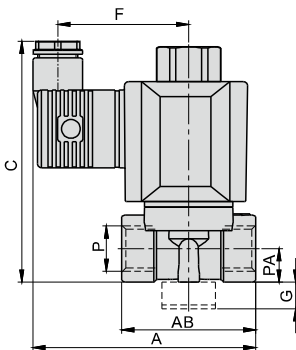
Bracket(Optional)



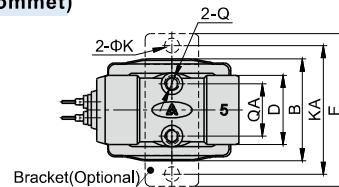
2KLA□050(Terminal)



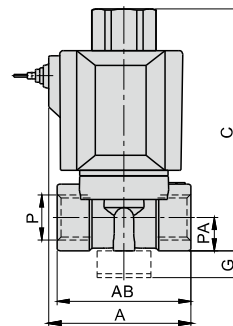
Bracket(Optional)



2KLA□050(Grommet)



Bracket(Optional)



Model\Item	A	AB	B	C	D	E	F	G	K	KA	P	PA	Q	QA
2KLA□030-06	70	37	25	77.5	19	49	42	10	5.5	40	1/8"	9.5	M5	13.5
2KLA□030-08	70	37	25	77.5	19	49	42	10	5.5	40	1/4"	9.5	M5	13.5
2KLA□050-10	83	50	38	90	26	57	49	10	5.5	48	3/8"	12.5	M5	19.5
2KLA□050-15	83	50	38	90	26	57	49	10	5.5	48	1/2"	12.5	M5	19.5

Model\Item	A	AB	B	C	D	E	G	K	KA	P	PA	Q	QA
2KLA□030-06	40	37	25	74	19	49	10	5.5	40	1/8"	9.5	M5	13.5
2KLA□030-08	40	37	25	74	19	49	10	5.5	40	1/4"	9.5	M5	13.5
2KLA□050-10	53	50	38	90	26	57	10	5.5	48	3/8"	12.5	M5	19.5
2KLA□050-15	53	50	38	90	26	57	10	5.5	48	1/2"	12.5	M5	19.5



Fluid control valve(2/2 way)

2KLA Series (Internally piloted and normally opened)



Specification

Model/Item	Port size [Note1]	Orifice size (Φmm)	Cv	Valid area or section (mm ²)	Weight [Note2](g)	Operating pressure differential		Proof pressure	
						MPa	psi	MPa	psi
2KLA150-15	1/2"	15.0	5.50	100.0	569	Max: 0.7 Min: 0.05	Max: 100 Min: 10	1.5	220
2KLA200-20	3/4"	20.0	9.50	170.0	722				
2KLA250-25	1"	25.0	12.50	220.0	1026				
2KLA320-32	1 1/4"	35.0	23.00	420.0	2261				
2KLA400-40	1 1/2"	40.0	31.00	560.0	2641				
2KLA500-50	2"	50.0	49.00	880.0	3508				

[Note1] PT thread, G thread and NPT thread are available.

[Note2] The weight in the table is the terminal valve's weight, 2KLA150~250 series grommet valve's weight is 10g less than terminal's, 2KLA320~500series grommet valve's weight is 20g less than terminal's.

Symbol



Product feature

1. Indirect acting (Internal pilot) and normally opened type 2/2 way solenoid valve. Its high sensibility allows it to change direction quickly.
2. It is compact, small size and light weight. It is easy to install and dismantle.
3. The valve body is made of SUS304. Its coil has a Heat resistance classification of Class H. The standard seal material is PTFE (Teflon) which is suitable for a variety of working medium such as water with high temperature and vapour.
4. The protection class of the coil is IP65 and there is a choice for grommet or terminal electrical entry.

Specification of coil

Valve type	Coil type	Power type	Frequency (Hz)	Voltage range	Electrical entry	Power Consumption (VA/W)	Insulation	Temp. rise(°C)	
2KLA150 2KLA200 2KLA250	CDA110H CLA110H	AC	50	±15%	Terminal (CDA)	10.0VA	Class H	50	
			60			8.0VA		45	
2KLA320 2KLA400 2KLA500	CDA160H CLA160H	AC	50	±15%		Grommet (CLA)		6.5W	50
			60					25.0VA	65
		DC	-	±10%	22.0VA	60			
					12.0W	50			

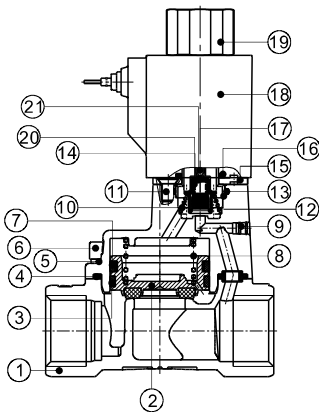
Valve's specification

Acting	Internally piloted				
	Initial state	Normally opened			
Adaptable fluid	Steam, High temperature Water, Oil				
Viscosity limit	Under 20CST				
Ambient and fluid temperature (°C)		Oil	Water	Steam	Ambient
	Max.	150	150	183	100
	Min.	-10 [Note1]	1	-	-20

[Note1] 50CST or less.

Inner structure

2KLA150(Grommet)



No.	Item	No.	Item
1	Body	12	Steel bushing
2	Position	13	O-ring
3	Wear ring	14	Airtight ring
4	Gasket	15	Fixed plate
5	Cover	16	O-ring
6	Screw	17	Mandril
7	Spring	18	Coil assembly
8	Spring	19	Coil nut
9	Plug	20	Spring
10	Spring	21	Airtight bush
11	Screw		

Ordering code

Ordering code of valves

① Model	② Orifice size	③ Port size	④ Voltage	⑤ Electrical entry	⑥ Thread type
2KLA: 2/2 way internally piloted and normally opened	150: Φ15mm	15: 1/2"	A: AC220V B: DC24V C: AC110V E: AC24V F: DC12V	Blank: Terminal I: Grommet [Note]	Blank: PT G: G T: NPT
	200: Φ20mm	20: 3/4"			
	250: Φ25mm	25: 1"			
	320: Φ35mm	32: 1 1/4"			
	400: Φ40mm	40: 1 1/2"			
500: Φ50mm	50: 2"				

[Note] The wire length is 0.5m.

Ordering code of accessories

Ordering code of accessories is the same as 2WA series valve's.

Please refer to P171 for details of ordering code.

[Note] 320\400\500 series valves do not have mounting accessories.

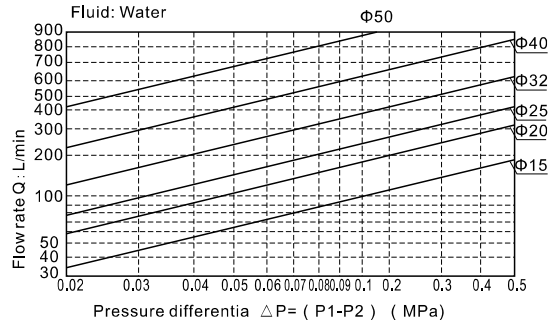
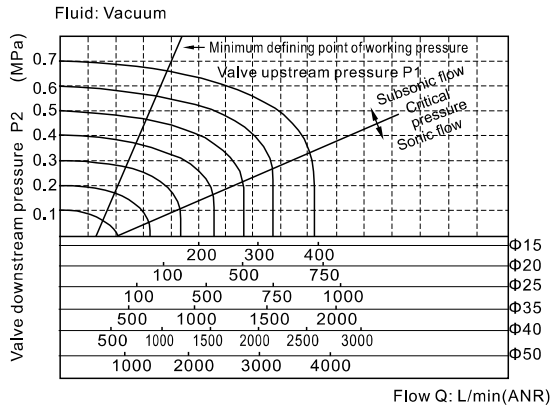


Fluid control valve(2/2 way)

2KLA Series (Internally piloted and normally opened)

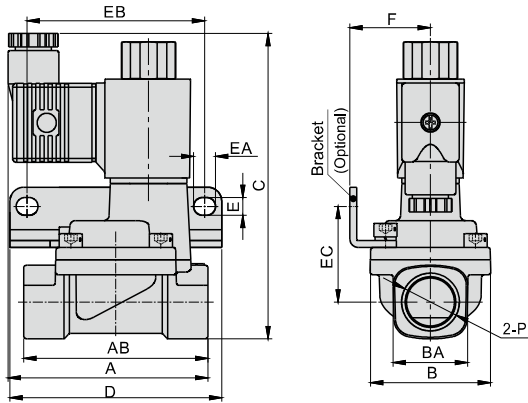


Flow chart

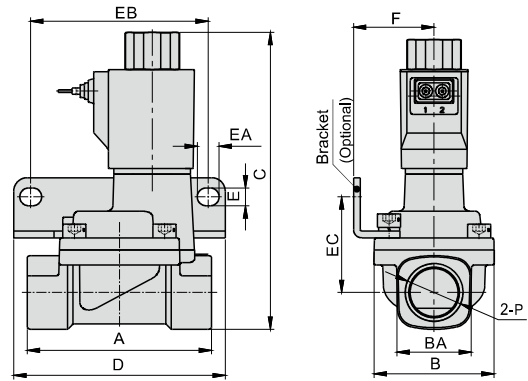


Dimensions

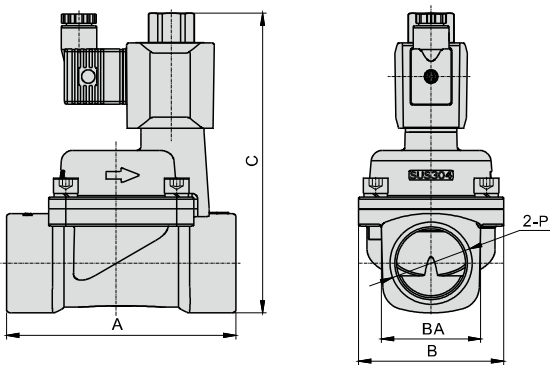
2KLA150~250(Terminal)



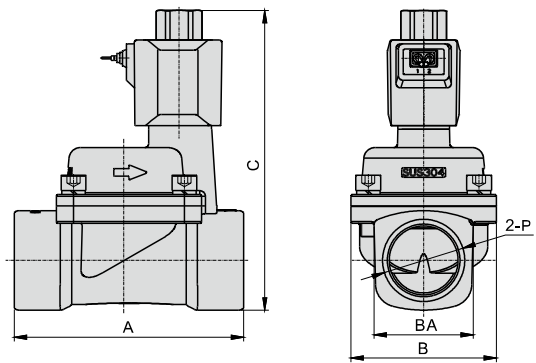
2KLA150~250(Grommet)



2KLA320~500(Terminal)



2KLA320~500(Grommet)



Model/Item	A	AB	B	BA	C	D	E	EA	EB	EC	F	P
2KLA150-15	73.5	67.5	44	27.5	112	77.5	6.5	8	65	35	29.5	1/2"
2KLA200-20	75.5	79.5	51	33.5	119	87.5	6.5	8	75	38	33	3/4"
2KLA250-25	77.5	90	57	40.5	126	93	6.5	8	80	42	35	1"
2KLA320-32	120	-	76	52	165.5	-	-	-	-	-	-	1 1/4"
2KLA400-40	126	-	86	58	175.5	-	-	-	-	-	-	1 1/2"
2KLA500-50	144	-	96	70	186.5	-	-	-	-	-	-	2"

Model/Item	A	B	BA	C	D	E	EA	EB	EC	F	P
2KLA150-15	67.5	44	27.5	102	77.5	6.5	8	65	35	29.5	1/2"
2KLA200-20	79.5	51	33.5	109	87.5	6.5	8	75	38	33	3/4"
2KLA250-25	90	57	40.5	116	93	6.5	8	80	42	35	1"
2KLA320-32	120	76	52	156.5	-	-	-	-	-	-	1 1/4"
2KLA400-40	126	86	58	164.5	-	-	-	-	-	-	1 1/2"
2KLA500-50	144	96	70	179.5	-	-	-	-	-	-	2"

