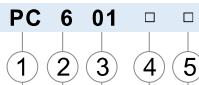


Accessories—One-Touch Fittings

PC, POC series

Ordering code



① Model	② Port size	③ Thread connection		④ Standard color		⑤ Thread type
PC: Male connector 	4 : Φ4mm 6 : Φ6mm 8 : Φ8mm 10 : Φ10mm 12 : Φ124mm	Thread connection M5 : M5X0,8	Adaptable port size Φ4, Φ6	Standard color Blank: Gray	Specification Release button: Gray	Blank: PT
POC: Male connector 		01 : 1/8" 02 : 1/4" 03 : 3/8" 04 : 1/2"	Φ4, Φ6 Φ8, Φ10 Φ12	D: Black	Release button: Black	

Specification

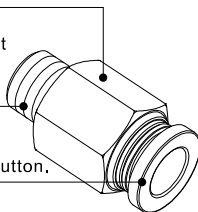
Operating pressure range	0~10kgf/cm ² (0~1.0MPa)
Negative pressure	-750mmHg(10Torr)
Proof pressure	1.5MPa
Ambient and fluid temperature (°C)	-20~70
Applicable tubing	Soft nylon or polyurethane
Color	Grey/black

Table for interface port and tube O.D.

Product series	Thread type	Port size				
		Φ4	Φ6	Φ8	Φ10	Φ12
PC	M5	•	•			
	1/8"	•	•	•	•	•
	1/4"	•	•	•	•	•
	3/8"		•	•	•	•
	1/2"		•	•	•	•
POC	M5	•	•			
	1/8"	•	•	•	•	
	1/4"	•	•	•	•	•
	3/8"		•	•	•	•
	1/2"				•	•

Product feature

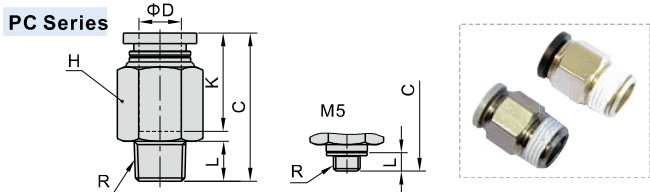
- The compact appearance space saving.
- The threaded portion is covered with sealant and the M5 thread is attached with a sealing gasket to prevent air leakage over the connection thread portion.
- Grey and black are optional for the release button.



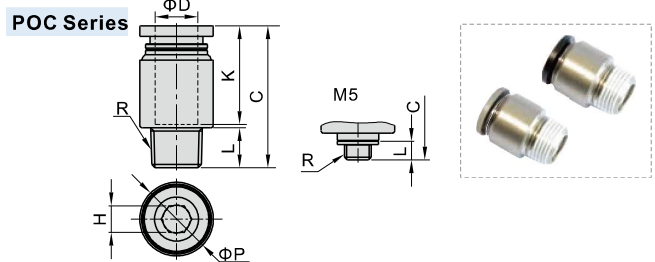
Inner structure

PC Series		No.	Item	Material
	①	1	Release button	POM
	②	2	Guide	Aluminum alloy
	③	3	Spring gasket	Stainless steel
	④	4	Chuck	POM
	⑤	5	O-ring	NBR
	⑥	6	Body	Brass

Dimensions



Model\Item	ΦD	R	L	C	K	H(Across flat)	Weight(g)
PC4M5	4	M5×0,8	3,5	19,5	14	9	6,5
PC401		1/8"	7,5	19,5	14	10	7
PC402		1/4"	10	19,5	14	14	13,5
PC6M5	6	M5×0,8	3,5	22,5	16,5	12	8,5
PC601		1/8"	7,5	22,0	18,5	12	7,5
PC602		1/4"	10	24,5	18,5	14	15,5
PC603	3/8"	11	22,5	18,5	17	24	
PC604	1/2"	14	26,0	18,5	21	46	
PC801	8	1/8"	7,5	28	18,5	14	13,5
PC802		1/4"	10	27	18,5	14	13
PC803		3/8"	11	23,5	18,5	17	21
PC804	1/2"	14	27	18,5	21	43,5	
PC1001	10	1/8"	7,5	30	21	17	20,5
PC1002		1/4"	10	32,5	21	17	24
PC1003		3/8"	11	28	21	17	20,5
PC1004	1/2"	14	26,5	21	21	36	
PC1201	12	1/8"	7,5	32,5	23	21	38,5
PC1202		1/4"	10	35	23	21	40,5
PC1203		3/8"	11	30,5	23	21	28,5
PC1204		1/2"	14	32,5	23	21	41,5



Model\Item	ΦD	R	ΦP	L	C	K	H(Across flat)	Weight(g)
POC4M5	4	M5×0,8	9	3,5	18,5	14	2,5	3,6
POC401		1/8"	10	7,5	18	14	3	5,5
POC402		1/4"	14	10	19,5	14	3	12,6
POC6M5	6	M5×0,8	12	3,5	21,5	16,5	2	5,9
POC601		1/8"	12	7,5	22,0	18,5	4	6,3
POC602		1/4"	14	10	22,0	18,5	4	11,8
POC801	8	1/8"	14	7,5	26,5	18	5	9,9
POC802		1/4"	14	10	25	18	6	10,1
POC803		3/8"	17	11	23,5	18	6	19,3
POC1001	10	1/8"	17	7,5	30	21	5	16,5
POC1002		1/4"	17	10	29	21	6	15,4
POC1003		3/8"	17	11	28	21	8	18,7
POC1004	1/2"	21	14	26,5	21	8	35,3	
POC1202	12	1/4"	21	10	34,5	23	6	32,3
POC1203		3/8"	21	11	30	23	8	25,1
POC1204		1/2"	21	14	32	23	8	37,5



Accessories—One-Touch Fittings

PC, PL mini series

Ordering code

PC 6 01 □ □ - M

① ② ③ ④ ⑤ ⑥

① Model	② Port size	③ Thread connection	④ Standard color	⑤ Thread type	⑥ Style type
PC: Male connector 	3.2 : Φ3.2mm 4 : Φ4mm 6 : Φ6mm	Thread connection	Adaptable port size	Standard color	Specification
PL: Male elbow 		M3 : M3X0.5	Φ3.2, Φ4	Blank: Gray	Release button: Gray
		M5 : M5X0.8	Φ3.2, Φ4, Φ6	D: Black	Release button: Black
		01 : 1/8"	Φ4, Φ6		
				Blank: PT	M : Mini type

Specification

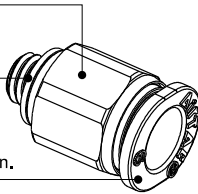
Operating pressure range	0~10kgf/cm²(0~1.0MPa)
Negative pressure	-750mmHg(10Torr)
Proof pressure	1.5MPa
Ambient and fluid temperature (°C)	-20~70
Applicable tubing	Soft nylon or polyurethane
Color	Grey/black

Table for interface port and tube O.D.

Product series	Thread type	Port size		
		Φ3.2	Φ4	Φ6
PC/PL	M3	•	•	
	M5	•	•	•
	1/8"		•	•

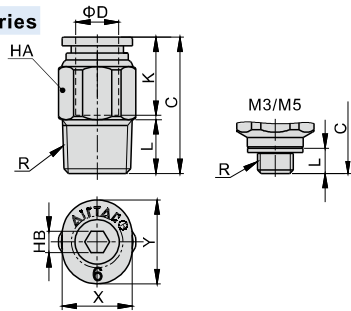
Product feature

- The compact appearance space saving.
- The threaded portion is covered with sealant and the M3/M5 thread is attached with a sealing gasket to prevent air leakage over the connection thread portion.
- Grey and black are optional for the release button.



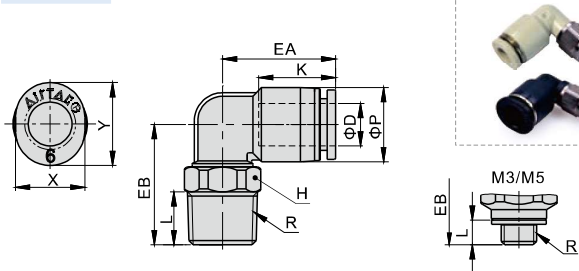
Dimensions

PC Series



Model/Item	ΦD	R	L	C	K	X	Y	HA	HB	Weight(g)
PC3.2M3-M	3.2	M3×0.5	3	16	11.5	6.8	8.7	7	1.5	1.7
PC3.2M5-M		M5×0.8	3.5	16	11.5	6.8	8.7	7	2	2.0
PC4M3-M	4	M3×0.5	3	17.5	12.5	7.8	9.5	8	1.5	2.4
PC4M5-M		M5×0.8	3.5	17	12.5	7.8	9.5	8	2	2.7
PC401-M	6	1/8"	7.5	17.5	13.5	7.8	9.5	10	3	5.5
PC6M5-M		M5X0.8	3.5	18.5	13.5	9.8	11.7	10	2	3.6
PC601-M		1/8"	7.5	19.0	15.5	9.8	11.7	10	4	6.0

PL Series



Model/Item	ΦD	R	ΦP	L	K	EA	EB	H	X	Y	Weight(g)
PL3.2M3-M	3.2	M3×0.5	7.5	3	12	14.5	14	7	6.8	8.7	2.4
PL3.2M5-M		M5×0.8	3.5	12	14.5	7	6.8	8.7	2.7		
PL4M3-M	4	M3×0.5	3	12.5	14	7	7.8	9.5	3.0		
PL4M5-M		M5×0.8	3.5	12.5	15	14.5	7	7.8	9.5	3.3	
PL401-M	6	1/8"	7.5	12.5	16	10	7.8	9.5	6.2		
PL6M5-M		M5X0.8	3.5	13.5	16.0	15.5	7	9.8	11.7	4.0	
PL601-M		1/8"	7.5	13.5	16.5	10	9.8	11.7	6.8		

Accessories—One-Touch Fittings

One-touch fittings—threaded type

Ordering code

Same diameter type fittings		PL 6 01 □ □				
		1	2	3	4	5
① Model	② Port size	③ Thread connection		④ Standard color		⑤ Thread type
PHW: Double universal male elbow 	PL: Male elbow 	4: Φ4mm 6: Φ6mm 8: Φ8mm 10: Φ10mm 12: Φ12mm	Thread connection · Adaptable port size		Blank: Gray	Specification Release button: Gray Adaptable model PCF PMF
PHF: Universal female elbow 	PLL: Extended male elbow 		M5: M5X0.8 Φ4, Φ6			
PEB: Male branch tee 	PLF: Female elbow 				D: Black	Release button: Gray Body: Gray Others
PED: Male run tee 	PCF: Female connector 		01: 1/8" 02: 1/4" 03: 3/8" 04: 1/2"			
PYB: Branch "Y" 	PMF: Bulkhead connector 				Release button: Black Body: Black Others	
PZB: Threaded cross 	PH: Universal male elbow 					

Different diameter type fittings		PKD 6 - 4 01 □ □					
		1	2	3	4	5	6
① Model	② Port size	③ Port size	④ Thread connection		⑤ Standard color		⑥ Thread type
PKD: Male reducer triple branch 	6: Φ6mm 8: Φ8mm 10: Φ10mm	4: Φ4mm 6: Φ6mm 8: Φ8mm	01: 1/8" 02: 1/4" 03: 3/8"		Standard color: Specification Blank: Gray Release button: Gray/Body: Gray D: Black Release button: Black/Body: Black		Blank: PT

Specification

Operating pressure range	0~10kgf/cm ² (0~1.0MPa)
Negative pressure	-750mmHg(10Torr)
Proof pressure	1.5MPa
Ambient and fluid temperature (°C)	-20~70
Applicable tubing	Soft nylon or polyurethane
Color	Grey/black

Product feature

- Variable models can be widely used in every kind of pneumatic systems.
- High circulation performance: bear the same flow with the volume of the tubing inside diameter.
- Connect tubing easily and conveniently. The tubing connection portion is safe and durable.
- The threaded portion is covered with sealant and the M5 thread is attached with a sealing gasket to prevent air leakage over the connection thread portion.
- The nickel plated body is anti-corrosion and anti-pollution, which allows a broader application.

Inner structure

No.	Item	Material
1	Release button	POM
2	Guide	Aluminum alloy
3	Spring gasket	Stainless steel
4	Chuck	POM
5	O-ring	NBR
6	Body	PBT
7	O-ring	NBR
8	Stud	Brass

Table for interface port and tube O.D.

Product series	Thread type	Port size				
		Φ4	Φ6	Φ8	Φ10	Φ12
PL	M5	•	•			
	1/8"	•	•	•	•	•
	1/4"	•	•	•	•	•
	3/8"		•	•	•	•
	1/2"		•	•	•	•
PLL	M5	•	•			
	1/8"	•	•	•	•	
	1/4"	•	•	•	•	•
	3/8"		•	•	•	•
	1/2"			•	•	•
PEB PED PYB	M5	•	•			
	1/8"	•	•	•	•	
	1/4"	•	•	•	•	•
	3/8"		•	•	•	•
PH PHF	M5	•	•			
	1/8"	•	•	•		
	1/4"		•	•	•	
	3/8"		•	•	•	•
PHW	M5	•	•			
	1/8"	•	•	•	•	
	1/4"		•	•	•	•
	3/8"		•	•	•	•
PZB	M5	•	•			
	1/8"	•	•	•		
	1/4"		•	•	•	
	3/8"		•	•	•	•

Product series	Thread type	Port size		
		Φ6-Φ4	Φ8-Φ6	Φ10-Φ8
PKD	1/8"	•		
	1/4"		•	
	3/8"			•



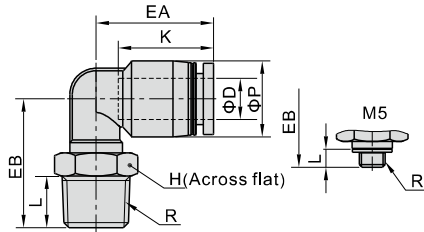
Accessories—One-Touch Fittings



One-touch fittings—threaded type

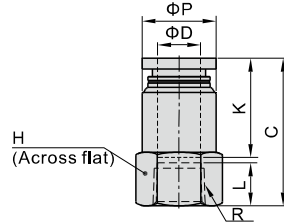
Dimensions

PL Series



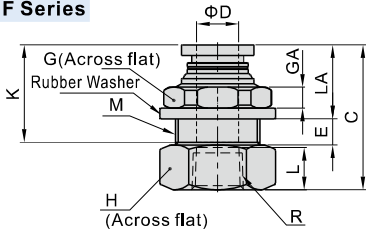
Model\Item	ΦD	R	ΦP	L	K	EA	EB	H	Weight(g)
PL4M5	4	M5×0.8	9	3.5	14	17	15	8	3
PL401		1/8"	9	7.5	14	17	18.5	10	4.5
PL402		1/4"	9	10	14	17	22.0	14	12
PL6M5	6	M5×0.8	12.5	3.5	17	20	17.0	8	4.5
PL601		1/8"	12.5	7.5	17	20	20.5	10	6
PL602		1/4"	12.5	10	17	20	24.0	14	13.5
PL603	6	3/8"	12.5	11	17	20	25.5	17	20.5
PL604		1/2"	12.5	14	17	20	30.0	21	36
PL801		1/8"	15	7.5	18.5	23	20.5	10	7.5
PL802	8	1/4"	15	10	18.5	23	25.0	14	13
PL803		3/8"	15	11	18.5	23	26.5	17	21
PL804		1/2"	15	14	18.5	23	31.0	21	36
PL1001	10	1/8"	18	7.5	21	25.5	25.0	17	16.5
PL1002		1/4"	18	10	21	25.5	27.0	17	19
PL1003		3/8"	18	11	21	25.5	28.0	17	21
PL1004	10	1/2"	18	14	21	25.5	32.5	21	37
PL1201		1/8"	21	7.5	23	28.5	26.5	17	19
PL1202		1/4"	21	10	23	28.5	28.5	17	21.5
PL1203	12	3/8"	21	11	23	29.5	33	17	25.5
PL1204		1/2"	21	14	23	29.5	34	21	37

PCF Series



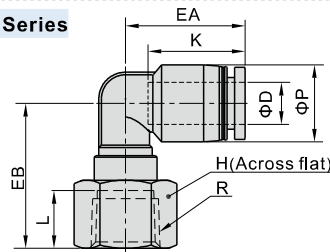
Model\Item	ΦD	R	ΦP	L	C	K	H	Weight(g)
PCF4M5	4	M5×0.8	9	5	21	14	10	2.7
PCF401		1/8"	9.5	8	23	14	14	4.5
PCF402		1/4"	9.5	11	26	14	17	6.5
PCF6M5	6	M5×0.8	12	5	21.5	16.5	12	3.9
PCF601		1/8"	12.5	8	25.5	16.5	14	5.6
PCF602		1/4"	12.5	11	28.5	16.5	17	7.5
PCF603	6	3/8"	13	12	29.5	16.5	21	10.7
PCF604		1/2"	13	13.5	31.0	16.5	25	13.8
PCF801		1/8"	14	8	27.5	18.5	14	5.8
PCF802	8	1/4"	14.5	11	30.5	18.5	17	8.4
PCF803		3/8"	14.5	12	31.5	18.5	21	11.2
PCF804		1/2"	14.5	13.5	33	18.5	25	14.4
PCF1001	10	1/8"	17	8	29	21	17	9.5
PCF1002		1/4"	17	11	33	21	17	9.9
PCF1003		3/8"	18	12	34	21	21	14
PCF1004	10	1/2"	18	13.5	35.5	21	25	17.1
PCF1202		1/4"	21	11	33.5	23	21	17.5
PCF1203		3/8"	21	12	35.5	23	21	16.6
PCF1204	12	1/2"	21	13.5	37	23	25	19.7

PMF Series



Model\Item	ΦD	R	M	L	C	K	LA	E	GA	G	H	Weight(g)
PMF401	4	1/8"	M12X1	8	25	14	12	4	4	14	14	6.4
PMF402		1/4"	M12X1	11	29	14	12	4	4	14	17	9
PMF601		1/8"	M14X1	8	25.5	16.5	12.5	5	4	17	17	9.1
PMF602	6	1/4"	M14X1	11	30.5	16.5	12.5	5	4	17	17	10.9
PMF603		3/8"	M14X1	12	31.5	16.5	12.5	5	4	17	21	13.2
PMF801		1/8"	M16X1	8	27.5	18.5	13.5	5.5	4	19	19	12.8
PMF802	8	1/4"	M16X1	11	32	18.5	13.5	5.5	4	19	19	15.7
PMF803		3/8"	M16X1	12	33	18.5	13.5	5.5	4	19	21	15
PMF804		1/2"	M16X1	13.5	34.5	18.5	13.5	5.5	4	19	25	18.1
PMF1001	10	1/8"	M20X1	8	30	21	14.5	7.5	5	24	22	19.6
PMF1002		1/4"	M20X1	11	35	21	14.5	7.5	5	24	22	22.8
PMF1003		3/8"	M20X1	12	36	21	14.5	7.5	5	24	22	21.1
PMF1004	10	1/2"	M20X1	13.5	37.5	21	14.5	7.5	5	24	25	23.2
PMF1202		1/4"	M22X1	11	34.5	23	15.5	8	6	27	24	26.2
PMF1203		12	3/8"	M22X1	12	37.5	23	15.5	8	6	27	24
PMF1204	1/2"		M22X1	13.5	39	23	15.5	8	6	27	25	26.2

PLF Series



Model\Item	ΦD	R	ΦP	L	K	EA	EB	H	Weight(g)
PLF4M5	4	M5×0.8	9	5	14	17	16	10	2.9
PLF401		1/8"	9	8	14	17	21	14	4.6
PLF402		1/4"	9	11	14	17	24	17	6.8
PLF6M5	6	M5×0.8	12.5	5	17	20	18.5	10	7
PLF601		1/8"	12.5	8	17	20	23	14	5.8
PLF602		1/4"	12.5	11	17	20	26	17	8
PLF603	6	3/8"	12.5	12	17	20	27	21	10.7
PLF801		1/8"	15	8	18.5	23	20	14	6.6
PLF802		8	1/4"	15	11	18.5	23	27.5	17
PLF803	3/8"		15	12	18.5	23	28.5	21	11.9
PLF804	1/2"		15	13.5	18.5	23	30	25	15.2
PLF1001	10	1/8"	18	8	21	25.5	24	17	11.3
PLF1002		1/4"	18	11	21	25.5	26.5	17	11.2
PLF1003		3/8"	18	12	21	25.5	30	21	14.5
PLF1004	10	1/2"	18	13.5	21	25.5	31.5	25	17.4
PLF1202		1/4"	21	11	23	28.5	28.5	17	13.7
PLF1203		12	3/8"	21	12	23	29.5	32	21
PLF1204	1/2"		21	13.5	23	29.5	33	25	20.4

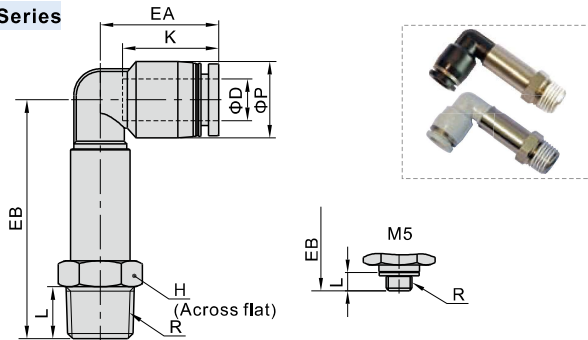


Accessories—One-Touch Fittings



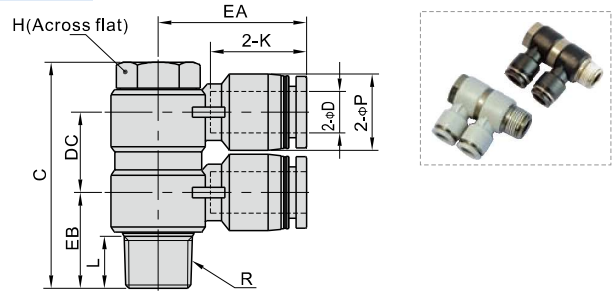
One-touch fittings—threaded type

PLL Series



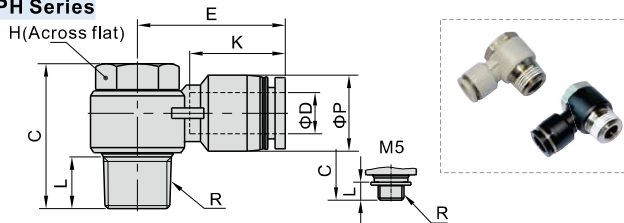
Model\Item	ΦD	R	ΦP	L	K	EA	EB	H	Weight(g)
PLL4M5	4	M5×0.8	9	3.5	14	17	32.5	8	8.9
PLL401	4	1/8"	9	7.5	14	17	35.5	10	12.3
PLL402	4	1/4"	9	10	14	17	38.5	14	16.9
PLL6M5	6	M5×0.8	12.5	3.5	17	20	34.5	8	9.9
PLL601	6	1/8"	12.5	7.5	17	20	37.5	10	13
PLL602	6	1/4"	12.5	10	17	20	40.5	14	18
PLL603	6	3/8"	12.5	11	17	20	43	17	23.4
PLL801	8	1/8"	15	7.5	18.5	23	43.5	12	16.6
PLL802	8	1/4"	15	10	18.5	23	45.5	14	22.7
PLL803	8	3/8"	15	11	18.5	23	48	17	27.7
PLL1001	10	1/8"	18	7.5	21	25.5	50.5	15	37.5
PLL1002	10	1/4"	18	10	21	25.5	53.5	15	40.6
PLL1003	10	3/8"	18	11	21	25.5	54.5	17	40.7
PLL1004	10	1/2"	18	14	21	25.5	59	21	47.4
PLL1202	12	1/4"	21	10	23	28.5	55.5	15	43
PLL1203	12	3/8"	21	11	23	29.5	60	17	55.4
PLL1204	12	1/2"	21	14	23	29.5	63	21	56.7

PHW Series



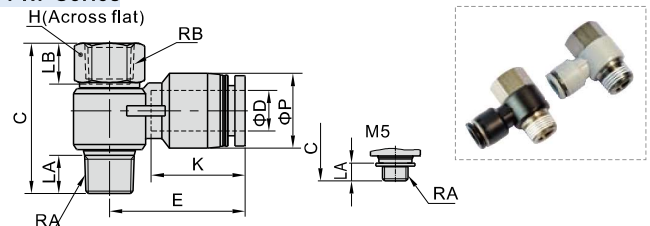
Model\Item	ΦD	R	ΦP	L	C	K	EA	EB	DC	H	Weight(g)
PHW401	4	1/8"	9	7.5	38	14	20.5	14.5	13	11	19
PHW601	6	1/8"	12.5	7.5	38	16.5	23.0	15	13	11	21
PHW602	6	1/4"	12.5	10	43.5	16.5	25.0	17.5	15.5	14	40.2
PHW603	6	3/8"	12.5	11	50	16.5	27.0	20	16.5	19	69.2
PHW801	8	1/8"	15	7.5	40.5	18.5	26.5	16.5	15.5	11	23.6
PHW802	8	1/4"	15	10	43.5	18.5	28.5	18.5	15.5	14	40.8
PHW803	8	3/8"	15	11	50	18.5	29.5	20	16.5	19	70.4
PHW804	8	1/2"	15	14	61	18.5	32	24.5	22	24	134.8
PHW1002	10	1/4"	18	10	46.5	21	31	20	18.5	14	47
PHW1003	10	3/8"	18	11	55	21	33	21	22	19	87.5
PHW1004	10	1/2"	18	14	61	21	35.5	25	22	24	137.7
PHW1203	12	3/8"	21	11	55	23	36	23	22	19	86.4
PHW1204	12	1/2"	21	14	61	23	38	26.5	22	24	147.5

PH Series



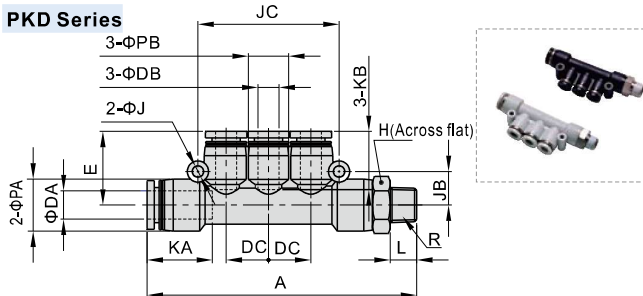
Model\Item	ΦD	R	ΦP	L	C	K	E	H	Weight(g)
PH4M5	4	M5×0.8	9	3.5	17	14	19	8	5.8
PH401	4	1/8"	9	7.5	25	14	20.5	11	12.8
PH6M5	6	M5×0.8	12.5	3.5	17	16.5	23.5	8	6.8
PH601	6	1/8"	12.5	7.5	25	16.5	23	11	14
PH602	6	1/4"	12.5	10	28	16.5	25	14	25.4
PH603	6	3/8"	12.5	11	33	16.5	27	19	50.2
PH801	8	1/8"	15	7.5	25	18.5	26.5	11	14.7
PH802	8	1/4"	15	10	28	18.5	28.5	14	26.4
PH803	8	3/8"	15	11	33	18.5	29.5	19	49.4
PH804	8	1/2"	15	14	39	18.5	32	24	89
PH1002	10	1/4"	18	10	28	21	31	14	27.7
PH1003	10	3/8"	18	11	33	21	33	19	51.1
PH1004	10	1/2"	18	14	39	21	35.5	24	88.5
PH1203	12	3/8"	21	11	33	23	36	19	53
PH1204	12	1/2"	21	14	39	23	38	24	92.8

PHF Series



Model\Item	ΦD	RA	RB	ΦP	LA	LB	C	K	E	H	Weight(g)
PHF4M5	4	M5×0.8	M5×0.8	9	3.5	6	20	14	19	8	6.2
PHF401	4	1/8"	1/8"	9	7.5	8	29.5	14	20.5	12	12.9
PHF6M5	6	M5×0.8	M5×0.8	12.5	3.5	6	20	16.5	23.5	8	7.1
PHF601	6	1/8"	1/8"	12.5	7.5	8	29.5	16.5	23	12	13.9
PHF602	6	1/4"	1/4"	12.5	10	11	35	16.5	25	17	30.3
PHF603	6	3/8"	3/8"	12.5	11	12	40	16.5	27	19	44.2
PHF801	8	1/8"	1/8"	15	7.5	8	29.5	18.5	26.5	12	15
PHF802	8	1/4"	1/4"	15	10	11	35	18.5	28.5	17	30.7
PHF803	8	3/8"	3/8"	15	11	12	40	18.5	29.5	19	44.8
PHF804	8	1/2"	1/2"	15	14	13.5	47.5	18.5	32	24	84.7
PHF1002	10	1/4"	1/4"	18	10	11	35	21	31	17	32
PHF1003	10	3/8"	3/8"	18	11	12	40	21	33	19	46.2
PHF1004	10	1/2"	1/2"	18	14	13.5	47.5	21	35.5	24	86.1
PHF1203	12	3/8"	3/8"	21	11	12	40	23	36	19	48.4
PHF1204	12	1/2"	1/2"	21	14	13.5	47.5	23	38	24	89.7

PKD Series



Model\Item	ΦDA	ΦDB	R	L	A	ΦPA	ΦPB	KA
PKD6-401	6	4	1/8"	7.5	66.5	12.5	9	16.5
PKD8-602	8	6	1/4"	10	79	15	12.5	18.5
PKD10-803	10	8	3/8"	11	91.5	18	15	21

Model\Item	KB	ΦJ	JB	JC	DC	E	H	Weight(g)
PKD6-401	14	3.2	8	34	10	17.5	12	15.8
PKD8-602	16.5	3.2	9.5	40	12	21	14	26.5
PKD10-803	18.5	4.3	11	48	14.5	24	17	38.2

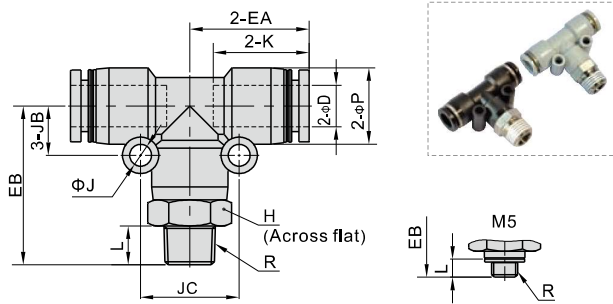


Accessories—One-Touch Fittings



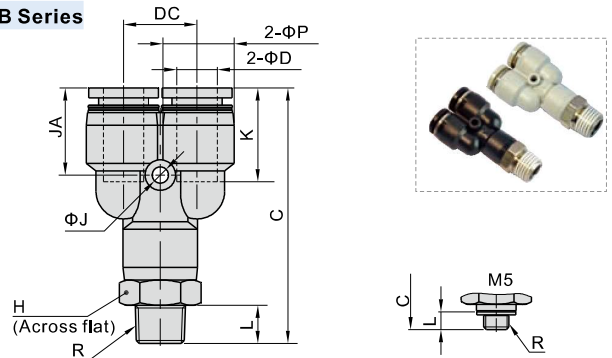
One-touch fittings—threaded type

PEB Series



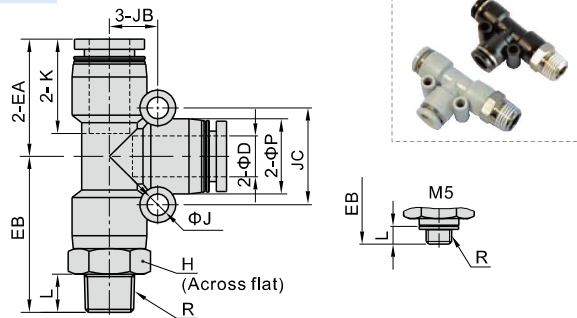
Model\Item	ΦD	R	ΦP	L	K	EA	EB	ΦJ	JB	JC	H	Weight(g)
PEB4M5	4	M5×0.8	9	3.5	14	17	21	3.2	6.5	13	9	6.8
PEB401		1/8"	9	7.5	14	17	25	3.2	6.5	13	10	8.8
PEB402		1/4"	9	10	14	17	28	3.2	6.5	13	14	15.5
PEB6M5	6	M5×0.8	12.5	3.5	16.5	20	23.5	3.2	8	16	12	11.2
PEB601		1/8"	12.5	7.5	16.5	20	27.5	3.2	8	16	12	13.5
PEB602		1/4"	12.5	10	16.5	20	30.5	3.2	8	16	14	18.6
PEB603	8	3/8"	12.5	11	16.5	20	32	3.2	8	16	17	25.3
PEB801		1/8"	15	7.5	18.5	23	30.5	4.3	9.5	19	14	18.4
PEB802		1/4"	15	10	18.5	23	33	4.3	9.5	19	14	21.3
PEB803	10	3/8"	15	11	18.5	23	34.5	4.3	9.5	19	17	28.2
PEB804		1/2"	15	14	18.5	23	38.5	4.3	9.5	19	21	41
PEB1001		1/8"	18	7.5	21	26.5	34	4.3	11	22	17	26.7
PEB1002	12	1/4"	18	10	21	26.5	36.5	4.3	11	22	17	29.2
PEB1003		3/8"	18	11	21	26.5	37.5	4.3	11	22	17	31.9
PEB1004		1/2"	18	14	21	26.5	41.5	4.3	11	22	21	45.4
PEB1202	12	1/4"	21	10	23	30	41	4.3	13	26	21	49.6
PEB1203		3/8"	21	11	23	30	42	4.3	13	26	21	51.2
PEB1204		1/2"	21	14	23	30	45	4.3	13	26	21	57.3

PYB Series



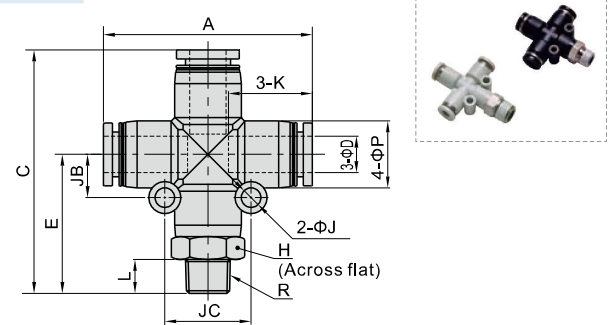
Model\Item	ΦD	R	ΦP	L	C	K	ΦJ	JA	DC	H	Weight(g)
PYB4M5	4	M5×0.8	9	3.5	35.5	14	3.2	13	10	9	6.7
PYB401		1/8"	9	7.5	39.5	14	3.2	13	10	10	9
PYB402		1/4"	9	10	42.5	14	3.2	13	10	14	10.8
PYB6M5	6	M5×0.8	12.5	3.5	40.5	16.5	3.2	15.5	12	12	11.1
PYB601		1/8"	12.5	7.5	44.5	16.5	3.2	15.5	12	12	13.7
PYB602		1/4"	12.5	10	47.5	16.5	3.2	15.5	12	14	18.2
PYB603	8	3/8"	12.5	11	49.0	16.5	3.2	15.5	12	17	25
PYB801		1/8"	15	7.5	50	18.5	3.2	17	14.5	14	19.8
PYB802		1/4"	15	10	52.5	18.5	3.2	17	14.5	14	22
PYB803	10	3/8"	15	11	54	18.5	3.2	17	14.5	17	27.7
PYB804		1/2"	15	14	58	18.5	3.2	17	14.5	21	40.8
PYB1001		1/8"	18	7.5	56.5	21	4.3	19.5	18	17	27.4
PYB1002	12	1/4"	18	10	59	21	4.3	19.5	18	17	29.5
PYB1003		3/8"	18	11	60	21	4.3	19.5	18	17	32.5
PYB1004		1/2"	18	14	64	21	4.3	19.5	18	21	45.4
PYB1202	12	1/4"	21	10	66	23	4.3	21	20.5	21	27.3
PYB1203		3/8"	21	11	67	23	4.3	21	20.5	21	51.8
PYB1204		1/2"	21	14	70	23	4.3	21	20.5	21	56.8

PED Series



Model\Item	ΦD	R	ΦP	L	K	EA	EB	ΦJ	JB	JC	H	Weight(g)
PED4M5	4	M5×0.8	9	3.5	14	17	21	3.2	6.5	13	9	6.8
PED401		1/8"	9	7.5	14	17	25	3.2	6.5	13	10	8.8
PED402		1/4"	9	10	14	17	28	3.2	6.5	13	14	15.5
PED6M5	6	M5×0.8	12.5	3.5	16.5	20	23.5	3.2	8	16	12	11.2
PED601		1/8"	12.5	7.5	16.5	20	27.5	3.2	8	16	12	13.5
PED602		1/4"	12.5	10	16.5	20	30.5	3.2	8	16	14	18.6
PED603	8	3/8"	12.5	11	16.5	20	32	3.2	8	16	17	25.3
PED801		1/8"	15	7.5	18.5	23	30.5	4.3	9.5	19	14	18.4
PED802		1/4"	15	10	18.5	23	33	4.3	9.5	19	14	21.3
PED803	10	3/8"	15	11	18.5	23	34.5	4.3	9.5	19	17	28.2
PED804		1/2"	15	14	18.5	23	38.5	4.3	9.5	19	21	41
PED1001		1/8"	18	7.5	21	26.5	34	4.3	11	22	17	26.7
PED1002	12	1/4"	18	10	21	26.5	36.5	4.3	11	22	17	29.2
PED1003		3/8"	18	11	21	26.5	37.5	4.3	11	22	17	31.9
PED1004		1/2"	18	14	21	26.5	41.5	4.3	11	22	21	45.4
PED1202	12	1/4"	21	10	23	30	41	4.3	13	26	21	49.6
PED1203		3/8"	21	11	23	30	42	4.3	13	26	21	51.2
PED1204		1/2"	21	14	23	30	45	4.3	13	26	21	57.3

PZB Series



Model\Item	ΦD	R	L	A	E	C	ΦP	K	ΦJ	JB	JC	H	Weight(g)
PZB601	6	1/8"	7.5		27.5	47.5	12.5	16.5	3.2	8	16	14	15.2
PZB602		1/4"	10	39.5	30.5	50.5						14	20.4
PZB603		3/8"	11		32	52						17	27
PZB801	8	1/8"	7.5		30.5	53.5						14	20.9
PZB802		1/4"	10	46	33	56	15	18.5	4.3	9.5	19	14	23.8
PZB803		3/8"	11		34.5	57.5						17	29.9
PZB804	10	1/2"	14		38.5	61.5						21	43.5
PZB1002		1/4"	10		36.5	63						17	33.5
PZB1003		3/8"	11	52.5	37.5	64	18	21	4.3	11	22	17	36.5
PZB1004	12	1/2"	14		41.5	68						21	49.2
PZB1203		3/8"	11	59.5	42	72	21	23	4.3	13	26	21	56.5
PZB1204		1/2"	14		45	75						21	65.4



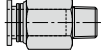
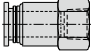
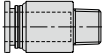

Accessories—One-Touch Fittings

Metal one-touch fittings

Ordering code

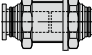
BPC 6 01 □

① ② ③ ④

① Model		② Port size	③ Thread connection	④ Thread type
BPC: Metal male connector 	BPCF: Metal female connector 	4 : Φ4mm 6 : Φ6mm 8 : Φ8mm 10 : Φ10mm 12 : Φ12mm	M5 : M5X0,8 01 : 1/8" 02 : 1/4" 03 : 3/8" 04 : 1/2"	Blank: PT
BPOC: Hexagon socket head metal male connector 	BPMF: Metal bulkhead female connector 			

BPM 6

① ②

① Model	② Port size
BPM: Metal bulkhead connector 	4 : Φ4mm 6 : Φ6mm 8 : Φ8mm 10 : Φ10mm 12 : Φ12mm

Specification

Operating pressure range	0~9kgf/cm²(0~0.9MPa)
Negative pressure	-750mmHg(10Torr)
Proof pressure	1.5MPa
Ambient and fluid temperature (°C)	0~150
Applicable tubing	Soft nylon or polyurethane
Color	Grey/black

Note: The temperature resistance level of the tubing should be confirmed first when used in high temperature environments.

Product feature

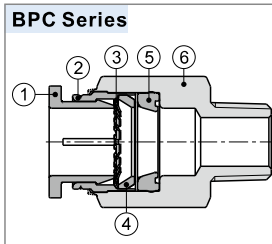
1. High flow capacity; The flow rate of these fittings is equivalent to that of the adaptable tubings.
2. Inserting or removal tubing is simple and convenient, and the connecting portion is reliable and durable.
3. Sealant is coated on threaded portion. The M5 metric thread is attached with a sealing gasket, to ensure no leakage of the threaded connection part.
4. The fitting metal body adopts a special nickel-plating process, which has good corrosion resistance.
5. Metal fittings can be used in high temperature environment.

Table for interface port and tube O.D.

Product series	Thread type	Port size				
		Φ4	Φ6	Φ8	Φ10	Φ12
BPC	M5	•	•			
	1/8"	•	•	•	•	
	1/4"	•	•	•	•	•
	3/8"		•	•	•	•
	1/2"				•	•
BPOC BPCF	M5	•	•			
	1/8"	•	•	•		
	1/4"		•	•	•	
	3/8"				•	•
BPMF	M5					
	1/8"	•	•	•		
	1/4"		•	•	•	
	3/8"				•	•
BPM						
		•	•	•	•	•

Inner structure

BPC Series		
NO.	Name	Material
1	Metal connector	Aluminum alloy
2	Locating ring	Aluminum alloy
3	Spring gasket	Stainless steel
4	Locating seat	Aluminum alloy
5	Special shape O-ring	Viton
6	Straight connector body	Brass

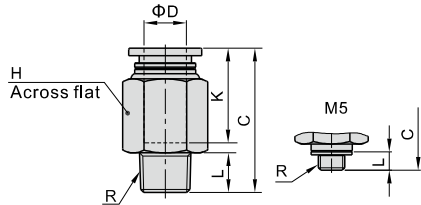


Accessories—One-Touch Fittings

Metal one-touch fittings

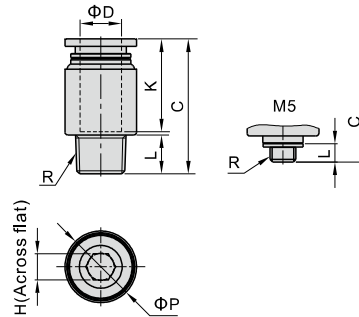
Dimensions

BPC Series



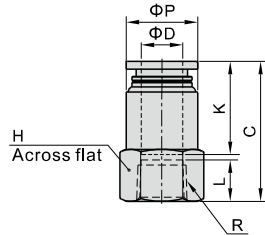
Model/Item	ΦD	R	L	C	K	H	Weight(g)
BPC4M5	4	M5X0.8	3.5	19.5	14	9	5.5
BPC401		1/8"	7.5	19.5	14	10	7.9
BPC402		1/4"	10	19	14	14	8.7
BPC6M5	6	M5X0.8	3.5	22	16	12	10.1
BPC601		1/8"	7.5	21.5	18	12	14.2
BPC602		1/4"	10	24	18	14	19.1
BPC603	8	3/8"	11	22.5	18	17	26.8
BPC801		1/8"	7.5	27.5	18	14	16.1
BPC802		1/4"	10	26.5	18	14	16
BPC803	10	3/8"	11	23	18	17	25.4
BPC1001		1/8"	7.5	29.5	20.5	17	24.5
BPC1002		1/4"	10	32	20.5	17	28
BPC1003	12	3/8"	11	27.5	20.5	17	34.6
BPC1004		1/2"	14	25.5	20.5	21	39.3
BPC1202		1/4"	10	34.5	22	21	44.5
BPC1203	12	3/8"	11	30	22	21	34.2
BPC1204		1/2"	14	32	22	21	47

BPOC Series



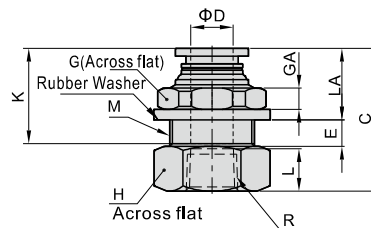
Model/Item	ΦD	R	ΦP	L	C	K	H	Weight(g)
BPOC4M5	4	M5X0.8	9	3.5	18.5	14	2	4.4
BPOC401		1/8"	10	7.5	17.5	14	2.5	6.6
BPOC6M5	6	M5X0.8	12	3.5	21	16	2	7.1
BPOC601		1/8"	12	7.5	21.5	18	4	8.4
BPOC602	8	1/4"	14	10	21.5	18	4	13.6
BPOC801		1/8"	14	7.5	26	17.5	5	12.3
BPOC802	10	1/4"	14	10	24.5	17.5	6	12.7
BPOC1002		1/4"	17	10	28.5	20.5	6	18.5
BPOC1003	12	3/8"	17	11	27.5	20.5	8	24.9
BPOC1203		3/8"	21	11	29.5	22	8	30.4
BPOC1204	12	1/2"	21	14	31.5	22	8	42.4

BPCF Series



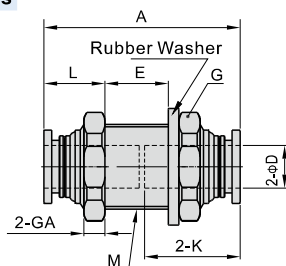
Model/Item	ΦD	R	ΦP	L	C	K	H	Weight(g)
BPCF4M5	4	M5X0.8	9	5	21	14	10	3.5
BPCF401		1/8"	9.5	8	23	14	14	5.3
BPCF6M5	6	M5X0.8	12	5	21	16	12	5.6
BPCF601		1/8"	12.5	8	25	16	14	7.2
BPCF602	8	1/4"	12.5	11	28	16	17	9.2
BPCF801		1/8"	14	8	27	18	14	7.1
BPCF802	10	1/4"	14.5	11	30	18	17	10.6
BPCF1002		1/4"	17	11	32.5	20.5	17	13.5
BPCF1003	12	3/8"	18	12	33.5	20.5	21	17.5
BPCF1203		3/8"	21	12	35	22	21	22
BPCF1204	12	1/2"	21	13.5	36.5	22	25	24.9

BPMF Series



Model/Item	ΦD	R	M	L	C	K	LA	E	GA	G	H	Weight(g)
BPMF401	4	1/8"	M12X1	8	25	14	12	4	4	14	14	7.6
BPMF601		1/8"	M14X1	8	25	16	12	5	4	17	17	10.4
BPMF602	6	1/4"	M14X1	11	30	16	12	5	4	17	17	12.2
BPMF801		1/8"	M16X1	8	27	18	13	5.5	4	19	19	13.9
BPMF802	8	1/4"	M16X1	11	31.5	18	13	5.5	4	19	19	15.3
BPMF1002		1/4"	M20X1	11	34.5	20.5	14	7.5	5	24	22	26.2
BPMF1003	10	3/8"	M20X1	12	35.5	20.5	14	7.5	5	24	22	24.4
BPMF1203		3/8"	M22X1	12	37	22	15	8	6	27	24	32.6
BPMF1204	12	1/2"	M22X1	13.5	38.5	22	15	8	6	27	25	31.8

BPM Series



Model/Item	ΦD	M	A	K	L	E	G(Across flat)	GA	Weight(g)
BPM4	4	M12X1	28.5	14	10	7	14	4	6.4
BPM6	6	M14X1	33	16	10	11	17	4	16.4
BPM8	8	M16X1	37	18	11	13	19	4	15.8
BPM10	10	M20X1	41.5	20.5	12	16	24	5	28.9
BPM12	12	M22X1	45	22	13	17.5	27	6	40.3

Accessories—One-Touch Fittings

One-touch fittings—tube-tube type

Ordering code

Same diameter type fittings

PE 6 □

① ② ③

① Model				② Port size	③ Standard color		
PM: Bulkhead union 	PE: Union tee 	PP: Plug 	PV: Union elbow 	4 : Φ4mm 6 : Φ6mm 8 : Φ8mm 10 : Φ10mm 12 : Φ12mm	Standard color: Specification	Adaptable model	
PLM: Bulkhead male elbow 	PY: Union "Y" 	PZ: Cross 	PU: Straight union 		Blank: Gray	Release button: Gray Body: Gray	PM Others
					D: Black	Release button: Black Body: Black	PM Others

Different diameter type fittings

PEG 6 - 4 □

① ② ③ ④

① Model					② Port size I	③ Port size II	④ Standard color	
PG: Different diameter straight 	PZG: Different diameter cross 	PEW: Different diameter tee 	PYW: Different diameter union "Y" 	PGJ: Plug-in reducer 	4: Φ4mm 6: Φ6mm 8: Φ8mm 10: Φ10mm 12: Φ124mm	4: Φ4mm 6: Φ6mm 8: Φ8mm 10: Φ10mm	Standard color	Specification
PEG: Different diameter tee 	PKG: Reducer triple branch union 	PHK: Universal reducer triple branch union 	PHD: Universal reducer four branch union 				Blank: Gray	Release button: Gray Body: Gray
							D: Black	Release button: Black Body: Black

Specification

Operating pressure range	0~10kgf/cm ² (0~1.0MPa)
Negative pressure	-750mmHg(10Torr)
Proof pressure	1.5MPa
Ambient and fluid temperature (°C)	-20~70
Applicable tubing	Soft nylon or polyurethane
Color	Grey/black

Product feature

1. Variable models can be widely used in every kind of pneumatic systems.
2. High circulation performance: bear the same flow with the volume of the tubing inside diameter.
3. Connect tubing easily and conveniently. The tubing connection portion is safe and durable.
4. The threaded portion is covered with sealant and the M5 thread is attached with a sealing gasket to prevent air leakage over the connection thread portion.

Inner structure

No.	Item	Material
1	Release button	POM
2	Guide	Aluminum alloy
3	Spring gasket	Stainless steel
4	Chuck	POM
5	O-ring	NBR
6	Body	Aluminum alloy
7	Rubber washer	NBR
8	Nut	Aluminum alloy

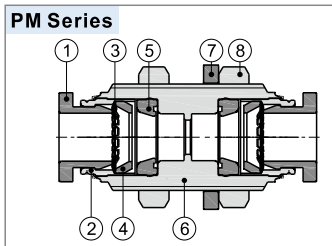


Table for interface port and tube O.D.

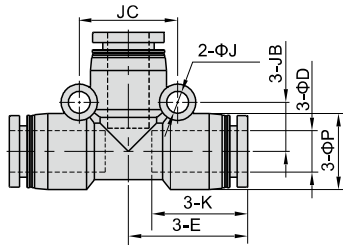
Product series	Port size I	Port size II					
		Φ4	Φ6	Φ8	Φ10		
PG PGJ	Φ4						
	Φ6	•					
	Φ8	•	•				
	Φ10		•	•			
	Φ12			•	•		
PEG PEW PYW	Φ4						
	Φ6	•					
	Φ8		•				
	Φ10			•			
PZG	Φ4						
	Φ6	•					
	Φ8		•				
	Φ10			•			
PKG	Φ4						
	Φ6	•					
	Φ8		•				
	Φ10			•			
PHK PHD	Φ4						
	Φ6						
	Φ8		•				
	Φ10			•			
Product series	Port size	Φ4	Φ6	Φ8	Φ10	Φ12	
		•	•	•	•	•	
		PE, PY, PV, PU					
		PM, PLM, PP, PZ					

Accessories—One-Touch Fittings

One-touch fittings—tube-tube type

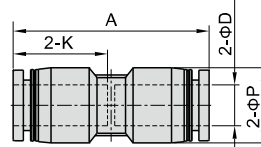
Dimensions

PE Series



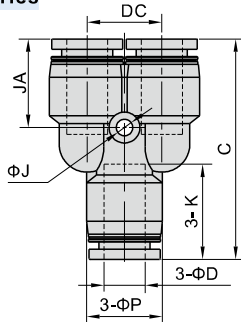
Model\Item	ΦD	ΦP	K	E	ΦJ	JB	JC	Weight(g)
PE4	4	9	14	17	3.2	6.5	13	3.1
PE6	6	12.5	16.5	20	3.2	8	16	6.1
PE8	8	15	18.5	23	4.3	9.5	19	8.8
PE10	10	18	21	26.5	4.3	11	22	13.8
PE12	12	21	23	30	4.3	13	26	21

PU Series



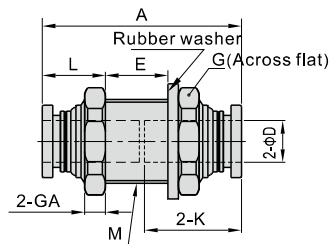
Model\Item	ΦD	ΦP	K	A	Weight(g)
PU4	4	9	14	29.5	1.7
PU6	6	12.5	16.5	34	3.6
PU8	8	15	18.5	38.5	5
PU10	10	18	21	43	8.1
PU12	12	21	23	47	12

PY Series



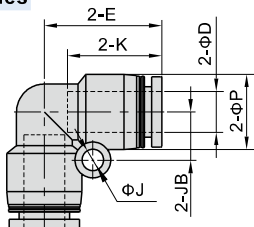
Model\Item	ΦD	ΦP	C	K	ΦJ	JA	DC	Weight(g)
PY4	4	9	31.5	14	3.2	13	10	3
PY6	6	12.5	37	16.5	3.2	15.5	12	6
PY8	8	15	42.5	18.5	3.2	17	14.5	8.6
PY10	10	18	48.5	21	4.3	19.5	18	14
PY12	12	21	54.5	23	4.3	21	20.5	21.2

PM Series



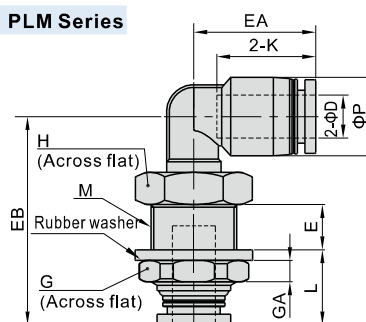
Model\Item	ΦD	M	A	K	L	E	GA	G	Weight(g)
PM4	4	M12X1	29	14	10	7	4	14	6.2
PM6	6	M14X1	34	16.5	10.5	11	4	17	9.5
PM8	8	M16X1	38	18.5	11.5	13	4	19	15.7
PM10	10	M20X1	43	21	12.5	16	5	24	22.5
PM12	12	M22X1	46.5	23	13.5	17.5	6	27	29.5

PV Series



Model\Item	ΦD	ΦP	K	E	ΦJ	JB	Weight(g)
PV4	4	9	14	17	3.2	6.5	1.9
PV6	6	12.5	16.5	20	3.2	8	4.2
PV8	8	15	18.5	23	4.3	9.5	6
PV10	10	18	21	26.5	4.3	11	9.3
PV12	12	21	23	30	4.3	13	14.6

PLM Series



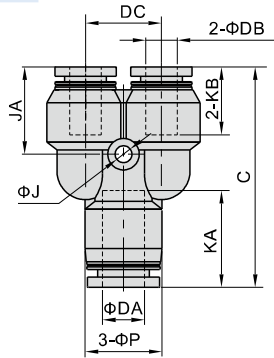
Model\Item	ΦD	ΦP	M	L	E	K	EA	EB	GA	G	H	Weight(g)
PLM4	4	9	M12X1	12	7.5	14	17	31	4	14	14	7.5
PLM6	6	12.5	M14X1	12.5	8.5	17	20	35.5	4	17	17	12.1
PLM8	8	15	M16X1	13.5	9	18.5	23	39	4	19	19	16.6
PLM10	10	18	M20X1	14.5	11	21	25.5	44.5	5	24	22	26.2
PLM12	12	21	M22X1	15.5	11	23	29.5	48	6	27	24	34

Accessories—One-Touch Fittings



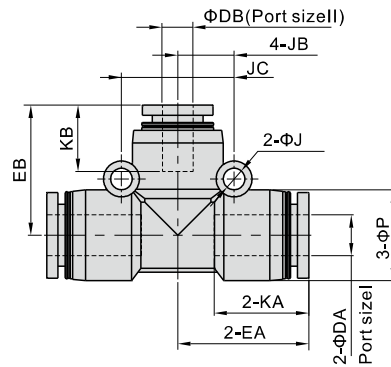
One-touch fittings—tube-tube type

PYW Series



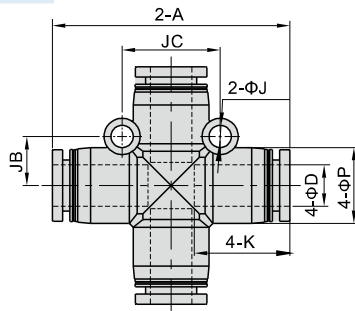
Model/Item	φDA	φDB	C	φP	KA	KB	φJ	JA	DC	Weight(g)
PYW6-4	6	4	36.5	12.5	16.5	14	3.2	15	12	5.8
PYW8-6	8	6	42	15	18.5	16.5	3.2	16.5	14.5	9.1
PYW10-8	10	8	48.5	18	21	18.5	4.3	19	18	14.1
PYW12-8	12	8	54	21	23	18.5	4.3	20.5	20.5	22.3
PYW12-10	12	10	54.5	21	23	21	4.3	21	20.5	21.7

PEG Series



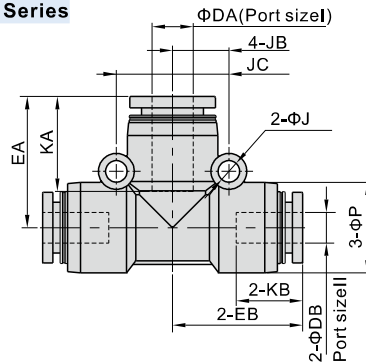
Model/Item	φDA	φDB	φP	KA	KB	EA	EB	φJ	JB	JC	Weight(g)
PEG6-4	6	4	12.5	16.5	14	20.0	19.5	3.2	8	16	7
PEG8-6	8	6	15	18.5	16.5	22.5	22	4.3	9.5	19	22.8
PEG10-8	10	8	18	21	18.5	25.5	25.5	4.3	11	22	15.1
PEG12-8	12	8	21	23	18.5	29	28.5	4.3	13	26	2.2
PEG12-10	12	10	21	23	21	29	29	4.3	13	26	21.5

PZ Series



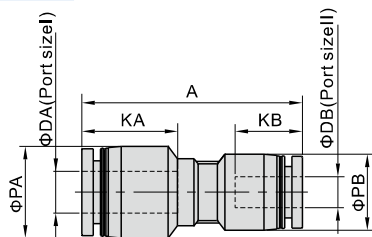
Model/Item	φD	A	φP	K	φJ	JB	JC	Weight(g)
PZ4	4	34	9	14	3.2	6.5	13	3.9
PZ6	6	39.5	12.5	16.5	3.2	8	16	7.9
PZ8	8	46	15	18.5	4.3	9.5	19	11.1
PZ10	10	52.5	18	21	4.3	11	22	17.5
PZ12	12	59.5	21	23	4.3	13	26	26.6

PEW Series



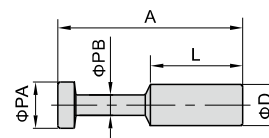
Model/Item	φDA	φDB	φP	KA	KB	EA	EB	φJ	JB	JC	Weight(g)
PEW6-4	6	4	12.5	16.5	14	20	19.5	3.2	8	16	7
PEW8-6	8	6	15	18.5	16.5	22.5	22	4.3	9.5	19	22.8
PEW10-8	10	8	18	21	18.5	25.5	25.5	4.3	11	22	15.1
PEW12-8	12	8	21	23	18.5	29	28.5	4.3	13	26	22
PEW12-10	12	10	21	23	21	29	29	4.3	13	26	21.5

PG Series



Model/Item	φDA	φDB	φPA	φPB	KA	KB	A	Weight(g)
PG6-4	6	4	12.5	9	16.5	14	33.5	2.7
PG8-4	8	4	15	12.5	18.5	14	37.5	4.5
PG8-6	8	6	15	12.5	18.5	16.5	38	4.5
PG10-6	10	6	18	15	21	16.5	42	6.9
PG10-8	10	8	18	15	21	18.5	42.5	6.7
PG12-8	12	8	21	18	23	18.5	46.5	10.3
PG12-10	12	10	21	18	23	21	47	10.2

PP Series



Model/Item	φD	φPA	φPB	L	A	Weight(g)
PP4	4	5	3	15	27.5	0.7
PP6	6	7	3	17	32	0.9
PP8	8	9	4	18	36	1.6
PP10	10	11	5	20	42	2.5
PP12	12	13	6	23	44	4.3

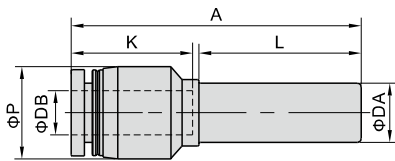


Accessories—One-Touch Fittings



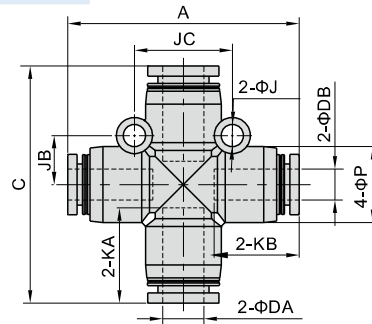
One-touch fittings—tube-tube type

PGJ Series



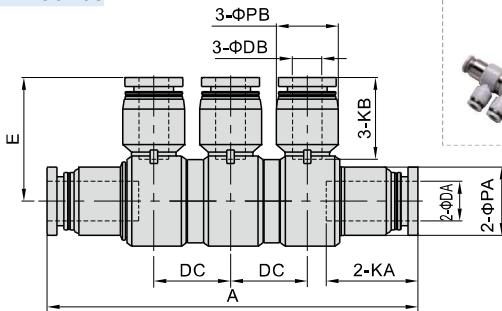
Model\Item	ΦDA	ΦDB	ΦP	K	L	A	Weight(g)
PGJ6-4	6	4	9	14	21	35	1.5
PGJ8-4	8	4	12.5	14	22	39	2.6
PGJ8-6	8	6	12.5	16.5	22	39.5	3.2
PGJ10-6	10	6	15	16.5	25	44	4.1
PGJ10-8	10	8	15	18.5	25	44.5	3.9
PGJ12-8	12	8	18	18.5	26	48.5	6.2
PGJ12-10	12	10	18	21	26	49	6

PZG Series



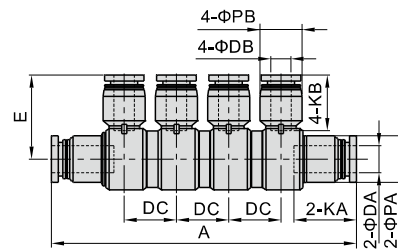
Model\Item	ΦDA	ΦDB	A	C	ΦP	KA	KB	ΦJ	JB	JC	Weight(g)
PZG6-4	6	4	39	39.5	12.5	16.5	14	3.2	8	16	8.2
PZG8-6	8	6	45	46	15	18.5	16.5	4.3	9.5	19	12
PZG10-8	10	8	52	52.5	18	21	18.5	4.3	11	22	18.1
PZG12-10	12	10	59	59.5	21	23	21	4.3	13	26	29

PHK Series



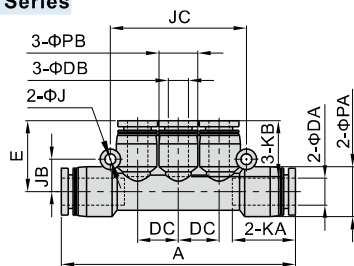
Model\Item	ΦDA	ΦDB	A	ΦPA	ΦPB	KA	KB	DC	E	Weight(g)
PHK8-6	8	6	75	14	12.5	18.5	16.5	15.5	25	28.4
PHK10-8	10	8	85.5	17	15	21	18.5	16.5	29.5	45

PHD Series



Model\Item	ΦDA	ΦDB	A	ΦPA	ΦPB	KA	KB	DC	E	Weight(g)
PHD8-6	8	6	90.5	14	12.5	18.5	16.5	15.5	25	18.7
PHD10-8	10	8	102.5	17	15	21	18.5	16.5	29.5	52.7

PKG Series



Model\Item	ΦDA	ΦDB	A	ΦPA	ΦPB	KA	KB	ΦJ	JB	JC	DC	E	Weight(g)
PKG6-4	6	4	58	12.5	9	16.5	14	3.2	8	34	10	17.5	8.6
PKG8-6	8	6	69	15	12.5	18.5	16.5	3.2	9.5	40	12	21	13.5
PKG10-8	10	8	80	18	15	21	18.5	4.3	11	48	14.5	24	20.7



Accessories—One-Touch Fittings

One-touch fittings—threaded type

Ordering code

BB 01 01 □

① ② ③ ④

① Model	② Thread connection I	③ Thread connection II	④ Thread type
BB: Male connector 	BD: Male & female connector[Note1] 	BU: Double female connector 	BZ: Hexagon head cap plug[Note2]
	01 : 1/8" 02 : 1/4" 03 : 3/8" 04 : 1/2"	01 : 1/8" 02 : 1/4" 03 : 3/8" 04 : 1/2"	Blank: PT

[Note1] For BD series, Thread I is Female thread, Thread II is male thread; [Note2] For BZ series, no thread II and thread I is male thread.

Specification

Operating pressure range	0~10kgf/cm ² (0~1.0MPa)
Negative pressure	-750mmHg(10Torr)
Proof pressure	3.0MPa
Ambient and fluid temperature (°C)	0~150

Configuration table of tubing thread

Product series	Thread connection I	Thread connection II			
		01	02	03	04
BB	01	•	•	•	•
	02		•	•	•
	03			•	•
	04				•
BD	01		•	•	•
	02			•	•
	03				•
	04				
BU	01	•			
	02		•		
	03			•	
	04				•

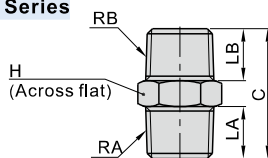
Product series	Thread connection			
	01	02	03	04
BZ	•	•	•	•

Product feature

1. Variable models can be widely used in every kind of pneumatic systems.
2. High circulation performance bear the same flow with the volume of the tube innerdiameter.
3. The nickel plated body is anti-corrosion and anti-pollution, which allows a broader application.
4. Metal fittings can be used in high temperature environment.

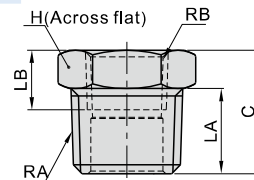
Dimensions

BB Series



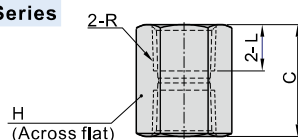
Model\Item	RA	RB	LA	LB	C	H	Weight(g)
BB0101	1/8"	1/8"	7.5	7.5	19.5	10	6.6
BB0102	1/4"	1/8"	10	7.5	22.5	14	12.1
BB0103	3/8"	1/8"	11	7.5	24	17	18.3
BB0202	1/4"	1/4"	10	10	25	14	14.6
BB0203	3/8"	1/4"	11	10	26.5	17	20.3
BB0204	1/2"	1/4"	14	10	30	21	34.3
BB0303	3/8"	3/8"	11	11	27.5	17	23.2
BB0304	1/2"	3/8"	14	11	31	21	36.2
BB0404	1/2"	1/2"	14	14	34	21	42.8

BD Series



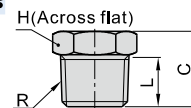
Model\Item	RA	RB	LA	LB	C	H	Weight(g)
BD0102	1/4"	1/8"	10	8	14.5	14	8.8
BD0103	3/8"	1/8"	11	8	16	17	17.1
BD0104	1/2"	1/8"	14	8	19.5	21	33.1
BD0203	3/8"	1/4"	11	11	16	17	12.7
BD0204	1/2"	1/4"	14	11	19.5	21	29.9
BD0304	1/2"	3/8"	14	12	19.5	21	22.5

BU Series



Model\Item	R	L	C	H	Weight(g)
BU0101	1/8"	8	17	14	4.7
BU0202	1/4"	11	23	17	8.1
BU0303	3/8"	12	25	21	12.7
BU0404	1/2"	13.5	28	25	18.0

BZ Series



Model\Item	R	L	C	H	Weight(g)
BZ01	1/8"	7.5	11	10	4.6
BZ02	1/4"	10	14.5	14	10.8
BZ03	3/8"	11	16	17	17.4
BZ04	1/2"	14	19.5	21	33

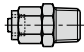
Accessories—One-Touch Fittings

One-touch fittings—threaded type

Ordering code

BKC 06 04 -01 □

① ② ③ ④ ⑤

① Model	② Tubing outer diameter	③ Tubing inner diameter	④ Thread connection	⑤ Thread type
BKC: Straight locknut connector 	04 : Φ4mm 06 : Φ6mm 08 : Φ8mm 10 : Φ10mm 12 : Φ12mm	25 : Φ2.5mm 04 : Φ4mm 05 : Φ5mm 06 : Φ6mm 65 : Φ6.5mm 75 : Φ7.5mm 08 : Φ8mm 09 : Φ9mm	M3 : M3X0.5 M5 : M5X0.8 01 : 1/8" 02 : 1/4" 03 : 3/8" 04 : 1/2"	Blank: PT

Note: When using the tubing Φ8×Φ5.5, the straight lock nut connector of BKC0806can be used.

Specification

Operating pressure range	0~10kgf/cm ² (0~1.0MPa)
Negative pressure	-750mmHg(10Torr)
Proof pressure	3.0MPa
Ambient and fluid temperature (°C)	0~150

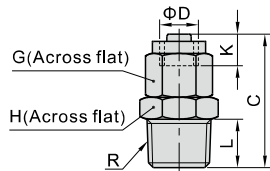
Note: The temperature resistance level of the tubing should be confirmed first when used in high temperature environments.

Product feature

1. Variable models can be widely used in every kind of pneumatic systems.
2. High circulation performance bear the same flow with the volume of the tube innerdiameter.
3. The nickel plated body is anti-corrosion and anti-pollution,which allows a broader application.
4. Metal fittings can be used in high temperature environments.

Dimensions

BKC Series



Model\Item	Tubing diameterΦD		R	L	C	K	G	H	Weight(g)	Model\Item	Tubing diameterΦD		R	L	C	K	G	H	Weight(g)	
	O.D	I.D									O.D	I.D								
BKC0425-M3	4	2.5	M3×0.5	3	17	5	8	8	4.4	BKC1065-02	10	6.5	1/4"	10	30	7.5	15	15	25.3	
BKC0425-M5			M5×0.8	3.5	17.5			8	4.8	BKC1065-03			3/8"	11	31.5			17	29.1	
BKC0425-01			1/8"	7.5	20.5			10	7.1	BKC1065-04			1/2"	14	35.5			21	44	
BKC0604-01	1/8"	7.5	22	10	9.9	BKC1075-02	1/4"	10	30	15			24.1							
BKC0604-02	6	4	1/4"	10	25.5	5.5	10	14	15.8	BKC1075-03			3/8"	11	31.5			17	28.9	
BKC0604-03			3/8"	11	27			17	22.5	BKC1075-04			1/2"	14	35.5			21	43.6	
BKC0805-01	8	5	1/8"	7.5	24	6.5	12	12	12.8	BKC1208-02	12	8	1/4"	10	30	7.5	17	17	30.5	
BKC0805-02			1/4"	10	27.5			14	17.2	BKC1208-03			3/8"	11	31.5			17	32.1	
BKC0805-03			3/8"	11	29			17	23.7	BKC1208-04			1/2"	14	35.5			21	46.7	
BKC0806-01			1/8"	7.5	24			12	13.1	BKC1209-02			1/4"	10	30			17	30.6	
BKC0806-02			5.5or6	1/4"	10			27.5	14	17.2			BKC1209-03	3/8"	11			31.5	17	31.9
BKC0806-03				3/8"	11			29	17	23.6			BKC1209-04	1/2"	14			35.5	21	46.4

Installation and application

1. Method of inserting or removal a tubing

1.1 Inserting a tubing

Place the locking cap over the tubing, and insert the tubing into the body, then tighten the locking cap. (As figure 1)

1.2 Removing a tubing

Loosen the locking cap first, then remove the tubing. (As figure 2)

2. Method of tightening the connector thread

Tighten the connector with a hex wrench, as shown right.

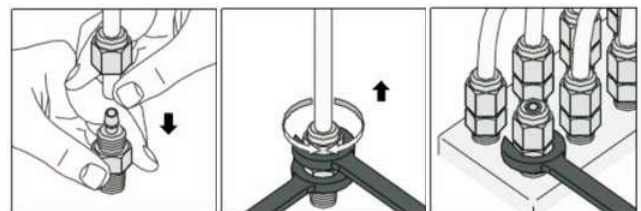


Figure 1

Figure 2

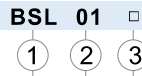
Figure 3



Accessories——Silencers

BSL, BSLM, BESL, PAL, PALM series

Ordering code



① Silencer Type	② Thread connection	③ Standard color	Color code	Color definition
BSL: Universal silencer BSLM: Mini Silencer	M5 : M5X0.8 01 : 1/8"	Type	Blank: grey	Top cover: grey/Body: gray
BESL: Throttling silencer	02 : 1/4"	PAL, PALM	D: Black	Top cover: black/Body: black
PAL: Plastic silencer PALM: Mini plastic Silencer	03 : 3/8" 04 : 1/2"	Others	No such code	

Product feature

BSL, BSLM, BESL Series :

1. This silencers have excellent noise silencing performance.
2. The installation of the silencer is simple and convenient, and the connecting portion is reliable and durable.
3. It is easy to adjust the exhaust flow of the throttling type silencer.

PAL Series, PALM Series :

1. The silencer body is made of plastic.
2. The mini type silencer has the characteristics of small volume and compact structure.

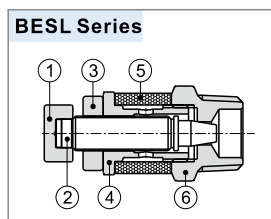
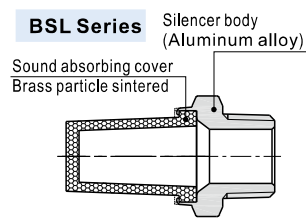
Configuration table of tubing thread

Product series	Thread connection				
	M5	01	02	03	04
BSL	•	•	•	•	•
BSLM	•	•	•	•	•
BESL		•	•	•	•
PAL		•	•	•	•
PALM		•	•		

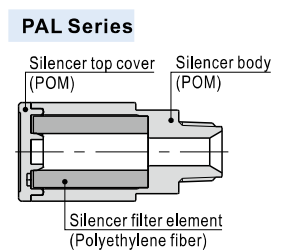
Specification

Model	BSLM5	BSL01	BSL02	BSL03	BSL04	BSLMM5	BSLM01	BSLM02	BSLM03	BSLM04
Thread connection	M5×0.8	1/8"	1/4"	3/8"	1/2"	M5×0.8	1/8"	1/4"	3/8"	1/2"
Silencing effect(dB)(0.5MPa)	13	13	13	13	13	13	13	13	13	13
Model	BESL01	BESL02	BESL03	BESL04	PAL01	PAL02	PAL03	PAL04	PALM01	PALM02
Thread connection	1/8"	1/4"	3/8"	1/2"	1/8"	1/4"	3/8"	1/2"	1/8"	1/4"
Silencing effect(dB)(0.5MPa)	13	13	13	13	25	25	25	25	25	25
Operating pressure	0~10kgf/cm ² (0~1.0MPa)									
Negative pressure	-750mmHg(10Torr)									
Proof pressure	1.5MPa									
Temperature range	-20~70°C									

Inner structure

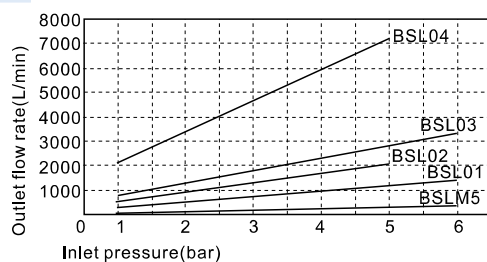


NO.	Name	Material
1	Adjusting cap	Aluminum alloy
2	Throttling column	Aluminum alloy
3	Locking cap	Aluminum alloy
4	Locking ring	Aluminum alloy
5	Silencer ring	Brass particle sintered
6	Silencer body	Aluminum alloy

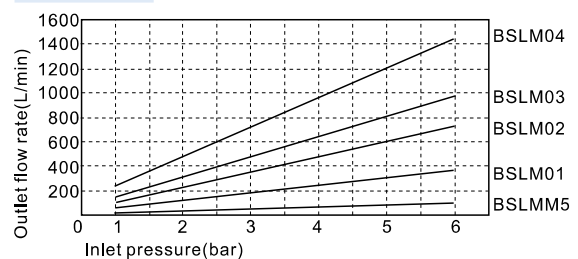


Flowrate characteristic

BSL Series



BSLM Series

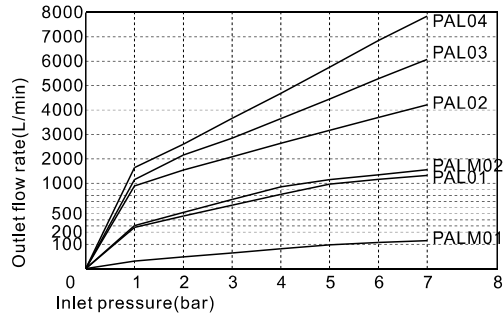


Accessories—Silencers

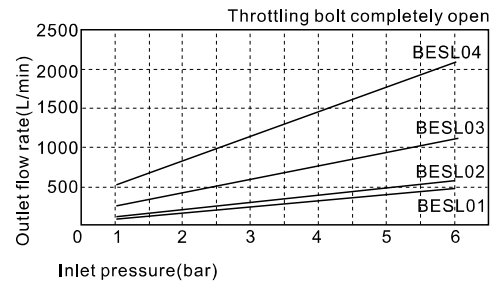
BSL, BSLM, BESL, PAL, PALM series

Flowrate characteristic

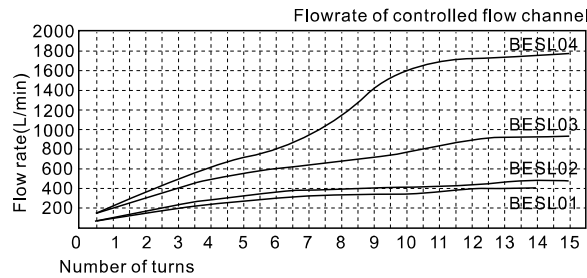
PAL, PALM Series



BESL Series (Inlet pressure and outlet flow rate)

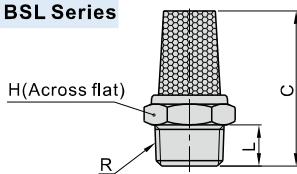


BESL Series



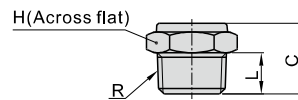
Dimensions

BSL Series



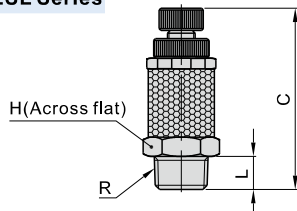
Model\Item	R	L	C	H	Weight(g)
BSLM5	M5×0.8	3.5	19.5	8	2.9
BSL01	1/8"	6	24	12	6.7
BSL02	1/4"	8	30	15	11.6
BSL03	3/8"	9	38.5	19	22
BSL04	1/2"	10.5	46	22	35

BSLM Series



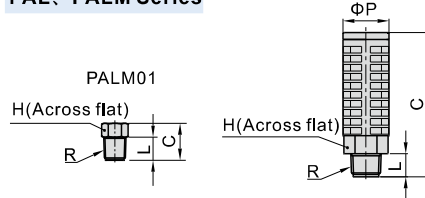
Model\Item	R	L	C	H	Weight(g)
BSLMM5	M5×0.8	3.5	9.5	8	2.3
BSLM01	1/8"	6	11	11	4.3
BSLM02	1/4"	8	13.5	15	8.4
BSLM03	3/8"	9	15.5	19	15.8
BSLM04	1/2"	10.5	19	22	25.9

BESL Series



Model\Item	R	L	C		H	Weight(g)
			max	min		
BESL01	1/8"	6	40.5	33	12	10
BESL02	1/4"	8	42.5	35	14	18.1
BESL03	3/8"	9	49	41.5	17	31.1
BESL04	1/2"	10.5	59.5	52	24	69.8

PAL, PALM Series



Model\Item	R	ΦP	L	C	H	Weight(g)
PAL01	1/8"	16	7	33	14	4.2
PALM01	1/8"	/	10	16	10	0.9
PAL02	1/4"	20	10	62.5	17	10.7
PALM02	1/4"	16	10	36	14	5.1
PAL03	3/8"	26	12	68	24	20
PAL04	1/2"	28	12	73	24	23.1

Plug-in Silencer

PPA Series



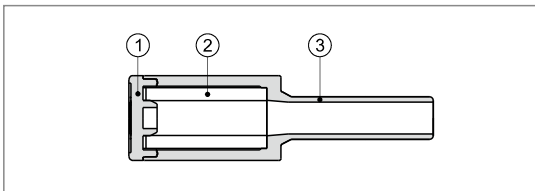
Specification

Model	PPA6	PPA8	PPA10	PPA12
Silencing effect(dB)(0.5MPa)	25	25	25	25
Operating pressure	0~10kgf/cm ² (0~1.0MPa)			
Negative pressure	-750mmHg(10Torr)			
Proof pressure	1.5MPa			
Temperature range	-20~70°C			

Product feature

1. Full resin, excellent noise reduction and suitable for copper free environment.
2. Plug-in design, mount quickly and easily.

Inner structure and material of major parts



NO.	Name	Material
1	Cap	POM
2	Silencer filter	PE
3	Body	POM

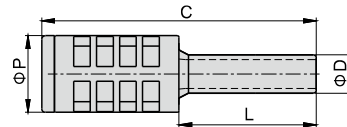
Ordering code

PPA 6

① ②

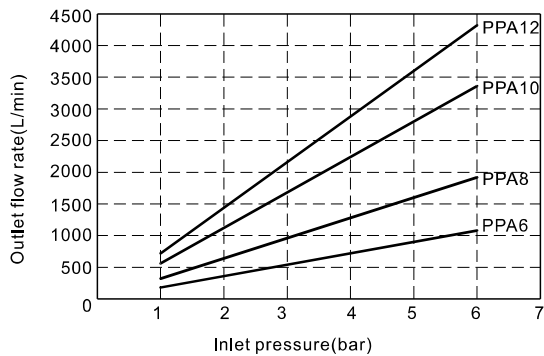
① Silencer Type	② Thread connection
PPA: Plug-in Silencer	6: Φ6 8: Φ8 10: Φ10 12: Φ12

Dimensions



Model/Item	C(Lenght)	D	L	P	Weight(g)
PPA6	43	6	21.5	12	2.0
PPA8	45	8	23	14	2.9
PPA10	61.5	10	26	16	5.3
PPA12	71.5	12	28	20	9.8

Flowrate characteristic



Accessories——Speed controllers

PSA, PSL, PSS series

Ordering code

PSL 6 01 A □ □
 ① ② ③ ④ ⑤ ⑥

① Model	② Port size	③ Thread connection	④ Control method	⑤ Standard color	⑥ Thread type
PSL: Speed controller 	4 : Φ4mm 6 : Φ6mm 8 : Φ8mm 10 : Φ10mm 12 : Φ12mm	Thread M5 : M5X0.8 Φ4 , Φ6 Adaptable port size	A: Meter-out Handle marking "A" Controlled flow Free flow	Standard color: Specification Blank: Gray Release button: Gray Body: Gray	Blank: PT
PSS: Universal speed controller 	01 : 1/8" 02 : 1/4" 03 : 3/8" 04 : 1/2"	Φ4 , Φ6 Φ8 , Φ10 Φ12	B: Meter-in Handle marking "B" Free flow Controlled flow	D: Black Release button: Black Body: Black	

PSA 6 □

① ② ③

① Model	② Port size	③ Standard color
PSA: Straight speed controller 	4 : Φ4mm 6 : Φ6mm 8 : Φ8mm 10 : Φ10mm 12 : Φ12mm	Standard color: Specification Blank: Gray Release button: Gray Body: Gray D: Black Release button: Black Body: Black

Product feature

1. The speed control is small size, and light weight with small installation space.
2. Effectively control the action speed and pressure signal transmission from pneumatic device.
3. Meter-in and meter-out types are optional, which is suitable for different size of actuators
4. Excellent flow characteristics, high sensitivity and easy to adjust.
5. The brass body adopts a special nickel-plating process, which has good corrosion resistance and anti-pollution property.
6. Anti-drop structure is designed on the regulating rod.
7. The sealant being coated on threaded portion can ensure no leakage of the threaded connection part.
8. The inserting direction of universal speed controller can be adjusted in 360°.

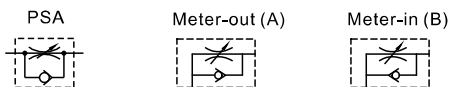
Specification

Operating pressure range	0~10kgf/cm ² (0~1.0MPa)
Negative pressure	-750mmHg(10Torr)
Proof pressure	1.5MPa
Ambient and fluid temperature (°C)	-20~70
Applicable tubing	Soft nylon or polyurethane
Color	Grey/black

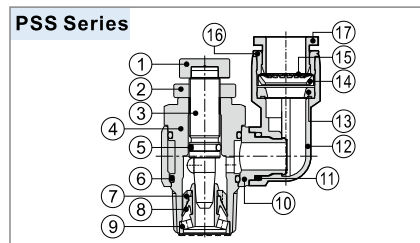
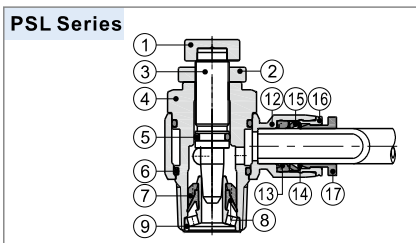
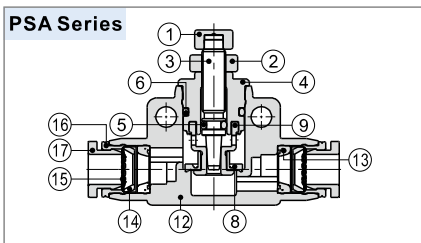
Table for interface port and tube O.D.

Product series	Thread type	Port size				
		Φ4	Φ6	Φ8	Φ10	Φ12
PSA	-	•	•	•	•	•
	M5	•	•			
	1/8"	•	•	•		
PSL	1/4"		•	•	•	
	3/8"		•	•	•	•
	1/2"			•	•	•
PSS	M5	•				
	1/8"		•	•		
	1/4"		•	•	•	
	3/8"				•	•
	1/2"				•	•

Symbol



Inner structure



NO. 1	Adjusting cap	Aluminum alloy	NO. 7	Holder	PBT	NO. 13	O-ring	NBR
2	Locking cap	Aluminum alloy	8	O-ring	NBR	14	Locating seat	POM
3	Throttling column	Brass	9	Throttling sleeve	Aluminum alloy/Brass	15	Spring gasket	Stainless steel
4	Throttling body	Brass	10	Plastic body	PBT	16	Locating ring	Aluminum alloy
5	O-ring	NBR	11	O-ring	NBR	17	Plastic interface	POM
6	O-ring	NBR	12	Plastic body	PBT			



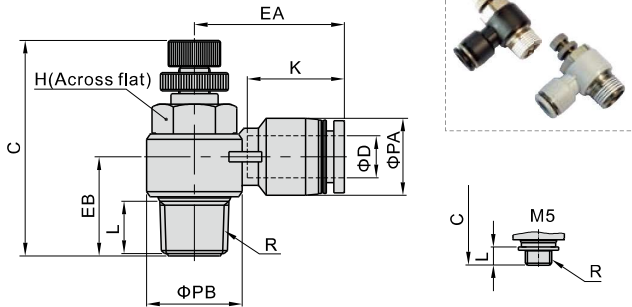
Accessories—Speed controllers



PSA, PSL, PSS series

Dimensions

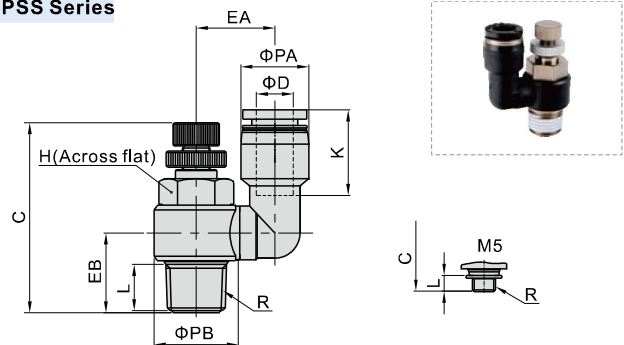
PSL Series



Model\Item [Note1]	ΦD	R	ΦPA	ΦPB	L	C		K	EA	EB	H	Weight (g)
						max	min					
PSL4M5□	4	M5×0.8	9	10	3.5	30	27.5	14	19	9.5	8	6.5
PSL401□		1/8"	9	14	7.5	41.5	35	14	20.5	15	11	16.5
PSL6M5□	6	M5×0.8	12.5	10	3.5	30	27.5	16.5	23.5	11.5	8	8
PSL601□		1/8"	12.5	14	7.5	41.5	35	16.5	23	15.5	11	17.5
PSL602□	1/4"	12.5	18	10	47.5	41	16.5	25	18	14	32	
PSL603□	3/8"	12.5	22.5	11	52.5	45.5	16.5	27	20	19	59.5	
PSL801□	8	1/8"	15	14	7.5	41.5	35	18.5	26.5	16.5	11	18
PSL802□		1/4"	15	18	10	47.5	41	18.5	28.5	19	14	33
PSL803□	3/8"	15	22.5	11	52.5	45.5	18.5	29.5	20	19	60	
PSL804□	1/2"	15	28	14	58.5	51.5	18.5	32	25	24	96.5	
PSL1002□	10	1/4"	18	18	10	47.5	41	21	31	20.5	14	34.5
PSL1003□		3/8"	18	22.5	11	52.5	45.5	21	33	21.5	19	62
PSL1004□	1/2"	18	28	14	58.5	51.5	21	35.5	25.5	24	98	
PSL1203□	12	3/8"	21	22.5	11	52.5	45.5	23	36	23.5	19	64
PSL1204□		1/2"	21	28	14	58.5	51.5	23	38	27	24	100

[Note1] "□" stands for A or B. A indicates meter-out type while B indicates meter-in type. The two types are with the same overall dimension.

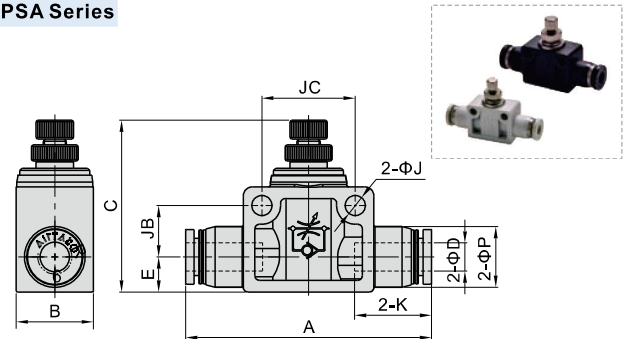
PSS Series



Model\Item [Note1]	ΦD	R	ΦPA	ΦPB	L	C		K	EA	EB	H	Weight (g)
						max	min					
PSS4M5□	4	M5×0.8	9	10	3.5	30	27.5	14	12.5	9.5	8	8.1
PSS601□	6	1/8"	12.5	14	7.5	41.5	35	17	17	15	11	19
PSS602□		1/4"	12.5	18	10	47.5	41	17	19	17.5	14	34.7
PSS801□	8	1/8"	15	14	7.5	41.5	35	18.5	17	15	11	20.2
PSS802□		1/4"	15	18	10	47.5	41	18.5	19	17.5	14	39.8
PSS1002□	10	1/4"	18	18	10	47.5	41	21	20.5	17.5	14	37.2
PSS1003□		3/8"	18	22.5	11	52.5	45.5	21	24	20	19	66
PSS1203□	12	3/8"	21	22.5	11	52.5	45.5	23	25.5	20	19	69.2
PSS1204□		1/2"	21	28	14	58.5	51.5	23	28	25	24	105.8

[Note1] "□" stands for A or B. A indicates meter-out type while B indicates meter-in type. The two types are with the same overall dimension.

PSA Series



Model\Item	ΦD	A	B	C		ΦP	E	K	ΦJ	JB	JC	Weight (g)
				max	min							
PSA4	4	41	11	29	26.5	9.5	7	14	3.2	6	14	7.85
PSA6	6	52.5	16.5	43.5	36.5	13	7.5	16.5	4.3	11	20	18.3
PSA8	8	59.5	16.5	47	40	15	8.5	18.5	4.3	11	22	23.5
PSA10	10	69	21	53.5	46.5	18	10.5	21	4.3	14.5	26	42.4
PSA12	12	78.5	26	58.5	51	21.5	12	23	4.3	17.5	32	67.5

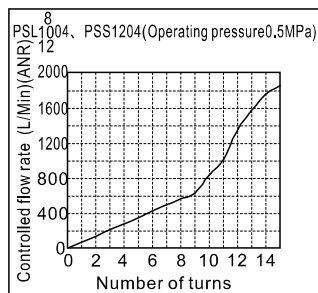
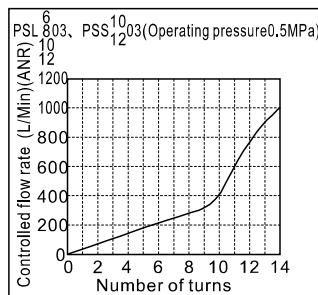
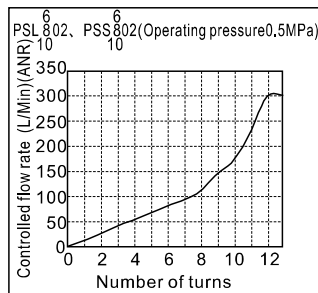
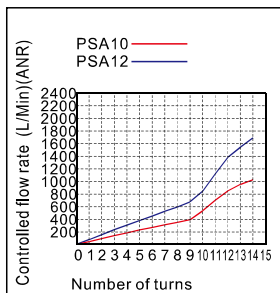
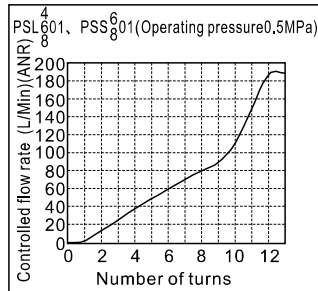
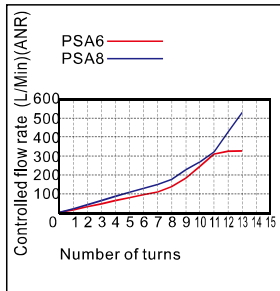
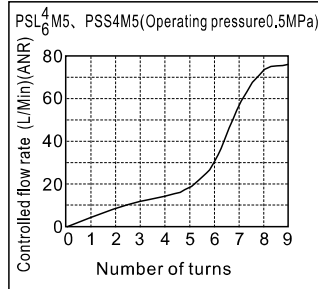
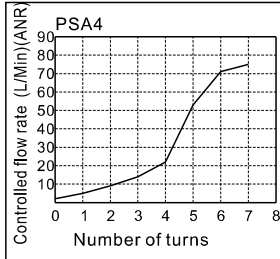


Accessories—Speed controllers

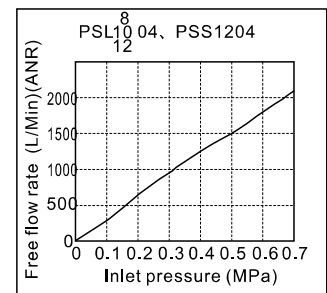
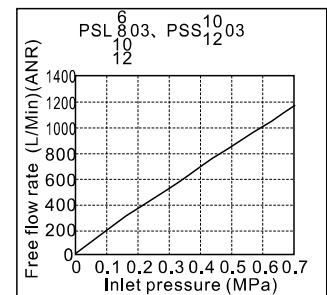
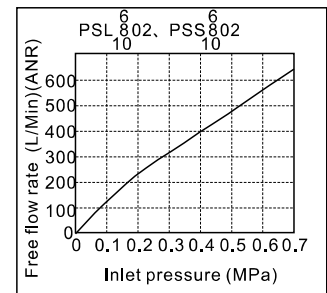
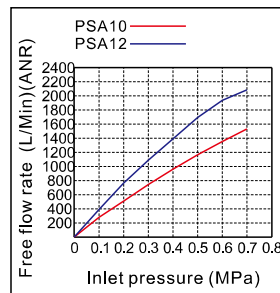
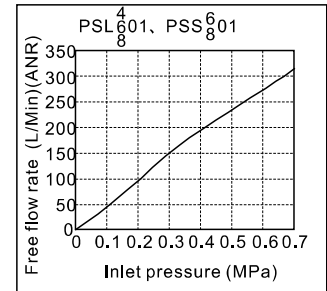
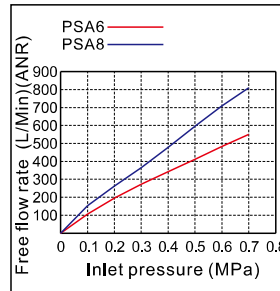
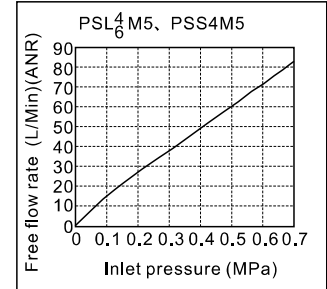
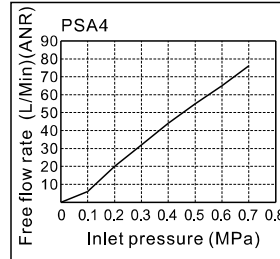
PSA, PSL, PSS series

Flowrate characteristic

Controlled flow rate



Free flow rate



Accessories—Speed controllers

PSA, PSL, PSS series

Selection, Installation and Operation

Selection

1. The speed controller has meter-out type and meter-in type:

	Working principle	Product identification
	A: Meter-out 1. The air flow is controlled from the threaded end to tubing connection end. 2. The air flow is free from the tubing connection end to the threaded end.	Handle marking "A"
	B: Meter-in 1. The air flow is free from the threaded end to tubing connection end. 2. The air flow is controlled from the tubing connection end to the threaded end.	Handle marking "B"

2. Select the different control method according to the actual requirement. The meter-out type is the first priority.

2.1. The application example of the meter-out speed controller	2.2. The application example of the meter-in speed controller
<p>Solenoid valve Double acting cylinder</p> <p>Meter-out speed controller</p>	<p>Solenoid valve Single acting cylinder</p> <p>Meter-in speed controller</p>

Installation

1. Installation and removal of tubing:

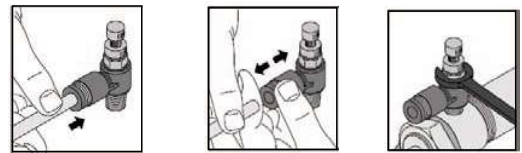
1.1. Installation of tubing

Grasp the tubing and slowly push it into the fitting until it comes to a stop. The tubing will be locked by the spring gasket.

1.2. Removal of tubing

Push the release button to open the spring gasket so that the tubing can be released.

Note: When remove the tubing, make sure the pressure in the tubing is Zero.



2. Mounting of the speed controller

Mount the speed controller into the inlet and outlet port of the cylinder with a wrench.

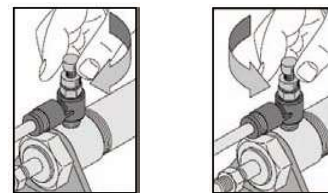
Note: Please refer to the fittings for the tightening torque and thread screw-in depth.

Operation

1. Adjustment of the cylinder speed

1.1. Make sure the speed controller is turned off before applying air pressure. The cylinder may fly out due to the high speed if the air is inlet when the speed controller is turned on.

1.2. Adjust the speed by opening the needle slowly from the fully closed state. When a needle valve is turned clockwise, the air flow through is reduced and the actuator speed decreases. When a needle valve is turned counter-clockwise, the air flow through is increased and the actuator speed increases.



2. Operation of the speed controller

2.1. Do not use tools such as pliers to rotate the handle. Do not apply excessive force or shock when the needle is at the place of top or bottom. It can cause damage or air leakage.

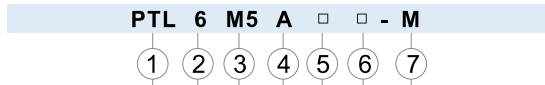
2.2. A certain amount of leakage is allowed in the closed state of the speed controller. It is not designed for the use as stop valve with zero air leakage.

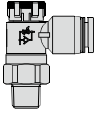


Accessories—Speed controllers(Push lock)



PTL Mini series

Ordering code

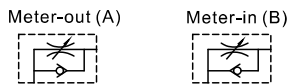


① Model	② Port size	③ Thread connection	④ Control method	⑤ Standard color	⑥ Thread type	⑦ Style
PTL: Speed controller (Push lock) 	4 : Φ4mm 6 : Φ6mm	M5 : M5X0.8 01 : 1/8"	A: Meter-out  Handle marking "A" Controlled flow Free flow	Standard color : Specification Blank: Gray Release button: Gray Body: Gray	Blank: PT	M: Mini type
			B: Meter-in  Handle marking "B" Free flow Controlled flow	D: Black Release button: Black Body: Black		

Specification

Operating pressure range	0~10kgf/cm ² (0~1.0MPa)
Negative pressure	-750mmHg(10Torr)
Proof pressure	1.5MPa
Ambient and fluid temperature (°C)	-20~70
Applicable tubing	Soft nylon or polyurethane
Color	Grey/black

Symbol



Selection, Installation and Operation

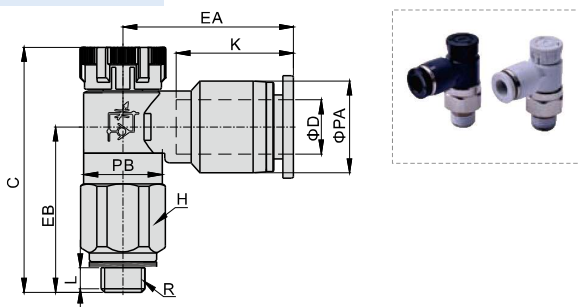
- The rotation torque of the push-lock speed controller cap should not be too large to avoid damage. It is recommended to use the torque below.

Thread size	Recommended torque(N.m)
M5	0.05
1/8"	0.08

- Push-lock speed controller installation instructions is the same as general one. Please refer to general type for specific content.

Dimensions

PTL Mini series



Model\Item [Note1]	ΦD	R	ΦPA	ΦPB	L	C		K	EA	EB	H	Weight (g)
						Pull	Push					
PTL4M5□-M	4	M5×0.8	8.5	9	3.5	29.5	28	12.5	16.5	19	9	5
PTL401□-M		1/8"	8.5	9	3.5	29.5	28	12.5	16.5	19	10	11
PTL6M5□-M	6	M5×0.8	10.5	9	3.5	29.5	28	13.5	19.5	19	9	6.2
PTL601□-M		1/8"	10.5	9	3.5	29.5	28	13.5	19.5	19	10	12

[Note1] "□" stands for A or B. A indicates meter-out type while B indicates meter-in type. The two types are with the same overall dimension.



Accessories—Speed controllers(Push lock)

PTL series

Ordering code

PTL 6 01 A □ □

① ② ③ ④ ⑤ ⑥

① Model	② Port size	③ Thread connection	④ Control method	⑤ Standard color	⑥ Thread type
PTL: Speed controller (Push lock) 	6 : Φ6mm	01 : 1/8" 02 : 1/4" 03 : 3/8"	A: Meter-out Handle marking "A"	Standard color: Specification	Blank: PT
	8 : Φ8mm	01 : 1/8" 02 : 1/4" 03 : 3/8" 04 : 1/2"		Blank: Gray Release button: Gray Body: Gray	
	10 : Φ10mm	02 : 1/4" 03 : 3/8" 04 : 1/2"	B: Meter-in Handle marking "B"	D: Black Release button: Black Body: Black	
	12 : Φ12mm	03 : 3/8" 04 : 1/2"			

Specification

Operating pressure range	0~10kgf/cm ² (0~1.0MPa)
Negative pressure	-750mmHg(10Torr)
Proof pressure	1.5MPa
Ambient and fluid temperature (°C)	-20~70
Applicable tubing	Soft nylon or polyurethane
Color	Grey/black

Product feature

1. Compare with standard speed controller, smaller size, lighter weight, suitable for more occasions.
2. Effectively control the action speed and the pressure signal transmission from pneumatic device.
3. Simple push-lock, operation.
4. Adjust quickly, easily and accurately.
5. Excellent flow rate characteristic, high sensitivity and easy to adjust.
6. Options of Meter-out and meter-in, applicable for every type actuator.
7. Effectively prevent from corrosion and pollution by nickle plated brass.
8. The sealant being coated on threaded portion can ensure no leakage of the threaded connection part.

Symbol

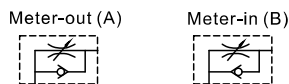


Table for interface port and tube O.D.

Product series	Thread type	Port size			
		Φ6	Φ8	Φ10	Φ12
PTL	1/8"	•	•		
	1/4"	•	•	•	
	3/8"	•	•	•	•
	1/2"		•	•	•

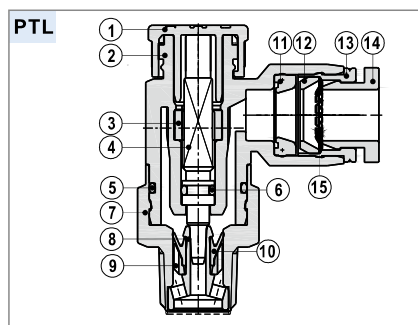
Selection, Installation and Operation

1. The rotation torque of the push-lock speed controller cap should not be too large to avoid damage.
It is recommended to use the torque below.

Thread size	Recommended torque(N.m)
1/8"	0.08
1/4"	0.16
3/8"	0.24
1/2"	0.32

2. Push-lock speed controller installation instructions is the same as general one. Please refer to general type for specific content.

Inner structure



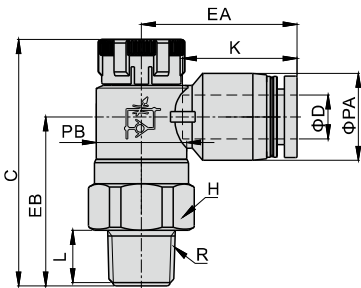
NO.	Name	Material	NO.	Name	Material
1	Adjusting cap	POM	9	Holder	PBT
2	Plastic body	PBT	10	O-ring	NBR
3	Locating ring	Aluminum alloy	11	O-ring	NBR
4	Throttling column	Aluminum alloy	12	Locating seat	POM
5	O-ring	NBR	13	Locating ring	Aluminum alloy
6	O-ring	NBR	14	Plastic interface	POM
7	Throttling body	Brass	15	Spring gasket	Stainless steel
8	Throttling sleeve	Aluminum alloy			

Accessories—Speed controllers(Push lock)

PTL series

Dimensions

PTL Series

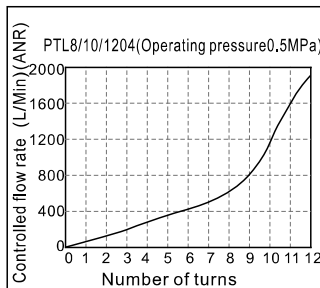
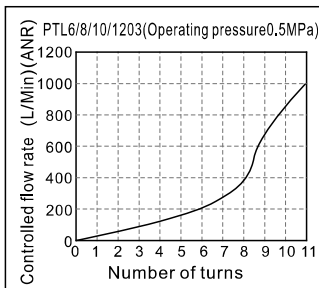
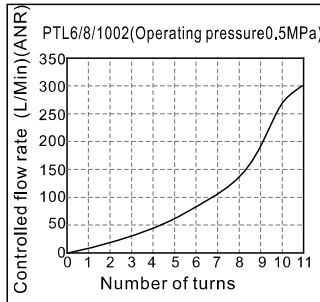
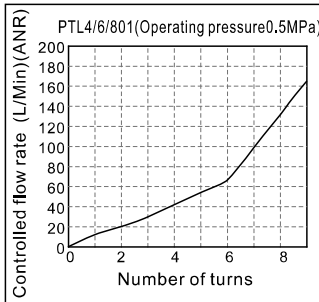
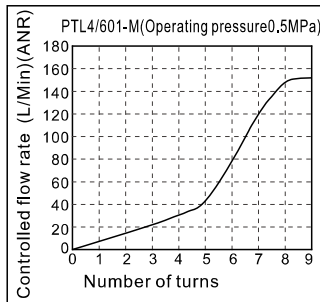
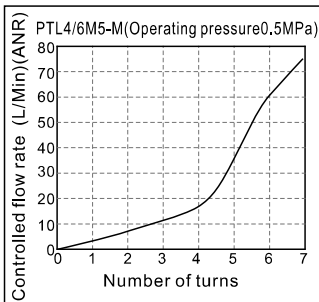


Model\Item [Note1]	ΦD	R	ΦPA	ΦPB	L	C		K	EA	EB	H	Weight (g)
						Pull	Push					
PTL601□	6	1/8"	12.5	13	8.5	36	34.5	16.5	22.5	23.5	14	12.5
PTL602□		1/4"	12.5	16.5	11	40.5	39	16.5	24	28	17	19.5
PTL603□		3/8"	12.5	19	12	44	42.5	16.5	25.5	31	19	28.5
PTL801□	8	1/8"	15	13	8.5	36	34.5	18.5	24.5	22.5	14	13
PTL802□		1/4"	15	16.5	11	40.5	39	18.5	26	27	17	20.5
PTL803□		3/8"	15	19	12	44	42.5	18.5	27	30	19	29
PTL804□	1/2"	15	24	15	52.5	51	18.5	29.5	37.5	24	49	
PTL1002□	10	1/4"	18	16.5	11	40.5	39	21	31	26	17	22
PTL1003□		3/8"	18	19	12	44	42.5	21	29	29	19	30.5
PTL1004□		1/2"	18	24	15	52.5	51	21	31.5	36.5	24	50.5
PTL1203□	12	3/8"	21	19	12	44	42.5	23	34.5	28	19	32.5
PTL1204□		1/2"	21	24	15	52.5	51	23	34	36	24	53

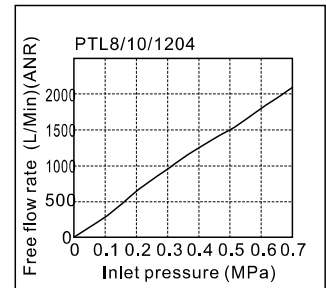
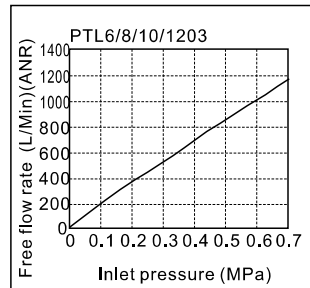
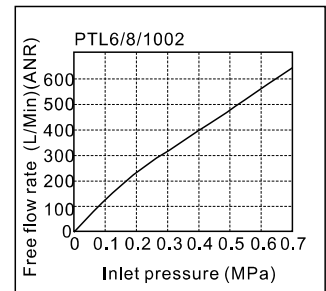
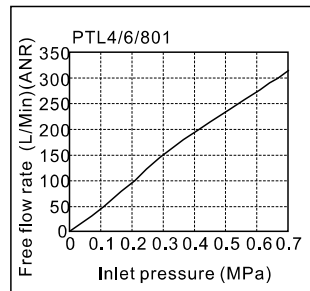
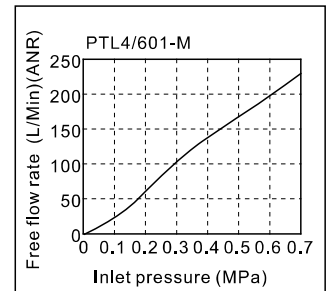
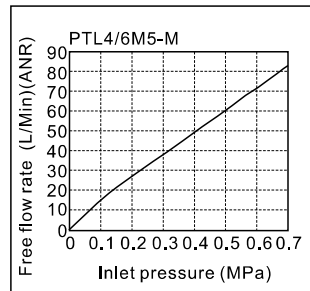
[Note 1] "□" stands for A or B. A indicates meter-out type while B indicates meter-in type. The two types are with the same overall dimension.

Flowrate characteristic

Controlled flow rate



Free flow rate



Accessories—Finger valve



PHV series



Specification

Model	PHV6	PHV8	PHV10	PHV12
Operating pressure range	0~10kgf/cm ² (0~1.0MPa)			
Negative pressure	-750mmHg(10Torr)			
Proof pressure	1.5MPa			
Ambient and fluid temperature (°C)	-20~70			
Applicable tubing	Soft nylon or polyurethane			
Color	Grey/black			

Symbol



Product feature

1. PHV series product doesn't contain brass, so can be used for forbidding brass condition.
2. When the three-way valve is closed, the outlet pressure is released, which facilitates in commissioning and maintenance.
3. The finger valve has excellent flow characteristic and high sensitive anti-direction characteristic.

Ordering code

PHV 6 A □



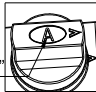
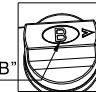
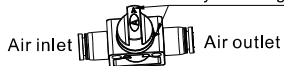
① Fitting type	② Port size	③ Valve specification		④ Standard color
PHV: Finger valve	6: Φ6mm	A: Three-way Knob identifier "A" 	B: Two-way Knob identifier "B" 	Blank: Gray(Release button: Gray Body: Gray) D: Black(Release button: Black Body: Black)
	8: Φ8mm			
	10: Φ10mm			
	12: Φ12mm			

Diagram of finger valve in the open and closed states

Closed state

Valve is closed, when the angle between the arrow on knob and the arrow on valve body is 90 degree

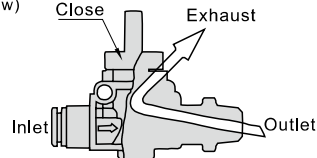


Opened state

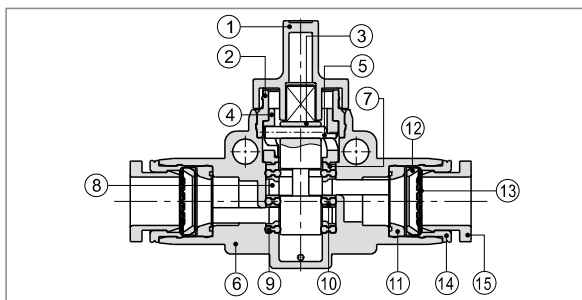
Valve is open, when the direction of the arrow on commutation knob is consistent with that on valve body.



When the three-way valve is closed, the outlet pressure is released, which facilitates in commissioning and maintenance. (as figure below)

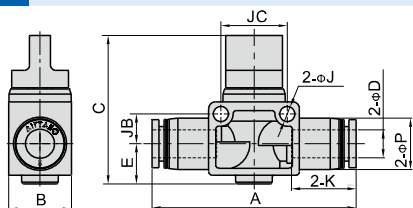


Inner structure



NO.	Name	Material	NO.	Name	Material
1	Knob	POM	9	Special shape O-ring	NBR
2	Fixing ring	Aluminum alloy	10	Spacer ring	Aluminum alloy
3	Spool	Aluminum alloy	11	Special shape O-ring	NBR
4	Cam groove block	POM	12	Locating seat	POM
5	Pin	Stainless steel	13	Spring gasket	Stainless steel
6	Plastic body	PBT	14	Locating ring	Aluminum alloy
7	Locating block	Aluminum alloy	15	Plastic interface	POM
8	Spacer	POM			

Dimensions



Model/Item	ΦD	A	B	C	ΦP	K	E	ΦJ	JB	JC	Weight(g)
PHV6□	6	51.5	17	40.5	12.5	16.5	10	4.3	8	18	14.3
PHV8□	8	58.5	18	42.5	15	18.5	11.5	4.3	8.5	19	17.5
PHV10□	10	66	21	42	18	21	11	4.3	11	24	25.1
PHV12□	12	71	22	46	21	23	13	4.3	11	24	31.4

Note: "□" indicates "A" or "B", "A" indicates three-way, and "B" indicates two-way. The two kinds of valve have same dimensions.