

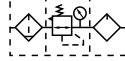
Preparation unit——GA Series

GAC100 Series F.R.L. combination



Symbol

Reflux valve option is not available



Specification

Model	GAC100M5	GAC10006
Fluid	Air	
Port size [Note1]	M5	1/8"
Filtering grade	40μm or 5μm	
Pressure range	0.15~0.9MPa(20~130psi)	
Max. pressure	1.0MPa(145psi)	
Proof pressure	1.5MPa(215psi)	
Temperature range	-5~70°C(Unfreeze)	
Capacity of drain bowl	6CC	
Capacity of oil bowl	9CC	
Recommended lubricant	ISO VG 32 or equivalent	
Weight	216g	
Constitute	Filter	GAF100M5 GAF10006
	Regulator	GAR100M5 GAR10006
	Lubricator	GAL100M5 GAL10006

[Note1] PT thread, G thread and NPT thread are available.

Ordering code

GAC100 06 S W G

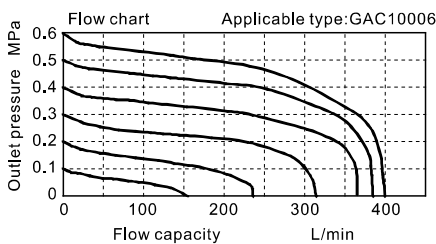
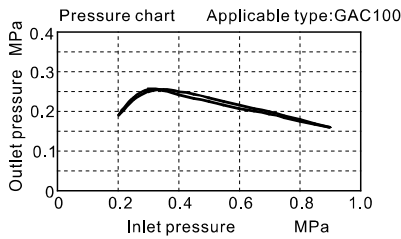
① ② ③ ④ ⑤ ⑥ ⑦ ⑧ ⑨

① Model	② Bowl material	③ Port size	④ Drain type	⑤ Type code	⑥ Pressure gauge	⑦ Filtering grade	⑧ Thread type[Note2]	⑨ Code of reflux valve
GAC100:GA100 Series F.R.L unit	Blank : PC	M5: M5 06: 1/8"	Blank: Semi-auto drain+Manual drain	S: Standard L: Lower pressure [Note1]	Blank: Circular N: No gauge	Blank: 40μm W: 5μm	Blank: PT (MPa/psi) G: G (bar/MPa) T: NPT (psi/bar)	Blank: Reflux valve is not available

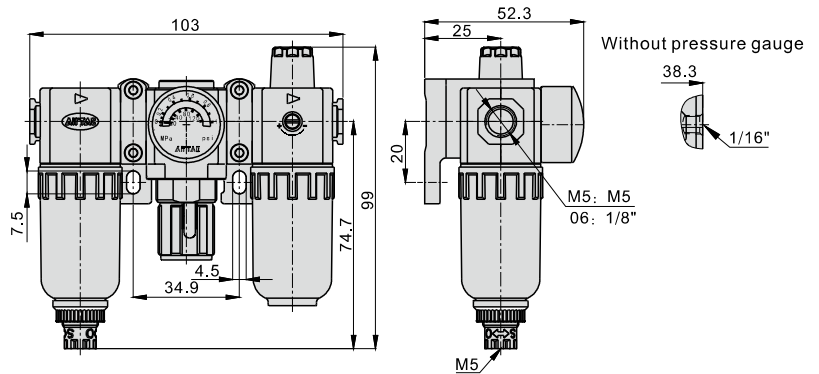
[Note1] The working pressure range of lower pressure type is 0.15~0.4MPa(20~58psi) ;

[Note 2] Thread type means connecting thread and scales of pressure gauge while port size is M5.

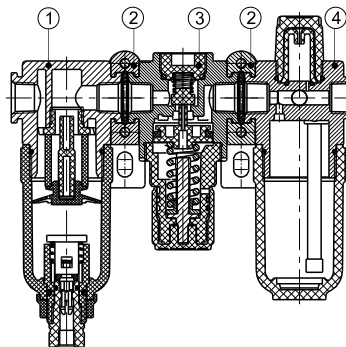
Pressure and Flow chart



Dimensions



Inner structure



No.	Item
1	GAF100 series filter
2	Bracket
3	GAR100 series regulator
4	GAL100 series lubricator



Preparation unit——GA Series

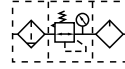


GAC Series F.R.L. combination

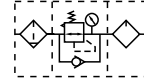


Symbol

No reflux valve is attached



Reflux valve is attached



Product feature

1. Quick and reliable mounting clamps makes it convenient to install and use.
2. The performance of pressure adjustment is reliable with high precision.
3. The efficiency of eliminating moisture and solid grain is high.
4. Two drain types are available: manual drain+semi-auto drain and automatic drain.
5. Three bowl materials are available: PC, Metal and Nylon.

Specification

Model	GAC200-06	GAC200-08	GAC300-08	GAC300-10	GAC300-15	GAC400-10	GAC400-15	GAC500-20	GAC600-20	GAC600-25	
Fluid	Air										
Port size [Note1]	1/8"	1/4"	1/4"	3/8"	1/2"	3/8"	1/2"	3/4"	3/4"	1"	
Filtering grade	40µm or 5µm										
Pressure range	0.15~0.9MPa(20~130psi)										
Max. pressure	1.0MPa(145psi)										
Proof pressure	1.5MPa(215psi)										
Temperature range	-5~70°C(Unfreeze)										
Capacity of drain bowl	25CC		60CC			100CC		108CC	205CC		
Capacity of oil bowl	36CC		98CC			185CC		225CC	410CC		
Recommended lubricant	ISO VG 32 or equivalent										
Weight	750g		1300g			2390g		2460g	4600g		
Constitute	Filter	GAF200-06	GAF200-08	GAF300-08	GAF300-10	GAF300-15	GAF400-10	GAF400-15	GAF500-20	GAF600-20	GAF600-25
	Regulator	GAR200-06	GAR200-08	GAR300-08	GAR300-10	GAR300-15	GAR400-10	GAR400-15	GAR500-20	GAR600-20	GAR600-25
	Lubricator	GAL200-06	GAL200-08	GAL300-08	GAL300-10	GAL300-15	GAL400-10	GAL400-15	GAL500-20	GAL600-20	GAL600-25

[Note1] PT thread, G thread and NPT thread are available.

Ordering code

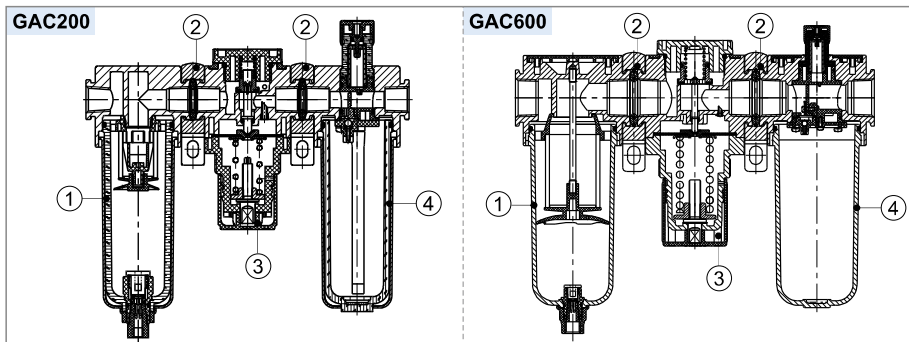
GAC300 □ 10 □ S □ W G K

① ② ③ ④ ⑤ ⑥ ⑦ ⑧ ⑨

① Model	② Bowl material	③ Port size	④ Drain type	⑤ Type code	⑥ Pressure gauge	⑦ Filtering grade	⑧ Thread type	⑨ Code of reflux valve
GAC200:GA200 Series F.R.L unit	Blank : PC bowl C: Metal bowl N: Nylon bowl C: Metal bowl	06: 1/8" 08: 1/4"	Blank: Semi-auto drain +Manual drain A: Automatic drain	S: Standard L: Lower pressure [Note1] S: Standard	Blank: Circular N: No gauge [Note2]	Blank: 40µm W: 5µm	Blank: PT (MPa/psi) G: G (bar/MPa) T: NPT (psi/bar)	Blank: No reverse flow valve is attached K: Reverse flow valve is attached [Note2]
GAC300:GA300 Series F.R.L unit		08: 1/4" 10: 3/8" 15: 1/2"						
GAC400:GA400 Series F.R.L unit		10: 3/8" 15: 1/2"						
GAC500:GA500 Series F.R.L unit		20: 3/4"						
GAC600:GA600 Series F.R.L unit		20: 3/4" 25: 1"						

[Note1] The work pressure of lower pressure type is 0.15~0.4MPa(20~58psi) ; [Note2] Please refer to page 246 for details of sealing plate Installation and reflux valve.

Inner structure



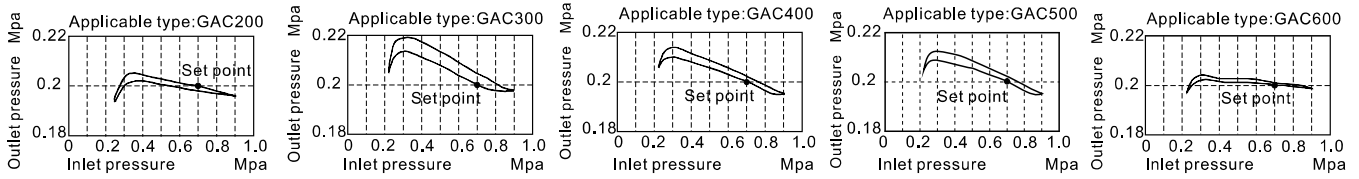
No.	Item	No.	Item
1	GA series filter	3	GA series regulator
2	Bracket	4	GA series lubricator

Preparation unit—GA Series

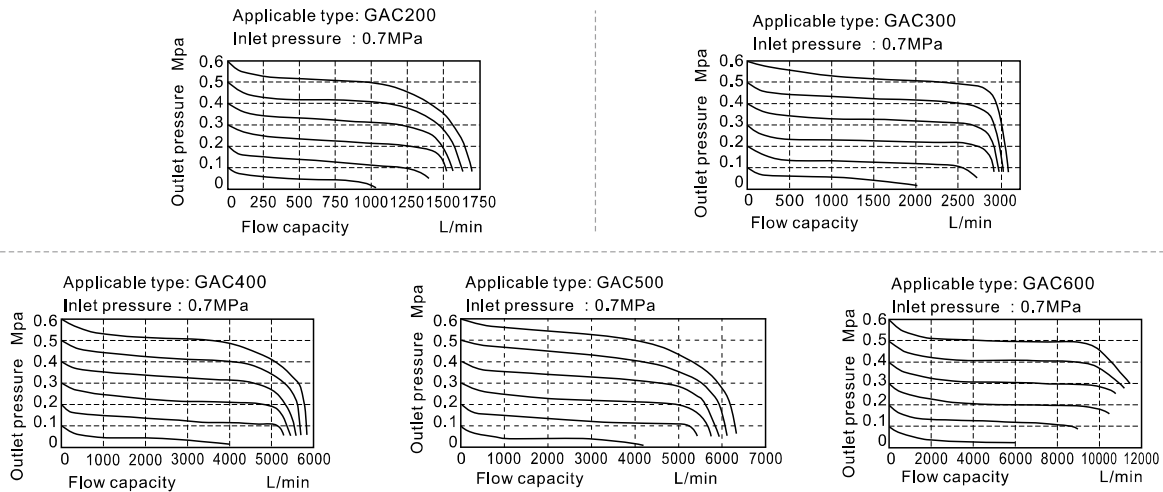


GAC Series F.R.L. combination

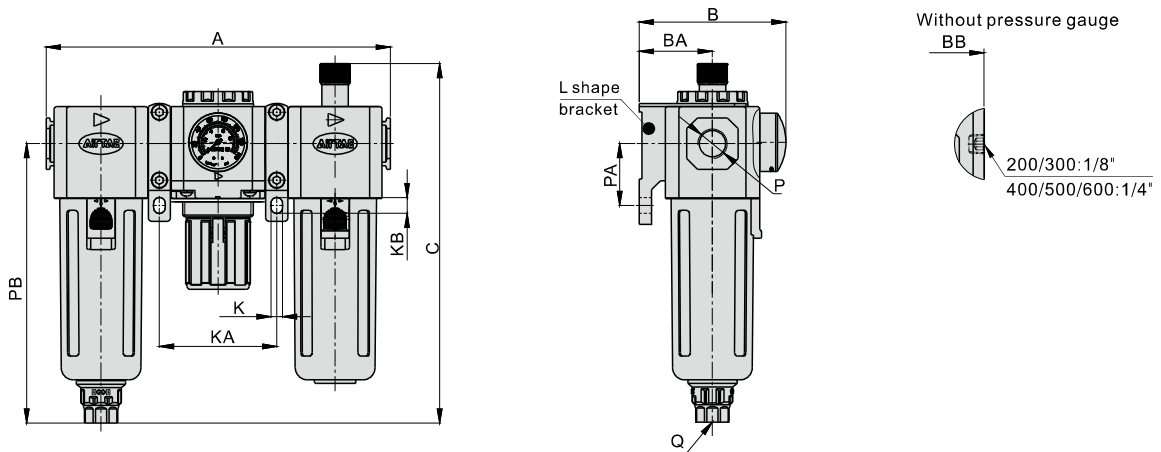
Pressure chart



Flow chart



Dimensions



Model\Item	A	B	BA	BB	C	K	KA	KB	P	PA	PB	Q
GAC200-06	163.5	69	30	51.5	160	5.5	55.5	8.5	1/8"	25	120	M5X0.8
GAC200-08	163.5	69	30	51.5	160	5.5	55.5	8.5	1/4"	25	120	M5X0.8
GAC300-08	195	83	41.5	67.5	203.5	6.5	66.5	9	1/4"	35	158	G1/4
GAC300-10	195	83	41.5	67.5	203.5	6.5	66.5	9	3/8"	35	158	G1/4
GAC300-15	195	83	41.5	67.5	203.5	6.5	66.5	9	1/2"	35	158	G1/4
GAC400-10	248	99	50	84	227	8.6	84	12	3/8"	40	177.5	G1/4
GAC400-15	248	99	50	84	227	8.6	84	12	1/2"	40	177.5	G1/4
GAC500-20	254	100	50	85	241	8.6	86	12	3/4"	40	191.5	G1/4
GAC600-20	312	128	70	113	267.5	11	106	16	3/4"	50	205	G1/4
GAC600-25	312	128	70	113	267.5	11	106	16	1"	50	205	G1/4



Preparation unit——GA Series

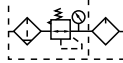


GAFC100 Series FR.L combination



Symbol

Reflux valve option is not available



Specification

Model	GAFC100M5	GAFC10006
Fluid	Air	
Port size [Note1]	M5	1/8"
Filtering grade	40µm or 5µm	
Pressure range	0.15~0.9MPa(20~130psi)	
Max. pressure	1.0MPa(145psi)	
Proof pressure	1.5MPa(215psi)	
Temperature range	-5~70°C(Unfreeze)	
Capacity of drain bowl	6CC	
Capacity of oil bowl	9CC	
Recommended lubricant	ISO VG 32 or equivalent	
Weight	158g	
Constitute	Filter & Regulator	GAFC100M5
	Lubricator	GAL100M5
		GAFC10006
		GAL10006

[Note1] PT thread, G thread and NPT thread are available.

Ordering code

GAFC100 □ 06 □ S □ W G □

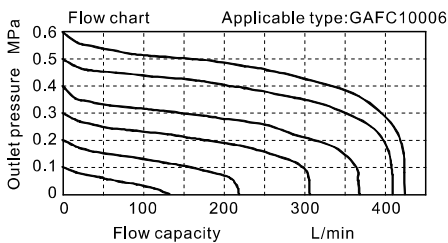
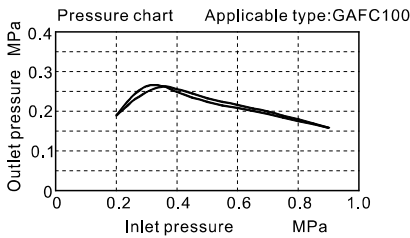
① ② ③ ④ ⑤ ⑥ ⑦ ⑧ ⑨

① Model	② Bowl material	③ Port size	④ Drain type	⑤ Type code	⑥ Pressure gauge	⑦ Filtering grade	⑧ Thread type[Note2]	⑨ Code of reflux valve
GAFC100:GA100 Series FR.L unit	Blank : PC	M5: M5 06: 1/8"	Blank: Semi-auto drain+Manual drain	S: Standard L: Lower pressure [Note1]	Blank: Circular N: No gauge	Blank: 40µm W: 5µm	Blank: PT (MPa/psi) G: G (bar/MPa) T: NPT (psi/bar)	Blank: Reflux valve is not available

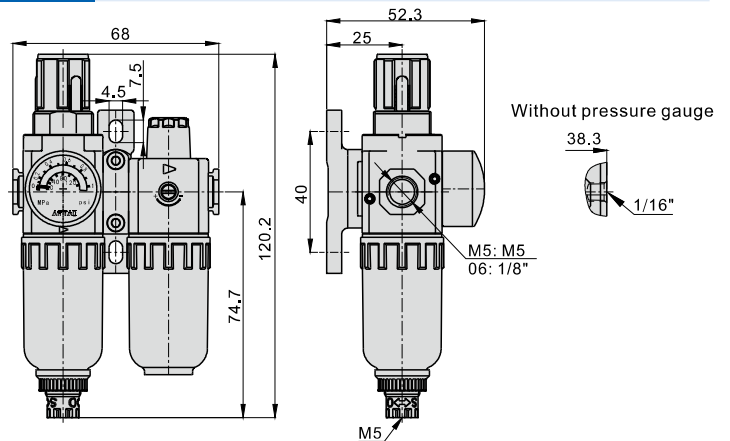
[Note1] The working pressure range of lower pressure type is 0.15~0.4MPa(20~58psi) ;

[Note 2] Thread type means connecting thread and scales of pressure gauge while port size is M5.

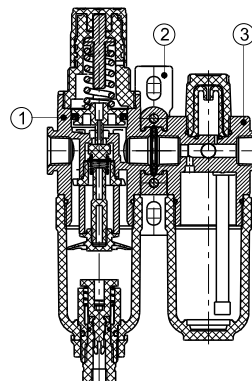
Pressure and Flow chart



Dimensions



Inner structure



No.	Item
1	GAFC100 series filter & regulator
2	Bracket
3	GAL 100 series lubricator



Preparation unit——GA Series

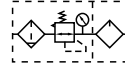


GAFC Series FR.L. combination

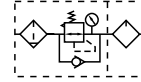


Symbol

No reflux valve is attached



Reflux valve is attached



Product feature

1. Quick and reliable mounting clamps makes it convenient to install and use.
2. The performance of pressure adjustment is reliable with high precision.
3. The efficiency of eliminating moisture and solid grain is high.
4. Two drain types are available: manual drain+semi-auto drain and automatic drain.
5. Three bowl materials are available: PC, Metal and Nylon.

Specification

Model	GAFC200-06	GAFC200-08	GAFC300-08	GAFC300-10	GAFC300-15	GAFC400-10	GAFC400-15	GAFC500-20	GAFC600-20	GAFC600-25	
Fluid	Air										
Port size [Note1]	1/8"	1/4"	1/4"	3/8"	1/2"	3/8"	1/2"	3/4"	3/4"	1"	
Filtering grade	40μm or 5μm										
Pressure range	0.15~0.9MPa(20~130psi)										
Max. pressure	1.0MPa(145psi)										
Proof pressure	1.5MPa(215psi)										
Temperature range	-5~70°C(Unfreeze)										
Capacity of drain bowl	25CC		60CC			100CC		108CC	205CC		
Capacity of oil bowl	36CC		98CC			185CC		225CC	410CC		
Recommended lubricant	ISO VG 32 or equivalent										
Weight	590g		1020g			1810g		1910g	3430g		
Constitute	Filter & Regulator	GAFR200-06	GAFR200-08	GAFR300-08	GAFR300-10	GAFR300-15	GAFR400-10	GAFR400-15	GAFR500-20	GAFR600-20	GAFR600-25
	Lubricator	GAL200-06	GAL200-08	GAL300-08	GAL300-10	GAL300-15	GAL400-10	GAL400-15	GAL500-20	GAL600-20	GAL600-25

[Note1] PT thread, G thread and NPT thread are available.

Ordering code

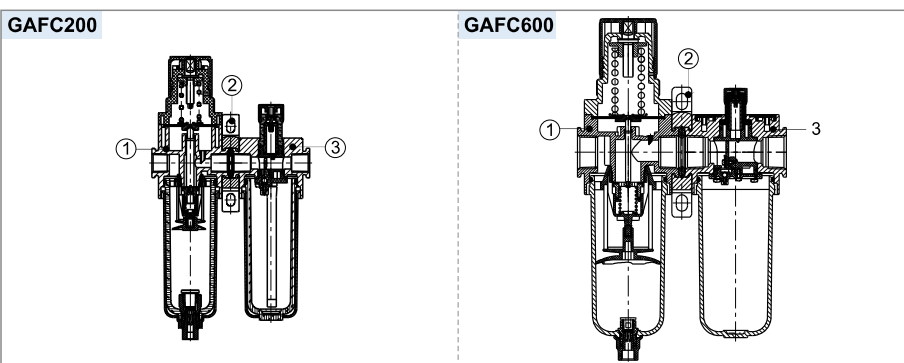
GAFC300 □ 10 □ S □ W G K



① Model	② Bowl material	③ Port size	④ Drain type	⑤ Type code	⑥ Pressure gauge	⑦ Filtering grade	⑧ Thread type	⑨ Code of reflux valve
GAFC200:GA200 Series FR.L unit	Blank : PC bowl C: Metal bowl N: Nylon bowl	06: 1/8" 08: 1/4"	Blank: Semi-auto drain +Manual drain A: Automatic drain	S: Standard	Blank: Circular N: No gauge [Note2]	Blank: 40μm W: 5μm	Blank: PT (MPa/psi) G: G (bar/MPa) T: NPT (psi/bar)	Blank: No reverse flow valve is attached K: Reverse flow valve is attached [Note2]
GAFC300:GA300 Series FR.L unit		08: 1/4" 10: 3/8" 15: 1/2"		L: Lower pressure [Note1]				
GAFC400:GA400 Series FR.L unit		10: 3/8" 15: 1/2"						
GAFC500:GA500 Series FR.L unit		20: 3/4"						
GAFC600:GA600 Series FR.L unit		20: 3/4" 25: 1"		S: Standard				

[Note1] The work pressure of lower pressure type is 0.15~0.4MPa(20~58psi) ; [Note2] Please refer to page 246 for details of sealing plate Installation and reflux valve.

Inner structure



No.	Item
1	GA series filter & regulator
2	Bracket
3	GA series lubricator

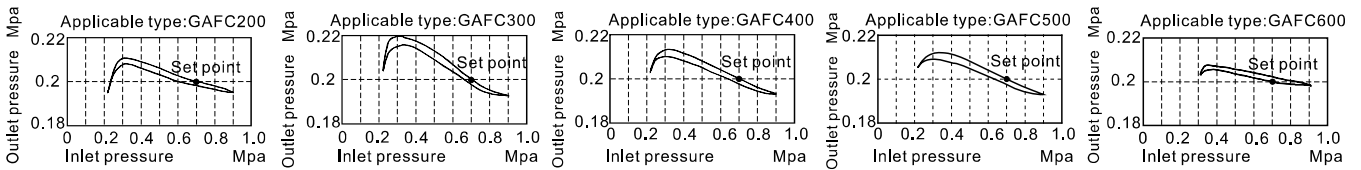


Preparation unit—GA Series

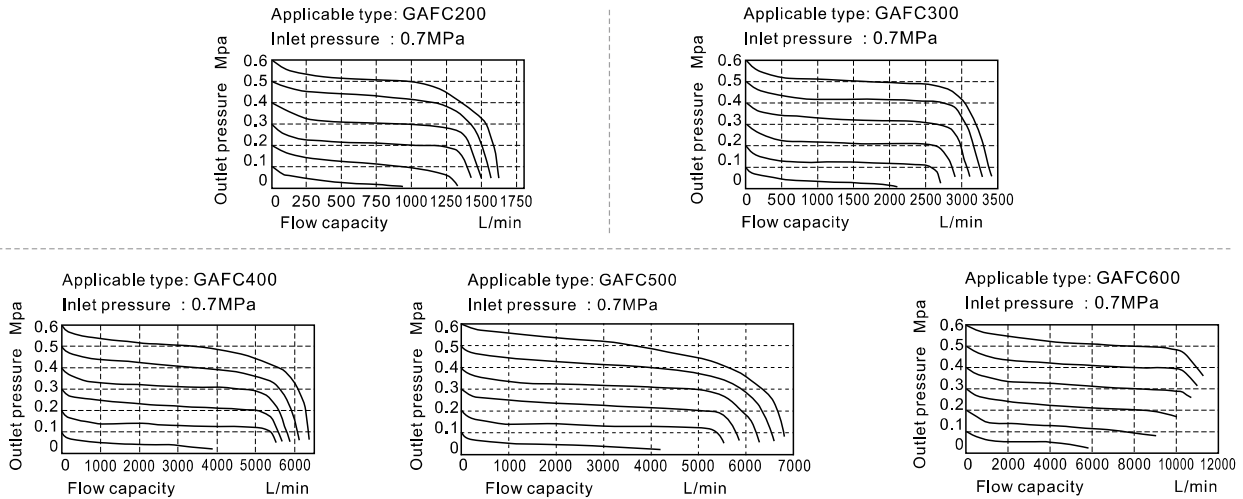


GAFC Series FR.L. combination

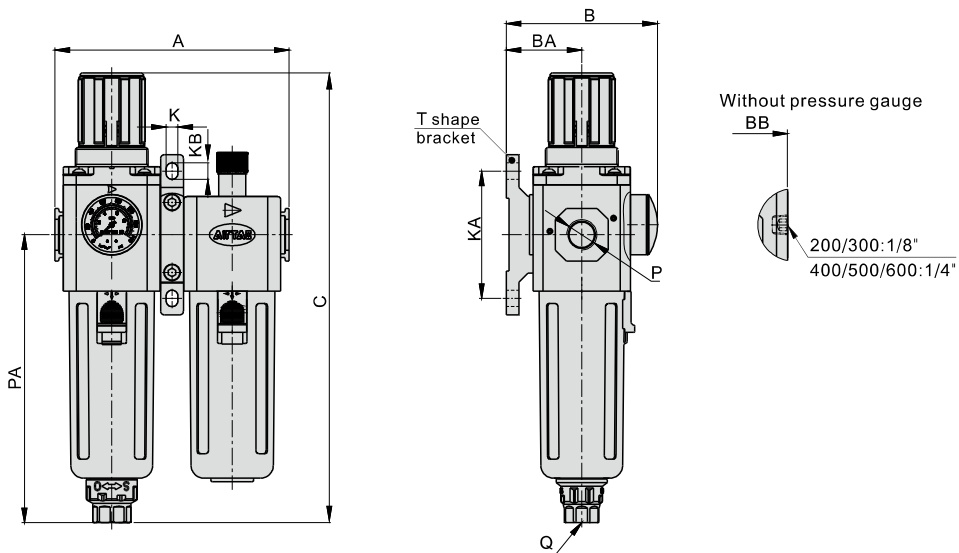
Pressure chart



Flow chart



Dimensions



Model\Item	A	B	BA	BB	C	K	KA	KB	P	PA	Q
GAFC200-06	107,5	69	30	51,5	192,5	5,5	50	8,5	1/8"	120	M5X0,8
GAFC200-08	107,5	69	30	51,5	192,5	5,5	50	8,5	1/4"	120	M5X0,8
GAFC300-08	128,5	83	41,5	67,5	247	6,5	70	9	1/4"	158	G1/4
GAFC300-10	128,5	83	41,5	67,5	247	6,5	70	9	3/8"	158	G1/4
GAFC300-15	128,5	83	41,5	67,5	247	6,5	70	9	1/2"	158	G1/4
GAFC400-10	164	99	50	84	285,5	8,6	80	12	3/8"	177,5	G1/4
GAFC400-15	164	99	50	84	285,5	8,6	80	12	1/2"	177,5	G1/4
GAFC500-20	168	100	50	85	299,5	8,6	80	12	3/4"	191,5	G1/4
GAFC600-20	206	128	70	113	336,5	11	100	16	3/4"	205	G1/4
GAFC600-25	206	128	70	113	336,5	11	100	16	1"	205	G1/4



Preparation unit——GA Series

GAFR100 Series filter & regulator



Symbol

Reflux valve option is not available



Specification

Model	GAFR100M5	GAFR10006
Fluid	Air	
Port size [Note1]	M5	1/8"
Filtering grade	40µm or 5µm	
Pressure range	0.15~0.9MPa(20~130psi)	
Max. pressure	1.0MPa(145psi)	
Proof pressure	1.5MPa(215psi)	
Temperature range	-5~70°C(Unfreeze)	
Capacity of drain bowl	6CC	
Weight	80g	

[Note1] PT thread, G thread and NPT thread are available.

Ordering code

GAFR100 06 S W G

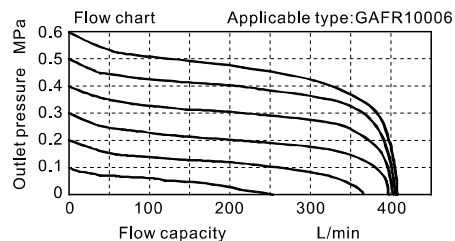
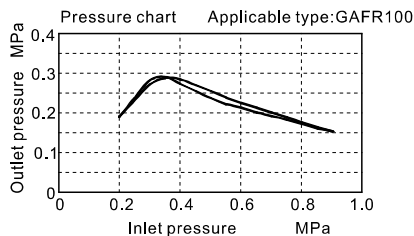
① ② ③ ④ ⑤ ⑥ ⑦ ⑧ ⑨ ⑩

① Model	② Bowl material	③ Port size	④ Drain type	⑤ Type code	⑥ Accessories	⑦ Pressure gauge	⑧ Filtering grade	⑨ Thread type [Note2]	⑩ Code of reflux valve
GAFR100:GA100 Series Filter & regulator	Blank : PC	M5: M5 06: 1/8"	Blank: Semi-auto drain +Manual drain	S: Standard L: Lower pressure [Note1]	Blank: Bracket J: No bracket	Blank: Circular N: No gauge	Blank: 40µm W: 5µm	Blank: PT (MPa/psi) G: G (bar/MPa) T: NPT (psi/bar)	Blank: Reflux valve is not available

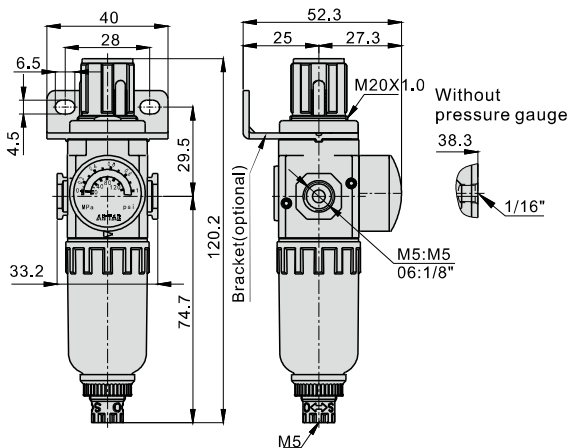
[Note1] The working pressure range of lower pressure type is 0.15~0.4MPa(20~58psi) ;

[Note 2] Thread type means connecting thread and scales of pressure gauge while port size is M5.

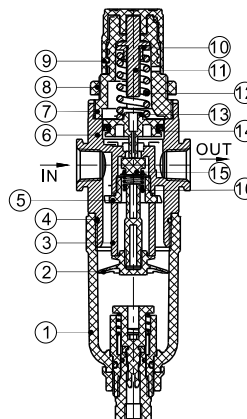
Pressure and Flow chart



Dimensions



Inner structure



No.	Item	Material
1	Drain bowl	PC
2	Umbrella baffle	POM
3	Filter core	HDPE
4	O-ring	NBR
5	Air guider	POM
6	Body	Aluminum alloy
7	Adjusting seat	POM
8	Fixation ring cap	POM
9	Pressure knob	POM
10	Spindle nut	Steel
11	Adjusting spindle	08A
12	Spring	Spring Steel
13	Piston	POM
14	Piston O-ring	NBR
15	Adjusting plug	NBR
16	Spring	Stainless steel



Preparation unit——GA Series

GAFR Series filter & regulator

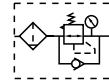


Symbol

No reflux valve is attached



Reflux valve is attached



Product feature

1. Circular square pressure gauge which with clip and magnifier is used to save installation space.
2. The pressed-in self-locking mechanism can prevent the abnormal movement of the set pressure caused by external interfere.
3. Balanced design is adopted for the pressure adjustment mechanism.
4. Unique diversion structure spins the air flowing through to effectively separate the liquid from the air and reliably filter the solid grain.
5. The filtering grade includes 5 μ m and 40 μ m (optional).
6. Two drain types are available: semi-auto drain and automatic drain.
7. Three material of bowl are available: PC, Nylon and metal.
8. The bracket can be selected for installation.

Specification

Model	GAFR200-06	GAFR200-08	GAFR300-08	GAFR300-10	GAFR300-15	GAFR400-10	GAFR400-15	GAFR500-20	GAFR600-20	GAFR600-25
Fluid	Air									
Port size [Note1]	1/8"	1/4"	1/4"	3/8"	1/2"	3/8"	1/2"	3/4"	3/4"	1"
Filtering grade	40 μ m or 5 μ m									
Pressure range	0.15~0.9MPa(20~130psi)									
Max. pressure	1.0MPa(145psi)									
Proof pressure	1.5MPa(215psi)									
Temperature range	-5~70°C(Unfreeze)									
Capacity of drain bowl	25CC			60CC		100CC		108CC	205CC	
Weight	290g			500g		880g		950g	1880g	

[Note1] PT thread, G thread and NPT thread are available.

Ordering code

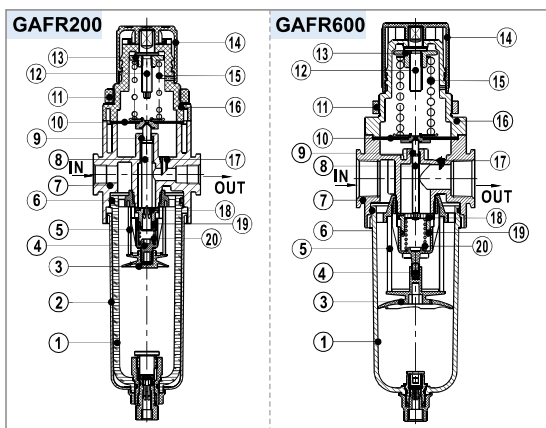
GAFR300 □ 10 □ S □ □ W G K

① ② ③ ④ ⑤ ⑥ ⑦ ⑧ ⑨ ⑩

① Model	② Bowl material	③ Port size	④ Drain type	⑤ Type code	⑥ Accessories	⑦ Pressure gauge	⑧ Filtering grade	⑨ Thread type	⑩ Code of reflux valve
GAFR200:GA200 Series Filter & regulator	Blank : PC bowl C: Metal bowl	06: 1/8" 08: 1/4"	Blank: Semi-auto drain +Manual drain A: Automatic drain	S: Standard L: Lower pressure [Note1]	Blank: Bracket J: No bracket	Blank: Circular N: No gauge [Note2]	Blank: 40 μ m W: 5 μ m	Blank: PT (MPa/psi) G: G (bar/MPa) T: NPT (psi/bar)	Blank: No reverse flow valve is attached K: Reverse flow valve is attached [Note2]
GAFR300:GA300 Series Filter & regulator		10: 3/8" 15: 1/2" 10: 3/8" 15: 1/2"							
GAFR400:GA400 Series Filter & regulator	N: Nylon bowl	20: 3/4"							
GAFR500:GA500 Series Filter & regulator									
GAFR600:GA600 Series Filter & regulator	C: Metal bowl	20: 3/4" 25: 1"		S: Standard					

[Note1] The work pressure of lower pressure type is 0.15~0.4MPa(20~58psi) ; [Note2] Please refer to page 246 for details of sealing plate Installation and reflux valve.

Inner structure



No.	Item	Material
1	Drain bowl	Aluminum alloy \ PC \ Nylon
2	Meter cover	SPCC
3	Umbrella baffle	High viscosity POM
4	Air guider	High viscosity POM
5	Filter core	HDPE
6	O-ring	NBR
7	Body of filter-regulator	Aluminum alloy
8	Adjusting spool	Brass(GAFR600)\POM(others)
9	O-ring	NBR
10	Diaphragm	NBR
11	Fixation ring cap	Aluminum alloy (GAFR600)\POM(others)
12	Adjusting spindle	08A
13	Regulator nut	Steel
14	Pressure knob	POM
15	Spring	SWPB
16	Adjusting seat	Aluminum alloy (GAFR600)\POM(others)
17	Feedback tube	POM
18	Adjusting plug	Brass & Rubber
19	O-ring	NBR
20	Spring	SWPB

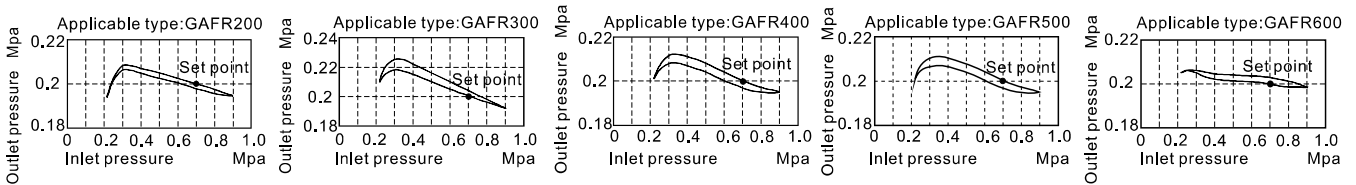


Preparation unit—GA Series

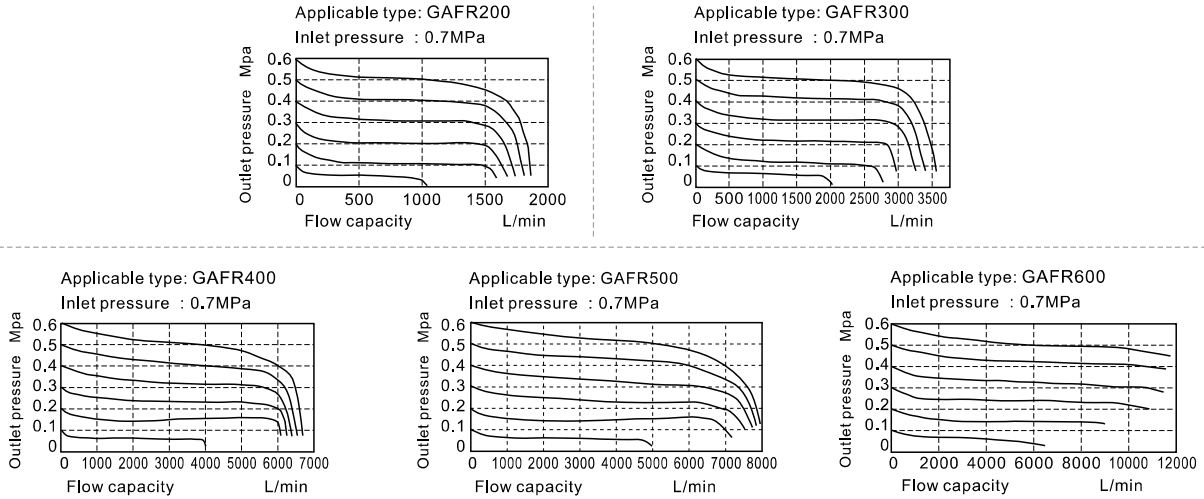


GAFR Series filter & regulator

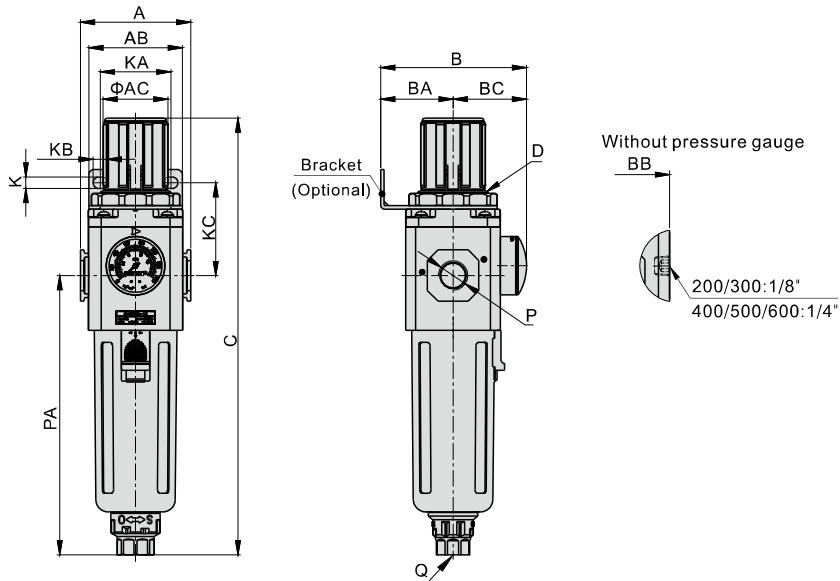
Pressure chart



Flow chart



Dimensions



Model/Item	A	AB	AC	B	BA	BB	BC	C	D	K	KA	KB	KC	P	PA	Q
GAFR200-06	52.5	55	31	69	30	51.5	39	192.5	M33x1.5	5.4	34	15.4	52	1/8"	120	M5X0.8
GAFR200-08	52.5	55	31	69	30	51.5	39	192.5	M33x1.5	5.4	34	15.4	52	1/4"	120	M5X0.8
GAFR300-08	62.5	53	38	82.5	41	67.5	41.5	247	M40x1.5	6.5	40	8	52.5	1/4"	158	G1/4
GAFR300-10	62.5	53	38	82.5	41	67.5	41.5	247	M40x1.5	6.5	40	8	52.5	3/8"	158	G1/4
GAFR300-15	62.5	53	38	82.5	41	67.5	41.5	247	M40x1.5	6.5	40	8	52.5	1/2"	158	G1/4
GAFR400-10	80	72	52	99	50	84	49	285.5	M55x2.0	8.5	55	11	57	3/8"	177.5	G1/4
GAFR400-15	80	72	52	99	50	84	49	285.5	M55x2.0	8.5	55	11	57	1/2"	177.5	G1/4
GAFR500-20	82	72	52	100	50	85	50	299.5	M55x2.0	8.5	55	11	57	3/4"	191.5	G1/4
GAFR600-20	100	90	59	128	70	113	58	336.5	M62x1.5	11	66	13	76	3/4"	205	G1/4
GAFR600-25	100	90	59	128	70	113	58	336.5	M62x1.5	11	66	13	76	1"	205	G1/4



Preparation unit——GA Series

GAF100 Series Filter



Symbol



Specification

Model	GAF100M5	GAF10006
Fluid	Air	
Port size [Note1]	M5	1/8"
Filtering grade	40μm or 5μm	
Pressure range	0.15~0.9MPa(20~130psi)	
Max. pressure	1.0MPa(145psi)	
Proof pressure	1.5MPa(215psi)	
Temperature range	-5~70°C(Unfreeze)	
Capacity of drain bowl	6CC	
Weight	55g	

[Note1] PT thread, G thread and NPT thread are available.

Ordering code

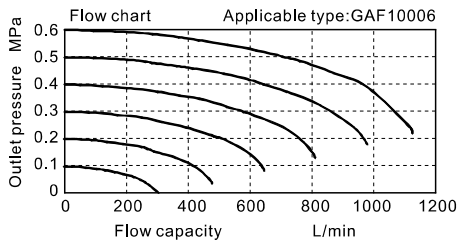
GAF100 □ 06 □ J W G

① ② ③ ④ ⑤ ⑥ ⑦

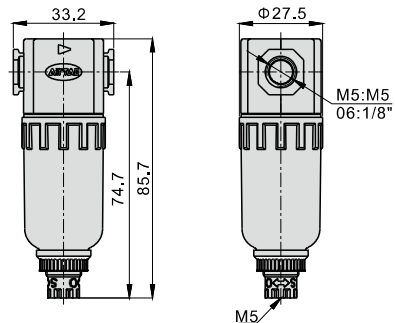
① Model	② Bowl material	③ Port size	④ Drain type	⑤ Accessories	⑥ Filtering grade	⑦ Thread type[Note1]
GAF100:GA100 Series Filter	Blank : PC	M5: M5 06: 1/8	Blank: Semi-auto drain +Manual drain	J: No bracket	Blank: 40μm W: 5μm	Blank: PT G: G T: NPT

[Note 1] Standard M5 thread is blank here.

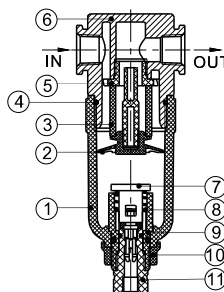
Flow chart



Dimensions



Inner structure



No.	Item	Material
1	Drain bowl	PC
2	Umbrella baffle	POM
3	Filter core	HDPE
4	O-ring	NBR
5	Air guider	POM
6	Body	Aluminum alloy
7	Piston	POM
8	Spring	Stainless steel
9	Fixed baffle	POM
10	Fixing nut	POM
11	Drain cock	POM



Preparation unit——GA Series



GAF Series Filter



Symbol



Product feature

1. Unique diversion structure spins the air flowing through to effectively separate the liquid from the air and reliably filter the solid grain.
2. It has low pressure loss, high efficiency in separating water and large drain bowl capacity.
3. Filtering grade includes 5μm and 40μm (Optional).
4. Three drain types are available: manual drain, semi-auto drain and automatic drain.
5. Two drain types are available: semi-auto drain and automatic drain.
6. Three material of bowl are available: PC, Nylon and metal.
7. The bracket can be selected for installation.

Specification

Model	GAF200-06	GAF200-08	GAF300-08	GAF300-10	GAF300-15	GAF400-10	GAF400-15	GAF500-20	GAF600-20	GAF600-25
Fluid	Air									
Port size [Note1]	1/8"	1/4"	1/4"	3/8"	1/2"	3/8"	1/2"	3/4"	3/4"	1"
Filtering grade	40μm or 5μm									
Pressure range	0.15~0.9MPa(20~130psi)									
Proof pressure	1.5MPa(215psi)									
Temperature range	-5~70°C(Unfreeze)									
Capacity of drain bowl	25CC		60CC			100CC		108CC	205CC	
Weight	200g		360g			640g		680g	1040g	

[Note1] PT thread, G thread and NPT thread are available.

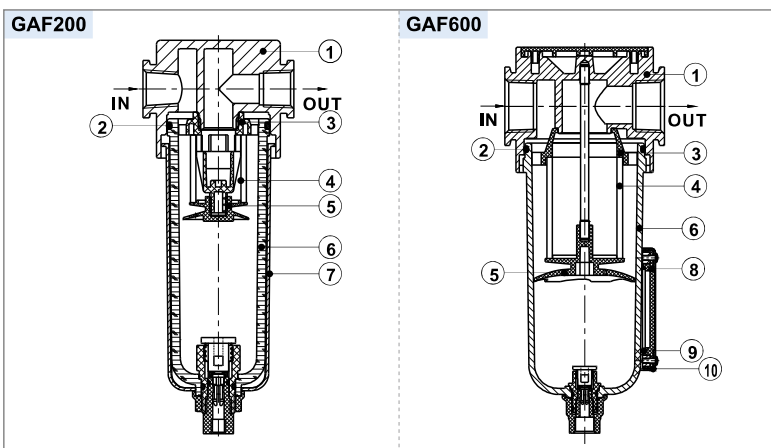
Ordering code

GAF 300 □ 10 □ □ W G

① ② ③ ④ ⑤ ⑥ ⑦

① Model	② Bowl material	③ Port size	④ Drain type	⑤ Accessories	⑥ Filtering grade	⑦ Thread type
GAF200:GA200 Series Filter	Blank : PC bowl C: Metal bowl N: Nylon bowl	06: 1/8" 08: 1/4"	Blank: Semi-auto drain +Manual drain A: Automatic drain	Blank: Bracket J: No bracket	Blank: 40μm W: 5μm	Blank: PT G: G T: NPT
GAF300:GA300 Series Filter		08: 1/4" 10: 3/8" 15: 1/2"				
GAF400:GA400 Series Filter		10: 3/8" 15: 1/2"				
GAF500:GA500 Series Filter		20: 3/4"				
GAF600:GA600 Series Filter	C: Metal bowl	20: 3/4" 25: 1"				

Inner structure



No.	Item	Material
1	Body	Aluminum alloy
2	O-ring	NBR
3	Air guide	High viscosity POM
4	Filter core	HDPE
5	Umbrella baffle	High viscosity POM
6	Drain bowl	Aluminum alloy\PC\Nylon
7	Meter cover	SPCC
8	Liquid meter inside cover	PC
9	Liquid meter seal	NBR
10	Liquid meter cover	SPCC

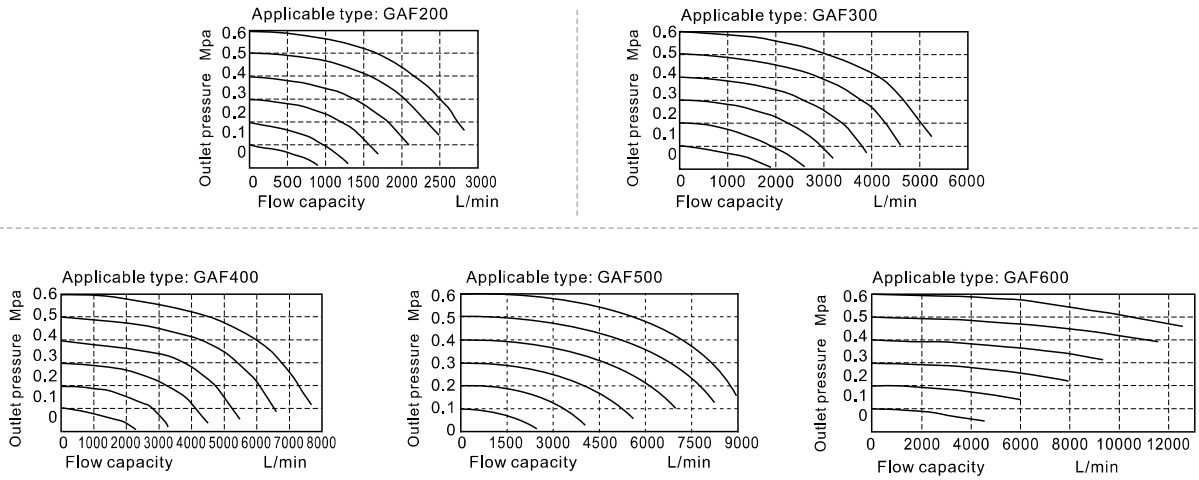


Preparation unit——GA Series

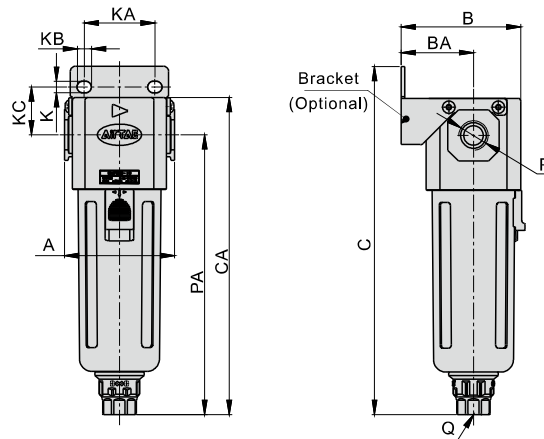


GAF Series Filter

Flow chart



Dimensions



Model/Item	A	B	BA	C	CA	K	KA	KB	KC	P	PA	Q
GAF200-06	52.5	54.5	33	150	137	5.4	27	8.4	23	1/8"	120	M5X0.8
GAF200-08	52.5	54.5	33	150	137	5.4	27	8.4	23	1/4"	120	M5X0.8
GAF300-08	62.5	67.5	41	197	179	6.5	40	8	27	1/4"	158	G1/4
GAF300-10	62.5	67.5	41	197	179	6.5	40	8	27	3/8"	158	G1/4
GAF300-15	62.5	67.5	41	197	179	6.5	40	8	27	1/2"	158	G1/4
GAF400-10	80	84	50	220	202.5	8.5	55	11	33.5	3/8"	177.5	G1/4
GAF400-15	80	84	50	220	202.5	8.5	55	11	33.5	1/2"	177.5	G1/4
GAF500-20	82	85	50	234	216.5	8.5	55	11	33.5	3/4"	191.5	G1/4
GAF600-20	100	113	70	266	242	11	66	13	50	3/4"	205	G1/4
GAF600-25	100	113	70	266	242	11	66	13	50	1"	205	G1/4



Preparation unit——GA Series

GAR100 Series Regulator



Symbol

Reflux valve option is not available



Specification

Model	GAR100M5	GAR10006
Fluid	Air	
Port size [Note1]	M5	1/8"
Pressure range	0.05~0.9MPa(7~130psi)	
Max. pressure	1.0MPa(145psi)	
Proof pressure	1.5MPa(215psi)	
Temperature range	-5~70°C(Unfreeze)	
Weight	59g	

[Note1] PT thread, G thread and NPT thread are available.

Ordering code

GAR100 06 S □ □ G □

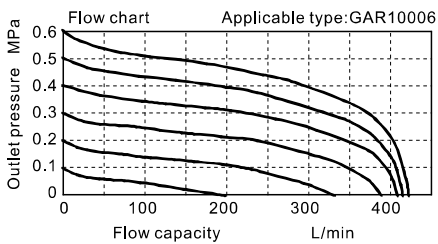
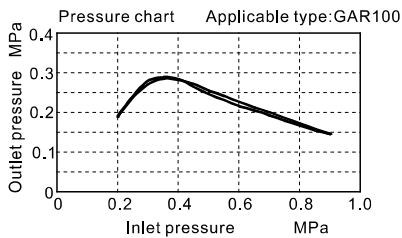
① ② ③ ④ ⑤ ⑥ ⑦

① Model	② Port size	③ Type code	④ Accessories	⑤ Pressure gauge	⑥ Thread type[Note2]	⑦ Code of reflux valve
GAR100:GA100 Series regulator	M5: M5 06: 1/8	S: Standard L: Lower pressure [Note1]	Blank: Bracket J: No bracket	Blank: Circular N: No gauge	Blank: PT (MPa/psi) G: G (bar/MPa) T: NPT (psi/bar)	Blank: Reflux valve is not available

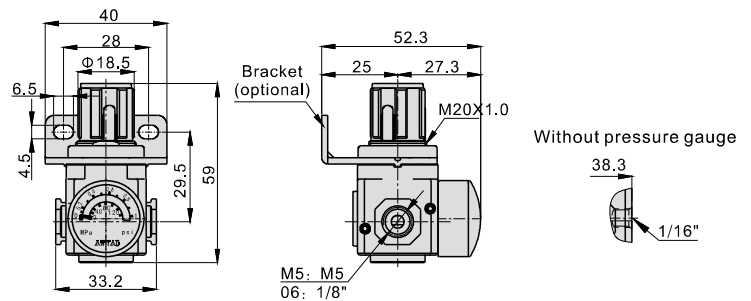
[Note1] The working pressure range of lower pressure type is 0.15~0.4MPa(20~58psi) ;

[Note 2] Thread type means connecting thread and scales of pressure gauge while port size is M5.

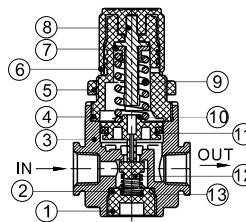
Pressure and Flow chart



Dimensions



Inner structure



No.	Item	Material
1	Valve cap	POM
2	O-ring	NBR
3	Body	Aluminum alloy
4	Adjusting seat	POM
5	Fixed ring	POM
6	Pressure knob	POM
7	Spindle nut	Steel
8	Adjusting spindle	08A
9	Spring	Spring Steel
10	Piston	POM
11	Piston O-ring	NBR
12	Pressure plug	NBR
13	Spring	Stainless steel



Preparation unit——GA Series



GAR Series Regulator



Symbol

No reflux valve is attached



Reflux valve is attached



Product feature

1. Circular square pressure gauge which with clip and magnifier is used to save installation space.
2. The pressed-in self-locking mechanism can prevent the abnormal movement of the set pressure caused by external interfere.
3. Balanced design is adopted for the pressure adjustment mechanism.
4. In addition to panel installation, the bracket is optional for installation.

Specification

Model	GAR200-06	GAR200-08	GAR300-08	GAR300-10	GAR300-15	GAR400-10	GAR400-15	GAR500-20	GAR600-20	GAR600-25
Fluid	Air									
Port size [Note1]	1/8"	1/4"	1/4"	3/8"	1/2"	3/8"	1/2"	3/4"	3/4"	1"
Pressure range	0.05~0.9MPa(7~130psi)									
Max. pressure	1.0MPa(145psi)									
Proof pressure	1.5MPa(215psi)									
Temperature range	-20~70°C									
Weight	170g		300g			570g		580g		1390g

[Note1] PT thread, G thread and NPT thread are available.

Ordering code

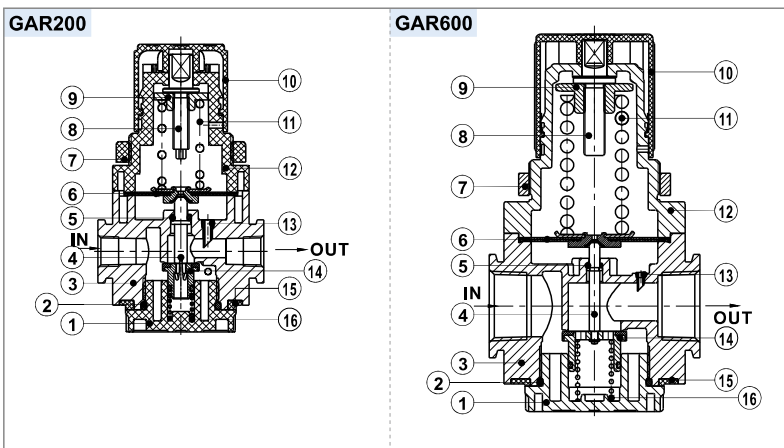
GAR300 10 S □ □ G K

① ② ③ ④ ⑤ ⑥ ⑦

① Model	② Port size	③ Type code	④ Accessories	⑤ Pressure gauge	⑥ Thread type	⑦ Code of reflux valve
GAR200:GA200 Series regulator	06: 1/8" 08: 1/4"	S: Standard L: Lower pressure [Note1]	Blank: Bracket J: No bracket	Blank: Circular N: No gauge [Note2]	Blank: PT (MPa/psi) G: G (bar/MPa) T: NPT (psi/bar)	Blank: No reverse flow valve is attached K: Reverse flow valve is attached [Note2]
GAR300:GA300 Series regulator	08: 1/4" 10: 3/8" 15: 1/2"					
GAR400:GA400 Series regulator	10: 3/8" 15: 1/2"					
GAR500:GA500 Series regulator	20: 3/4"	S: Standard				
GAR600:GA600 Series regulator	20: 3/4" 25: 1"					

[Note1] The work pressure of lower pressure type is 0.05~0.4MPa(7~58psi) ; [Note2] Please refer to page 246 for details of sealing plate Installation and reflux valve.

Inner structure



No.	Item	Material
1	Valve cap	Aluminum alloy(GR600)\POM(others)
2	O-ring	NBR
3	Body	Aluminum alloy
4	Spool	Brass(GR600)\POM(others)
5	O-ring	NBR
6	Diaphragm	NBR
7	Fixed ring	Aluminum alloy (GR600)\POM(others)
8	Adjusting spindle	08A
9	Regulator nut	Steel
10	Pressure knob	POM
11	Pressure spring	SWPB
12	Adjusting seat	Aluminum alloy (GR600)\POM(others)
13	Feed back tube	POM
14	Pressure plug	Aluminum alloy & steel
15	Bottom cover	POM
16	Spring	SWPB

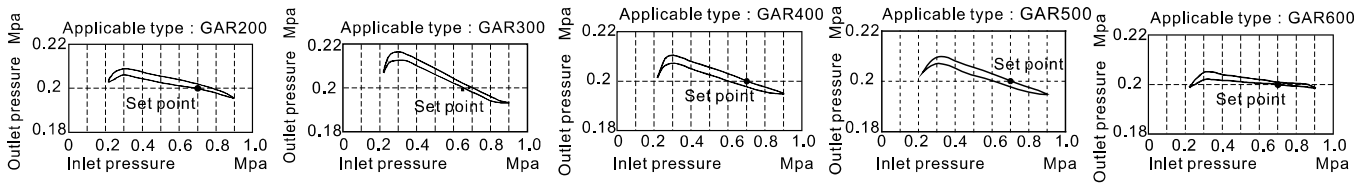


Preparation unit—GA Series

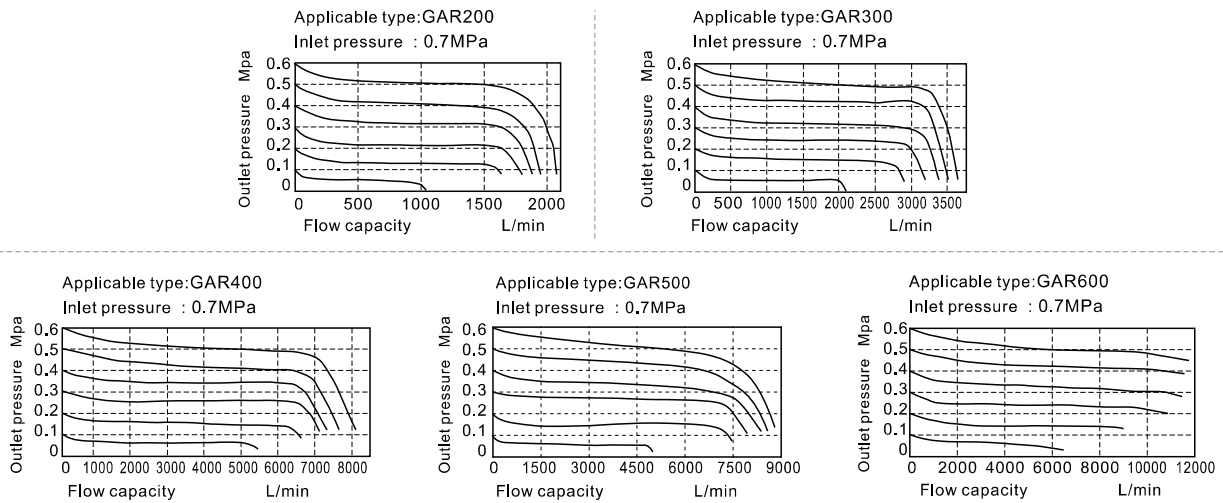


GAR Series Regulator

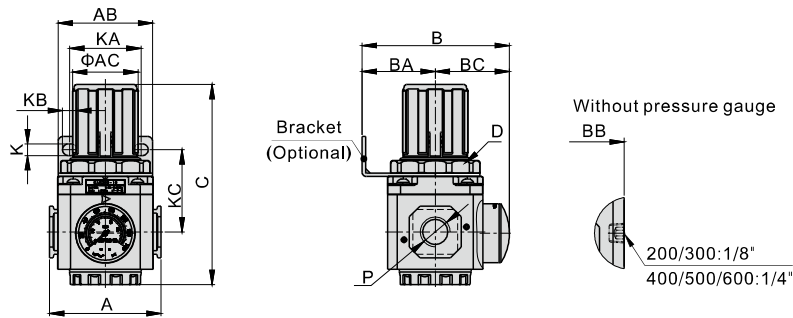
Pressure chart



Flow chart



Dimensions



Model\Item	A	AB	AC	B	BA	BB	BC	C	D	K	KA	KB	KC	P
GAR200-06	52,5	55	31	69	30	51,5	39	91	M33x1,5	5,4	34	15,4	45	1/8"
GAR200-08	52,5	55	31	69	30	51,5	39	91	M33x1,5	5,4	34	15,4	45	1/4"
GAR300-08	62,5	53	38	82,5	41	67,5	41,5	112	M40x1,5	6,5	40	8	46	1/4"
GAR300-10	62,5	53	38	82,5	41	67,5	41,5	112	M40x1,5	6,5	40	8	46	3/8"
GAR300-15	62,5	53	38	82,5	41	67,5	41,5	112	M40x1,5	6,5	40	8	46	1/2"
GAR400-10	80	72	52	99	50	84	49	140,5	M55x2,0	8,5	55	11	53	3/8"
GAR400-15	80	72	52	99	50	84	49	140,5	M55x2,0	8,5	55	11	53	1/2"
GAR500-20	82	72	52	100	50	85	50	140,5	M55x2,0	8,5	55	11	53	3/4"
GAR600-20	100	90	59	128	70	113	58	179,5	M62x1,5	11	66	13	73,5	3/4"
GAR600-25	100	90	59	128	70	113	58	179,5	M62x1,5	11	66	13	73,5	1"



Preparation unit——GA Series



GAL100 Series Lubricator



Symbol



Specification

Model	GAL100M5	GAL10006
Fluid	Air	
Port size [Note1]	M5	1/8"
Pressure range	0.05~0.9MPa(7~130psi)	
Proof pressure	1.5MPa(215psi)	
Temperature range	-5~70°C(Unfreeze)	
Recommended lubricant	ISO VG 32 or equivalent	
Capacity of oil bowl	9CC	
Weight	59g	

[Note1] PT thread, G thread and NPT thread are available.

Ordering code

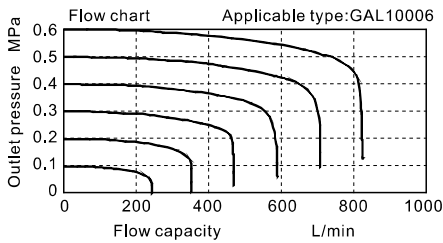
GAL100 □ 06 J G

① ② ③ ④ ⑤

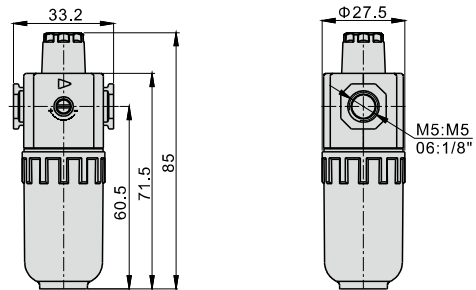
①Model	②Bowl material	③Port size	④Accessories	⑤Thread type[Note1]
GAL100: GA100 Lubricator	Blank : PC	M5: M5 06: 1/8	J : No bracket	Blank: PT G: G T: NPT

[Note 1] Standard M5 thread is blank here.

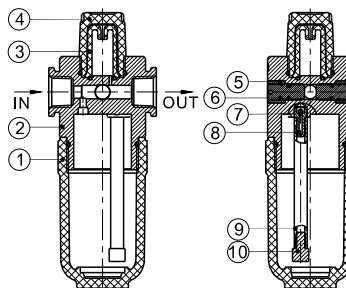
Flow chart



Dimensions



Inner structure



No.	Item	Material
1	Oil bowl	PC
2	Body	Aluminum alloy
3	Drip pipe	PC
4	Sight window	PC
5	Adjusting screw	Brass
6	Fixing nut	Aluminum alloy
7	Steel ball	Stainless steel
8	Tube nozzle	Aluminum alloy
9	Tube	PU
10	Lubricant filter	Sintered bronze



Preparation unit——GA Series



GAL Series Lubricator



Symbol



Product feature

1. The structure of oil dripping adopts gap seal type, which makes the adjustment of oil supply more reliable.
2. Oil feed ring can only make one full turn. The quantity of oil supply basically takes on linear distribution. The quantity of oil supply can be generally calculated according to the position of graduation ring.
3. Special drip nozzle structure will produce negative pressure in oil dripping outlet and the mist flow is minimal.
4. Three material of bowl are available: PC, Nylon and metal.
5. Filling of oil while the lubricator is under pressure is made possible, and the oil bowl is large.
6. The bracket can be selected for installation.

Specification

Model	GAL200-06	GAL200-08	GAL300-08	GAL300-10	GAL300-15	GAL400-10	GAL400-15	GAL500-20	GAL600-20	GAL600-25
Fluid	Air									
Port size [Note1]	1/8"	1/4"	1/4"	3/8"	1/2"	3/8"	1/2"	3/4"	3/4"	1"
Pressure range	0.05~0.9MPa(7~130psi)									
Proof pressure	1.5MPa(215psi)									
Temperature range	-5~70°C(Unfreeze)									
Recommended lubricant	ISO VG 32 or equivalent									
Capacity of oil bowl	36CC		98CC			185CC		225CC	410CC	
Weight	200g		370g			660g		700g	1040g	

[Note1] PT thread, G thread and NPT thread are available.

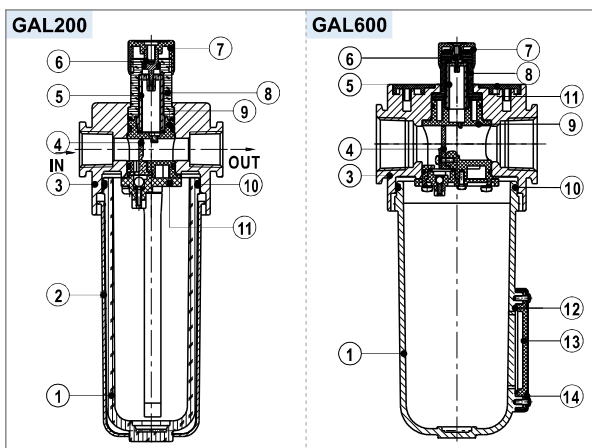
Ordering code

GAL300 □ 10 □ G

① ② ③ ④ ⑤

① Model	② Bowl material	③ Port size	④ Accessories	⑤ Thread type
GAL200: GA200 Series Lubricator	Blank : PC bowl C: Metal bowl N: Nylon bowl	06: 1/8" 08: 1/4"	Blank : Bracket J : No bracket	Blank: PT G: G T: NPT
GAL300: GA300 Series Lubricator		08: 1/4" 10: 3/8" 15: 1/2"		
GAL400: GA400 Series Lubricator		10: 3/8" 15: 1/2"		
GAL500: GA500 Series Lubricator		20: 3/4"		
GAL600: GA600 Series Lubricator		20: 3/4" 25: 1"		

Inner structure



No.	Item	Material
1	Oil bowl	Aluminum alloy \ PC \ Nylon
2	Meter cover	SPCC
3	Body of lubricator	Aluminum alloy
4	Distance block	PU
5	Drip pipe	PC
6	Ejector pin	Brass
7	Adjusting ring	POM
8	Adjusting looker	PC
9	Sprayer body	POM
10	O-ring	NBR
11	Sprayer bottom cap	POM
12	Liquid meter seal	NBR
13	Liquid meter inside cover	PC
14	Liquid meter cover	SPCC

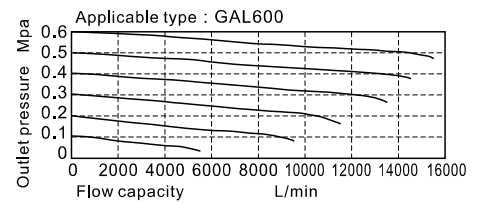
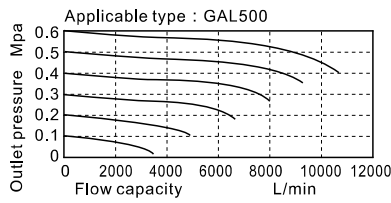
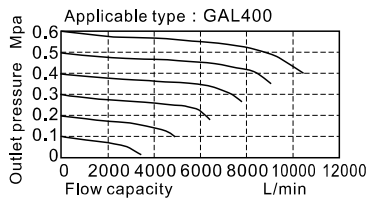
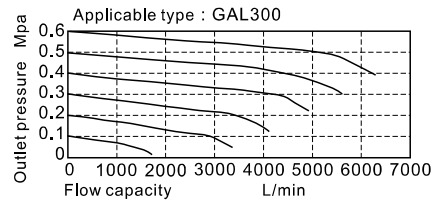
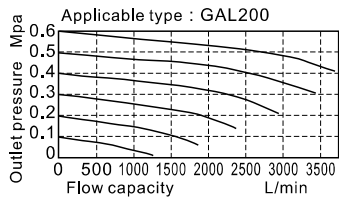


Preparation unit——GA Series

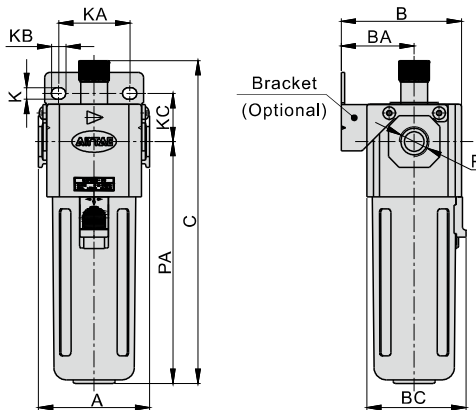


GAL Series Lubricator

Flow chart



Dimensions



Model\Item	A	B	BA	C	K	KA	KB	KC	P	PA
GAL200-06	52.5	54.5	33	146.5	5.4	27	8.4	23	1/8"	107
GAL200-08	52.5	54.5	33	146.5	5.4	27	8.4	23	1/4"	107
GAL300-08	62.5	67.5	41	181	6.5	40	8	27	1/4"	136
GAL300-10	62.5	67.5	41	181	6.5	40	8	27	3/8"	136
GAL300-15	62.5	67.5	41	181	6.5	40	8	27	1/2"	136
GAL400-10	80	84	50	204.5	8.5	55	11	33.5	3/8"	155
GAL400-15	80	84	50	204.5	8.5	55	11	33.5	1/2"	155
GAL500-20	82	85	50	218.5	8.5	55	11	33.5	3/4"	169
GAL600-20	100	113	70	246	11	66	13	50	3/4"	182.5
GAL600-25	100	113	70	246	11	66	13	50	1"	182.5



Preparation unit——GA Series



GA Series Reverse Flow valve



Product feature

1. This reverse flow valve can be used with GA series regulator but can not be ordered individually.
2. When it is used with GA series regulator, one only needs to change the seal board in the back of regulator for the reverse flow valve. It is convenient to install and won't change the external dimension of regulator.

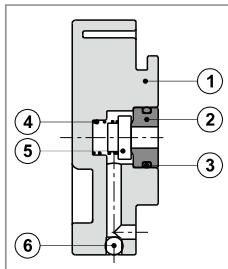
Applicable products

Reflux valve type	Applicable products's type	GA F.R.L Comtination	GA FR.L Comtination	GA Filter & regulator	GA Regulator
	GAR200-P1	GAC200	GAFC200	GAFR200	GAR200
	GAR300-P1	GAC300, 400, 500, 600	GAFC300, 400, 500, 600	GAFR300, 400, 500, 600	GAR300, 400, 500, 600

Ordering code

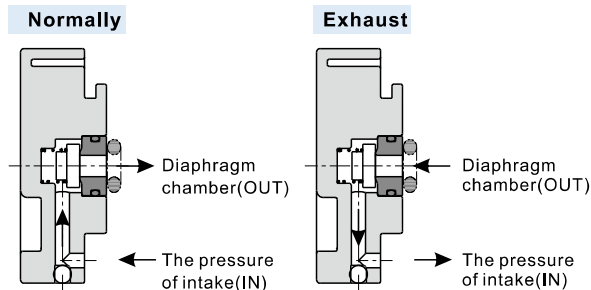
When GA series regulator is assembled with the reverse flow valve, the valve can be ordered together with the standard product. What needs to do is to add "-K" to the end of the ordering code of the standard product. Please refer to relevant content for more detailed order method.

Inner structure



No.	Item	Material
1	Reverse flow valve's body	POM
2	Plug	6061C-T6
3	O-ring	NBR
4	Spring	SUS304
5	Gasket	NBR
6	Steel ball	SUS304

Working principle

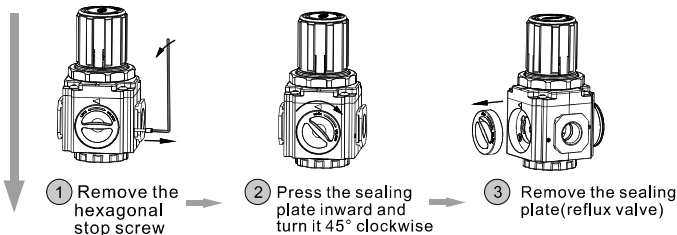


Normally, as the pressure of intake (IN) is higher than the set valve (pressure of outlet), the reverse flow valve closed; if the pressure of intake (IN) is cut off and starts exhaust, reverse flow valve opens. The pressure of diaphragm chamber is exhausted from IN orifice. At this moment, the pressure of diaphragm chamber decreases and the diaphragm is pressed down by the force from adjusting spring to open valve. The pressure from outlet is exhausted from IN port.

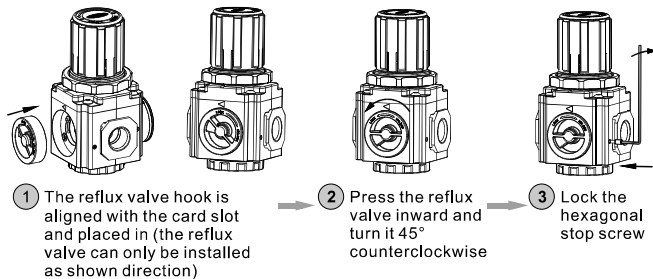
Example for assemble the reflux valve

1. Reflux valve installation steps:

a Disassembly sealing plate

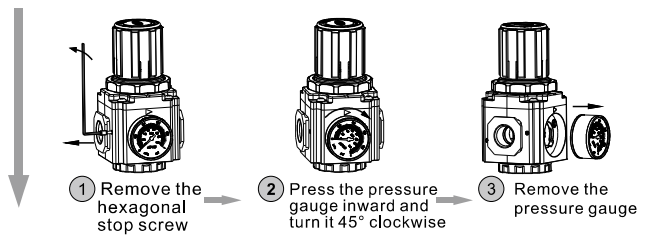


b Reflux valve installation



2. Gauge adapter (used when no pressure gauge is attached) Installation steps:

a Disassembly pressure gauge



b Gauge adapter installation

